

Barrie Simcoe Emergency Services Campus

Accessibility Review

Campus Facts

24 acre site

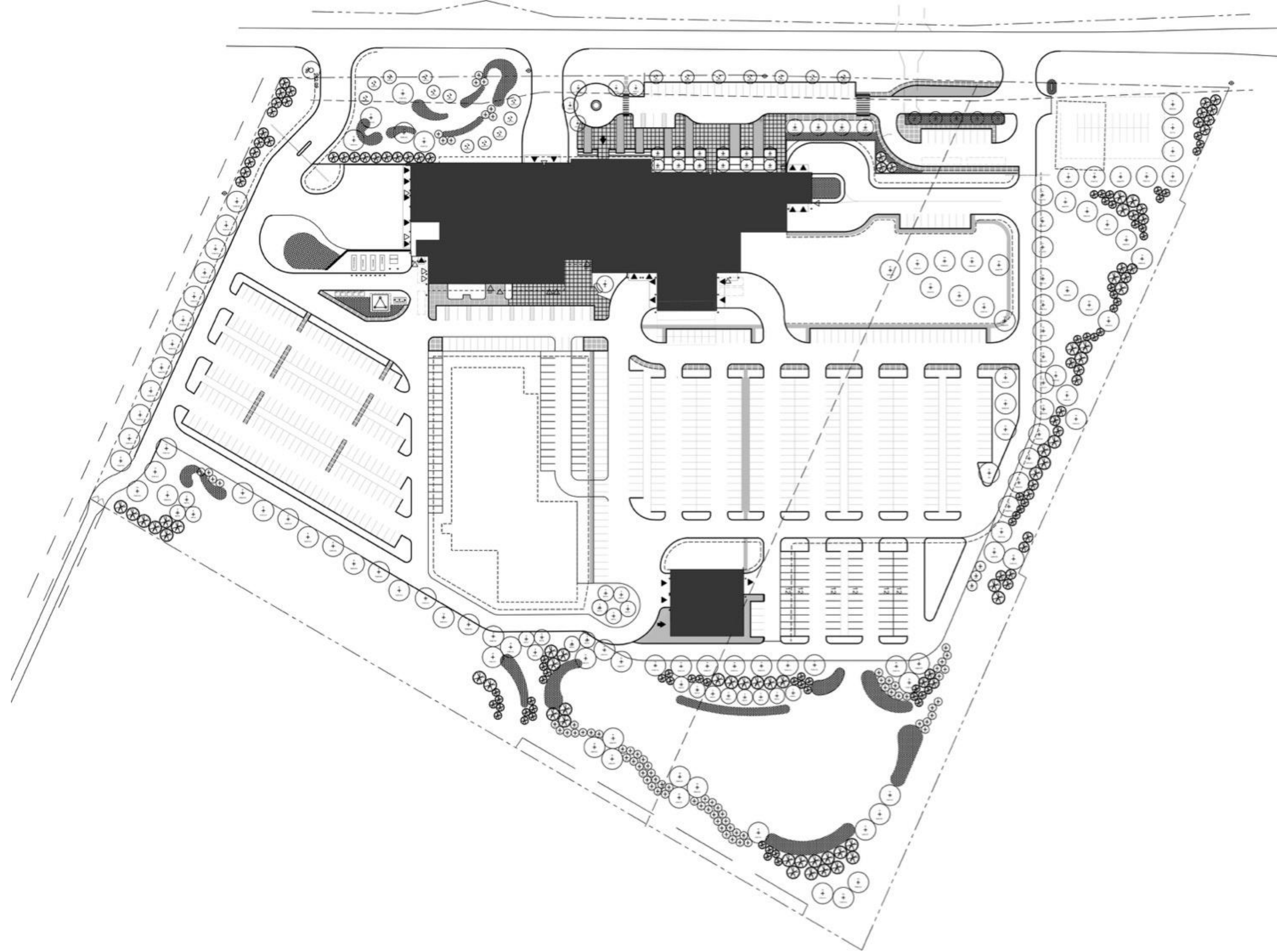
Two buildings - Police/Paramedics Headquarters with Fire dispatch/communications and a maintenance building

Headquarters is 184,500 sq. ft. on four levels.

Maintenance facility is 7,700 sq. ft.

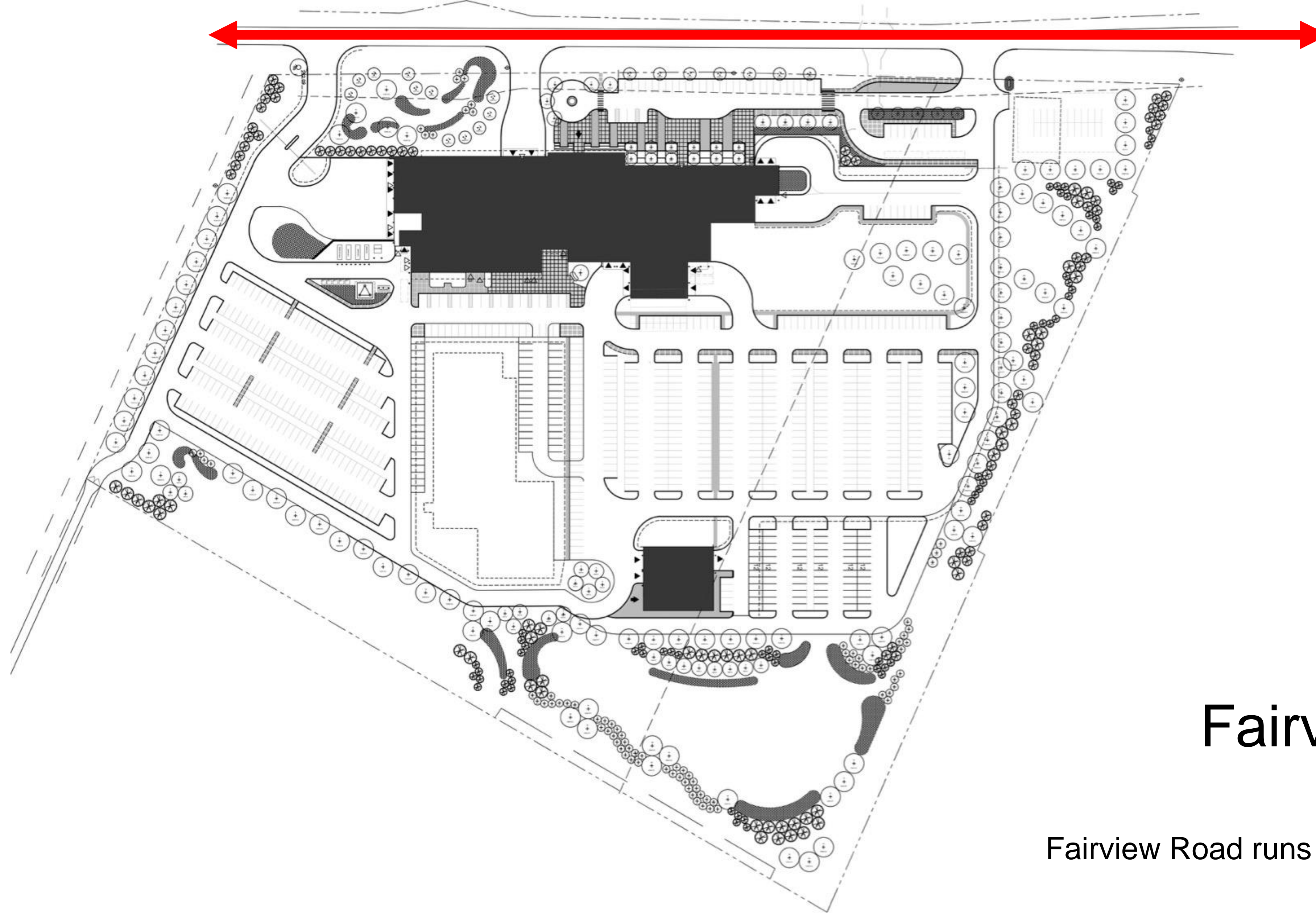
Access off Fairview Road

Parking for 601 cars – 561 Staff and 40 Visitors, 19 BF spaces
(van accessible and standard)



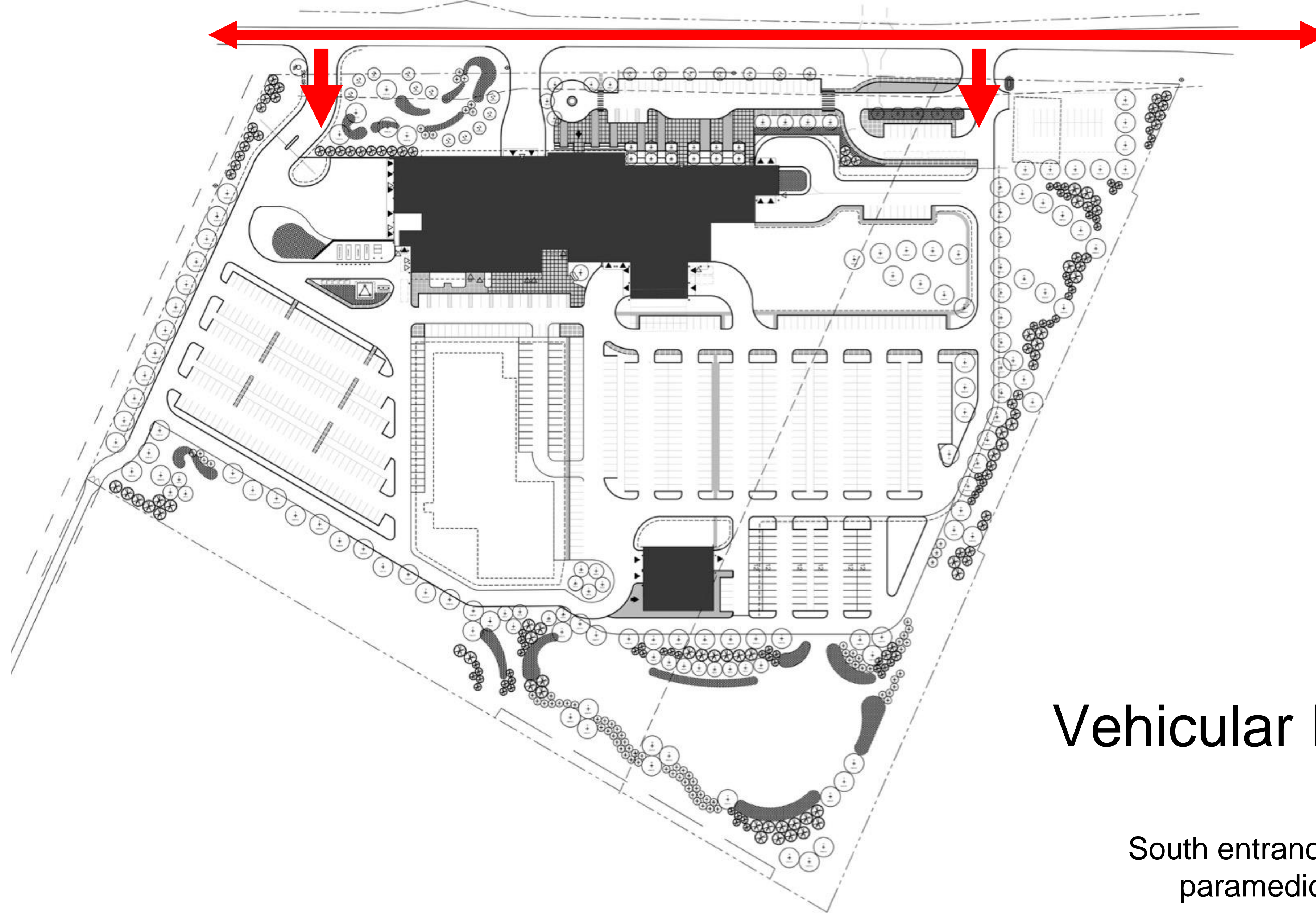
Site Plan

North is to the right.



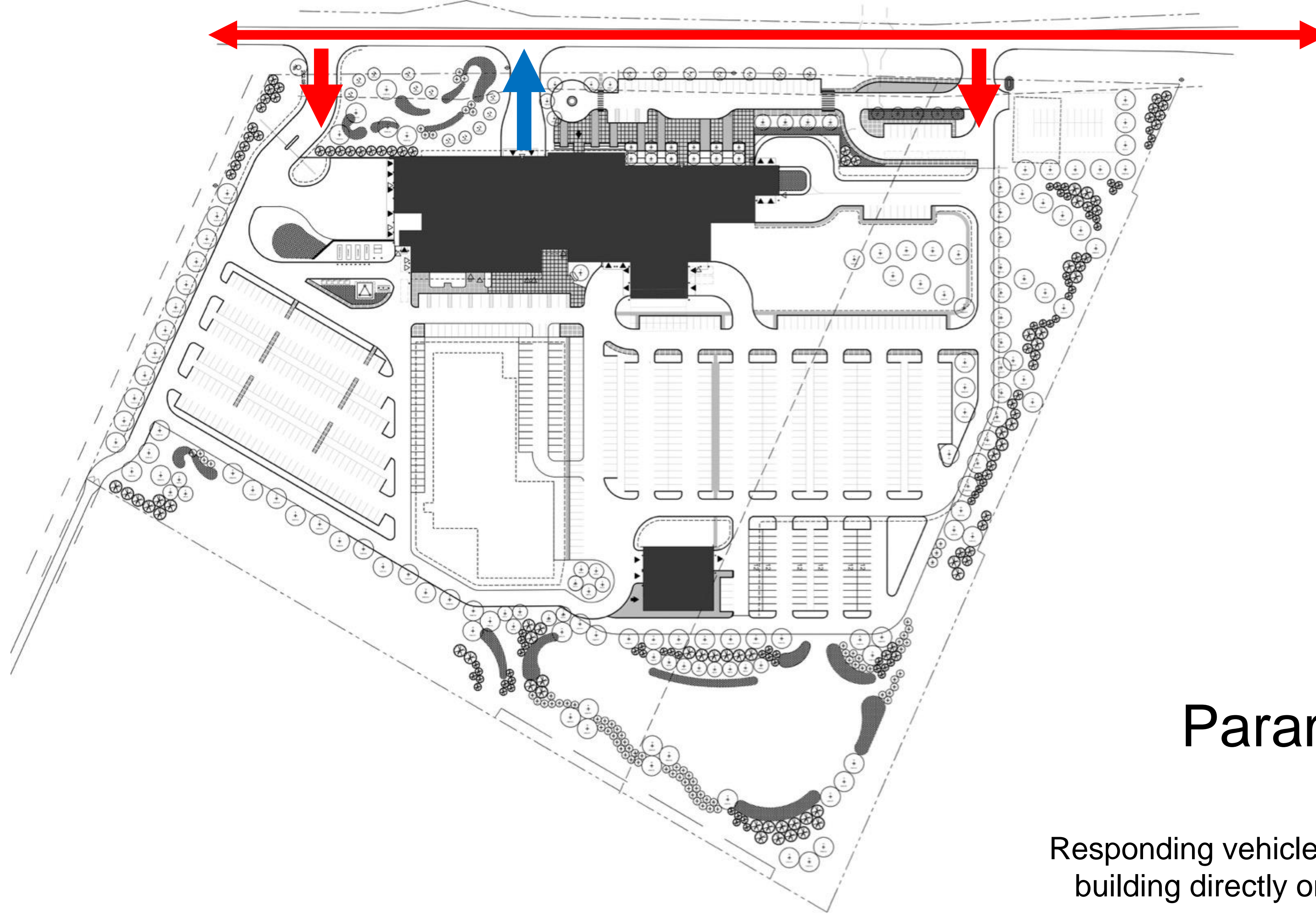
Fairview Road

Fairview Road runs North-South along the campus site.



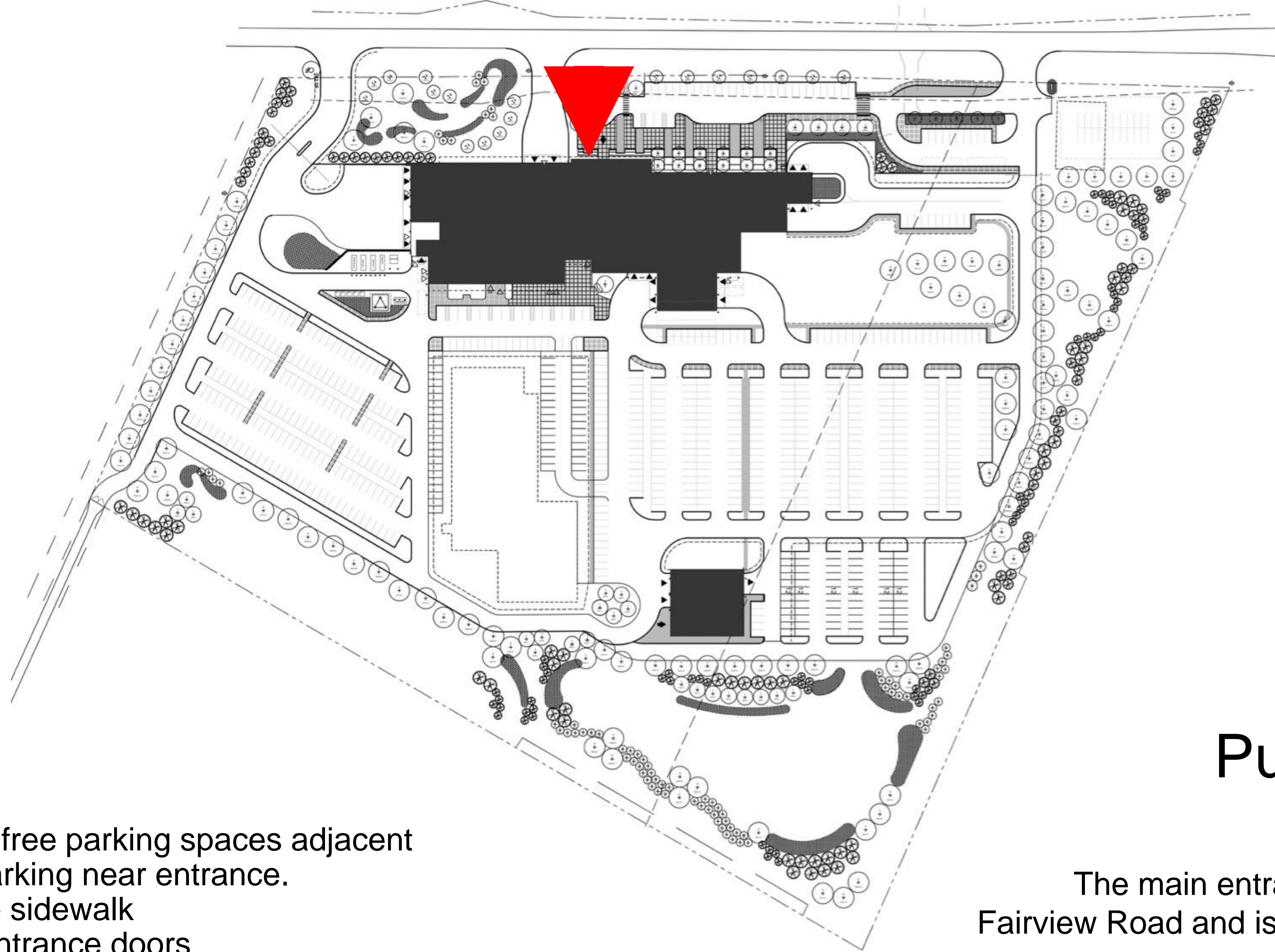
Vehicular Entrances

South entrance is for police, fire,
paramedic and staff vehicles



Paramedic Exit

Responding vehicles can exit from the building directly onto Fairview Road.

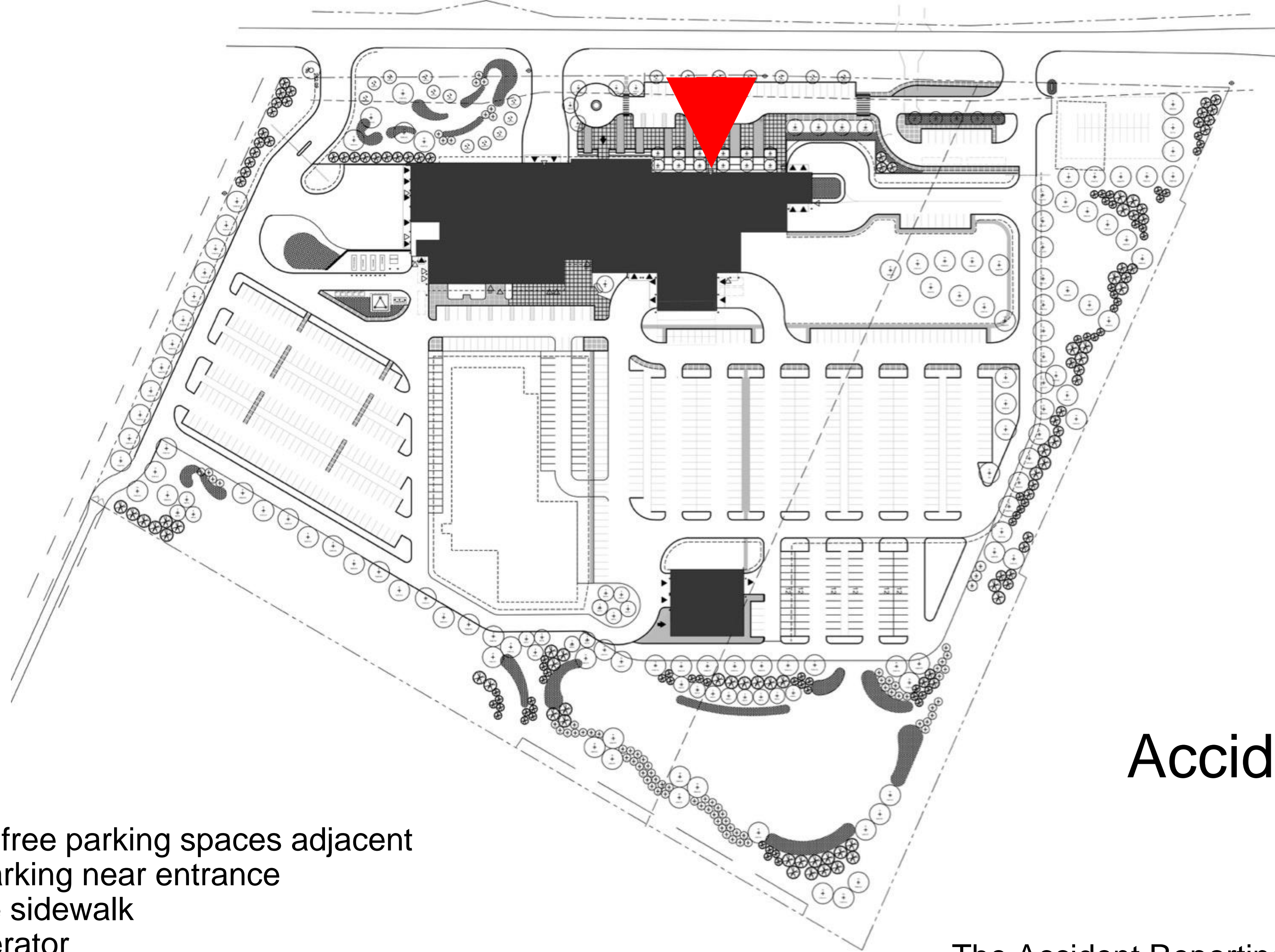


Facts:

- Drop-off
- 4 barrier-free parking spaces adjacent
- Public parking near entrance.
- Concrete sidewalk
- Sliding entrance doors
- Covered canopy

Public Entrance

The main entrance to the building faces Fairview Road and is defined by a canopy and signage.

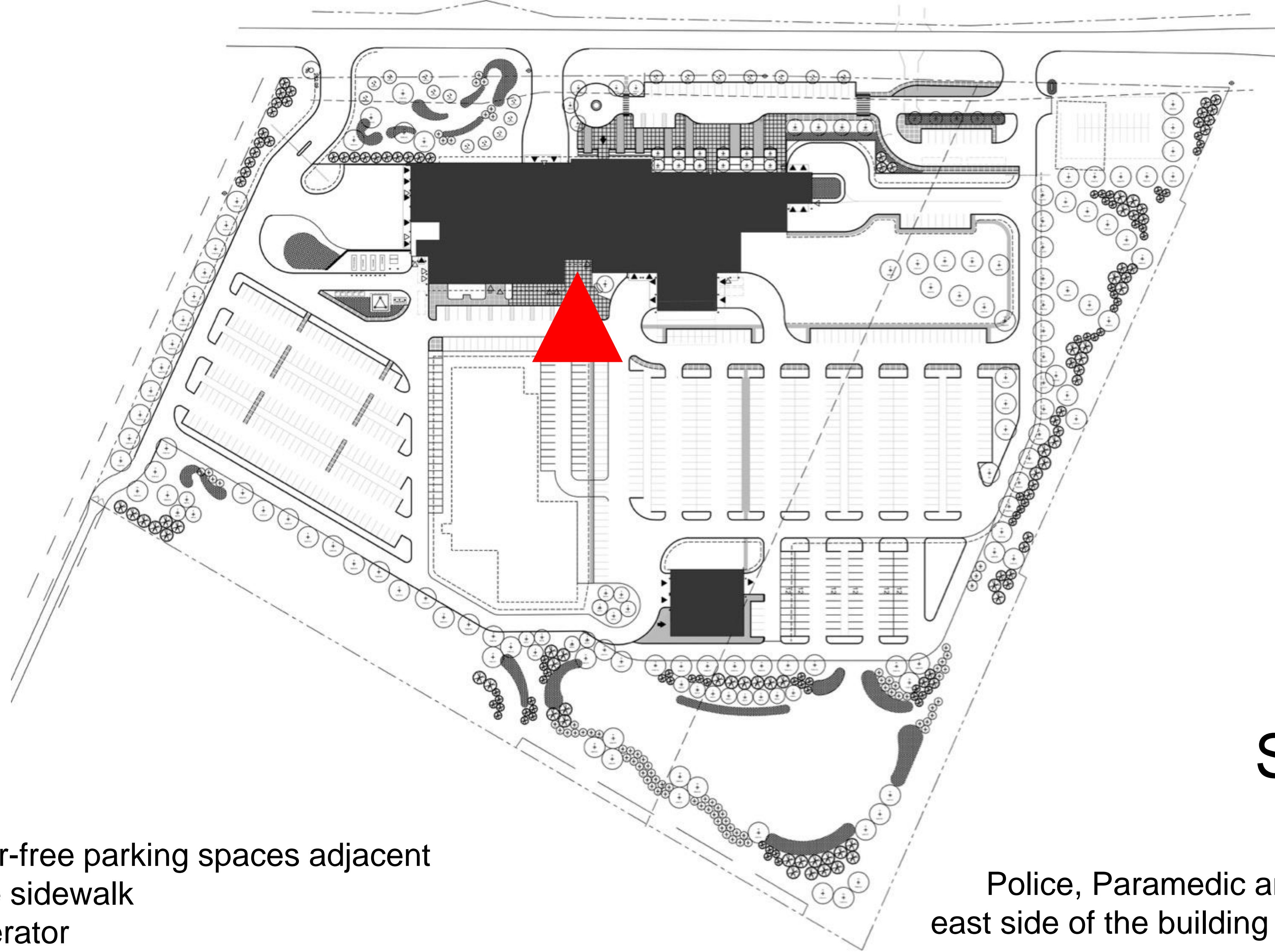


Facts:

- Drop-off
- 4 barrier-free parking spaces adjacent
- Public parking near entrance
- Concrete sidewalk
- Door operator
- Covered canopy

Accident Reporting Entrance

The Accident Reporting entrance faces Fairview Road and is defined by a canopy and signage.



Facts:

- Drop-off
- 15 barrier-free parking spaces adjacent
- Concrete sidewalk
- Door operator
- Covered canopy

Staff Entrance

Police, Paramedic and Fire entrance is on the east side of the building facing the secure parking area.

Equitable Use

Same accessible routes to the lobby and throughout the building.

All public spaces can be used by everyone.

All entrances throughout are accessible.

Reception designed to AODA standards.

All corridors are six feet wide.

Flexible, Simple Use

Two elevators adjacent to the main communication stair.

Daily user temperature control.

Classrooms, lunch room, meeting rooms all designed for flexibility.

Routes through the building are easily understood.

Key areas are visible and clearly marked.

Size and Space for Approach and Use

People using wheelchairs, scooters, walkers, and strollers can enter and exit easily.

There are clear lines of sight.

Controls can be reached and used by people with varied abilities.

There are multiple Universal Toilet Rooms throughout the building.

Water fountains are recessed so as not to protrude into corridors.



