

---

**TO:** GENERAL COMMITTEE

**SUBJECT:** SYDENHAM WELLS AND PENETANGUISHENE ROAD NO PARKING ANYTIME

**WARD:** 1

**PREPARED BY AND KEY CONTACT:** A. PURCELL, SENIOR TRANSPORTATION OPERATIONS TECHNOLOGIST, EXT. 4884

**SUBMITTED BY:** S. ROSE, C.E.T., TSOS, MANAGER OF TRAFFIC & ROWA SERVICES

**EXECUTIVE DIRECTOR APPROVAL:** M. BANFIELD, RPP, EXECUTIVE DIRECTOR OF DEVELOPMENT SERVICES

**CHIEF ADMINISTRATIVE OFFICER APPROVAL:** M. PROWSE, CHIEF ADMINISTRATIVE OFFICER

---

### **RECOMMENDED MOTION**

1. That Traffic By-Law 2020-107, Schedule '1', "No Parking Anytime" be amended by adding the following:

"Penetanguishene Road Both sides from Blake Street to Georgian Drive"

### **PURPOSE & BACKGROUND**

2. Staff have received motion 23-G-225 to investigate the feasibility of implementing "No Parking Anytime" on all or part of Sydenham Wells and on both sides of Penetanguishene Road from Georgian Drive to Blake Street.
3. Sydenham Wells is a two-lane local roadway with a pavement width of 8.5 metres and a sidewalk located on the south and east sides. Please refer to the area map in Appendix "A".
4. Penetanguishene Road is a two-lane arterial roadway with a pavement width of 7.5 metres. There are gravel shoulders along much of the road. Please refer to the area map in Appendix "C".
5. Currently, parking is permitted on both sides of Sydenham Wells and Penetanguishene Road. Overnight on-street parking prohibition is applied from December 1<sup>st</sup> to March 31<sup>st</sup> between 12:01 a.m. and 7:00 a.m. for winter maintenance activities.

### **ANALYSIS**

#### **Sydenham Wells**

6. Staff performed preliminary site investigations to understand the current parking and traffic operations on Sydenham Wells. Sydenham Wells was observed during the morning, afternoon and evening periods on consecutive days.
7. During the site investigation, staff observed most of the vehicles are parking on the north side of Sydenham Wells and through the corners. Parking in close proximity to the inside radius of corners

creates operational and safety concerns with reduced sight lines. Please refer to Appendix “B” for the site investigations results.

8. A questionnaire was prepared and mailed to 65 property owners on Sydenham Wells to seek input on the proposed parking restrictions. Staff received three (3) responses and the results of the questionnaire are as follows:

<b>SYDENHAM WELLS NO PARKING ANYTIME SURVEY</b>	<b>RESPONSES RECEIVED IN FAVOUR</b>	<b>PERCENTAGE OF RESPONSES</b>
<b>Option “A”</b> – Maintain current parking on both sides of Sydenham Wells.	0	0%
<b>Option “B”</b> – Implement the proposed parking restrictions on Sydenham Wells.	3	100%
<b>TOTAL (Out of 65)</b>	<b>3</b>	<b>5%</b>

9. A review of the survey responses identified a total response rate of 5%. From the three (3) total responses, all are in favour of implementing parking restrictions.
10. Residents expressed concerns regarding the number of vehicles parking on the road causing safety concerns for pedestrians and reducing the clearance to enter and exit driveways.
11. Traffic By-Law 2020-107, Section 4.2 permits the installation of the proposed “No Parking Anytime” restrictions to be implemented in the following locations without an amendment to Traffic Bylaw 2020-107:

No Parking Anytime:

- within 30 metres of any intersection or any through highway
- 15 metres before the point of curve and 15 metres past the point of tangent for curves with a radius less than 50 metres.

12. Based on site investigations, staff recommend implementing “No Parking Anytime” on the inside corners of Sydenham Wells and at the intersection of Sydenham Wells and Epsom Road in accordance with Traffic By-Law 2020-107, Section 4.2. Please refer to Appendix “A” for “No Parking Anytime” limits. The proposed restrictions are to improve sightline through the corners and at the intersection of Epsom Road and allow for maximum utilization of on-street parking.

**Penetanguishene Road**

13. Staff performed preliminary site investigations during the morning, afternoon and evening periods on consecutive days to understand the current parking and traffic operations on Penetanguishene Road.
14. During the site investigation, staff observed passenger vehicles and large commercial trucks parking on both sides of the gravel shoulders of Penetanguishene Road. Commercial vehicles have been observed parking along Penetanguishene Road over multiple days. Roads Operations staff have identified that vehicles parking on the gravel shoulders create increased road maintenance of the shoulder, deterioration and damage to the edge of asphalt and impedes winter maintenance operations. Please refer to Appendix “D” for the site investigations results.

15. A questionnaire was prepared and mailed to 19 property owners on Penetanguishene Road to seek input on the proposed parking restrictions. Staff received five (5) responses and the results of the questionnaire are as follows:

PENETANGUISHENE ROAD NO PARKING ANYTIME SURVEY	RESPONSES RECEIVED IN FAVOUR	PERCENTAGE OF RESPONSES
<b>Option "A"</b> – Maintain current parking on both sides of Penetanguishene Road.	1	20%
<b>Option "B"</b> – Implement the proposed parking restrictions on Penetanguishene Road.	4	80%
<b>TOTAL (Out of 19)</b>	<b>5</b>	<b>26%</b>

16. A review of the survey responses identified a total response rate of 21%. From the five (5) total responses, four (4) are in favour of implementing further restrictions and one (1) respondent was not in favour of implementing the restrictions. With the residents that responded in favour of this restriction, they indicate the need for the parking restrictions to be implemented for a safe operation of the road.
17. Staff recommend the installation of "No Parking Anytime" on both sides of Penetanguishene Road from Blake Street to Georgian Drive. The proposed restrictions will reduce the maintenance of the gravel shoulder and edge of asphalt which is damaged due to large commercial vehicles. Parked vehicles on the shoulder also creates operational concerns for winter operations staff.
18. Based on site investigations, staff recommends that Traffic By-Law 2020-107, Schedule '1', "No Parking Anytime" be amended by adding the following:

Penetanguishene Road Both sides from Blake Street to Georgian Drive"

**ENVIRONMENTAL AND CLIMATE CHANGE IMPACT MATTERS**

19. There are no environmental and/or climate change impact matters related to the recommendation.

**ALTERNATIVES**

20. The following alternatives are available for consideration by General Committee:

---

**Alternative #1**

General Committee could maintain the existing on-street parking on Sydenham Wells.

This alternative is not recommended as it has been identified by staff that there is a conflict with parked vehicles on Sydenham Wells and Penetanguishene Road. This is a safety concern for pedestrians and motorists as the observed parked vehicles create inadequate lane widths and could cause sight line restrictions for all road users.

**Alternative #2**

General Committee could maintain the existing on-street parking on Penetanguishene Road.

This alternative is not recommended as it has been identified by Roads Operations staff that vehicles parking on the gravel shoulders create increased road maintenance of the shoulder, deterioration and damage to the edge of asphalt and impedes winter maintenance operations.

**FINANCIAL**

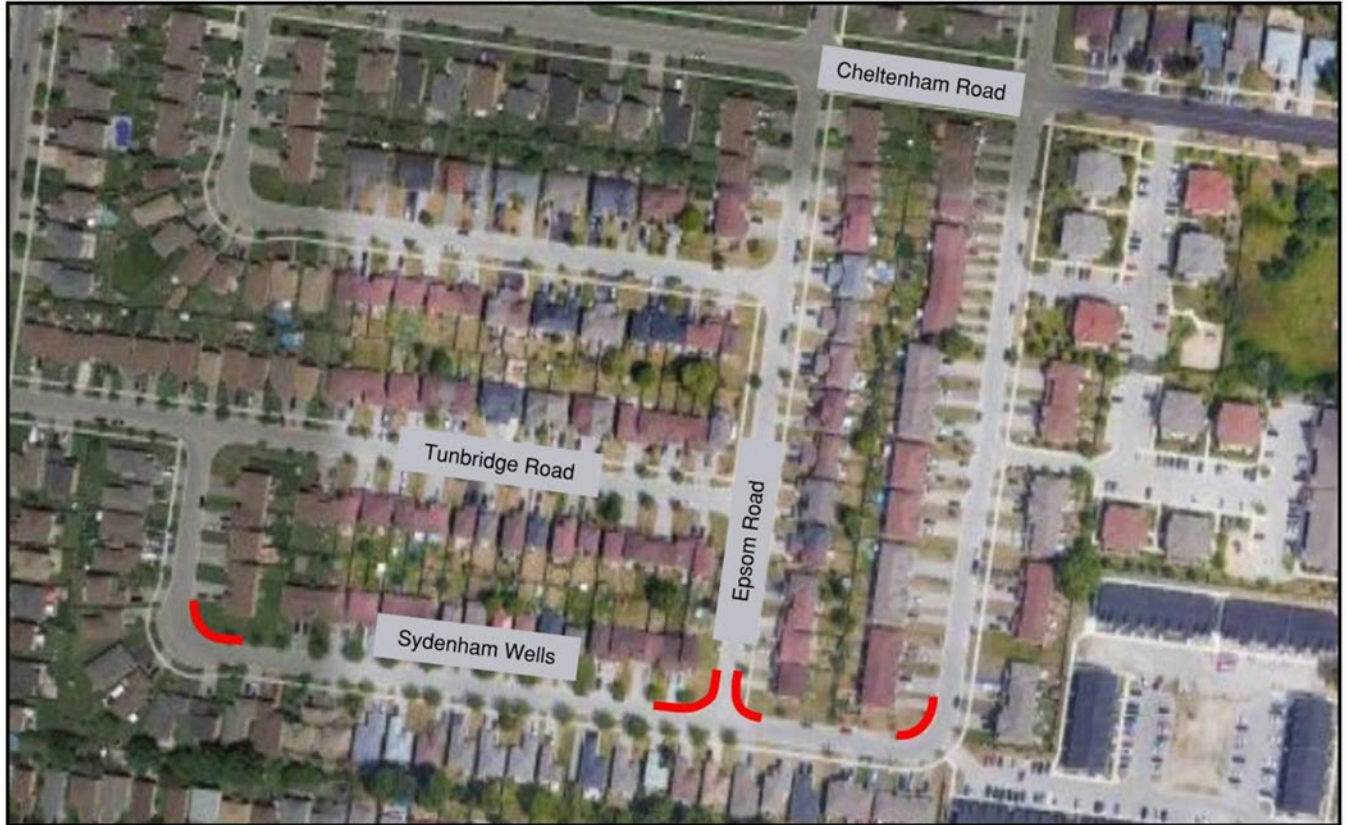
21. The costs associated with the installation of “No Parking Anytime” signs for Sydenham Wells are approximately \$1,500 and “No Parking Anytime” signs for Penetanguishene Road are approximately \$8,000. These costs can be accommodated in the 2024 Operating Budget.



**LINKAGE TO 2022-2026 STRATEGIC PLAN**

22. The recommendation(s) included in this Staff Report support the following goals identified in the 2022-2026 Strategic Plan:
- Community Safety
23. The recommendation of amending the “No Parking Anytime” Traffic By-law to further restrict parking on Sydenham Wells and Penetanguishene Road will improve the traffic operation and safety of each roadway.

APPENDIX "A"

Sydenham Wells No Parking Anytime



	Proposed No Parking Anytime	Ward: 2	
	Sydenham Wells	Design: AP	
	 No Parking Anytime	Date: March 2024	



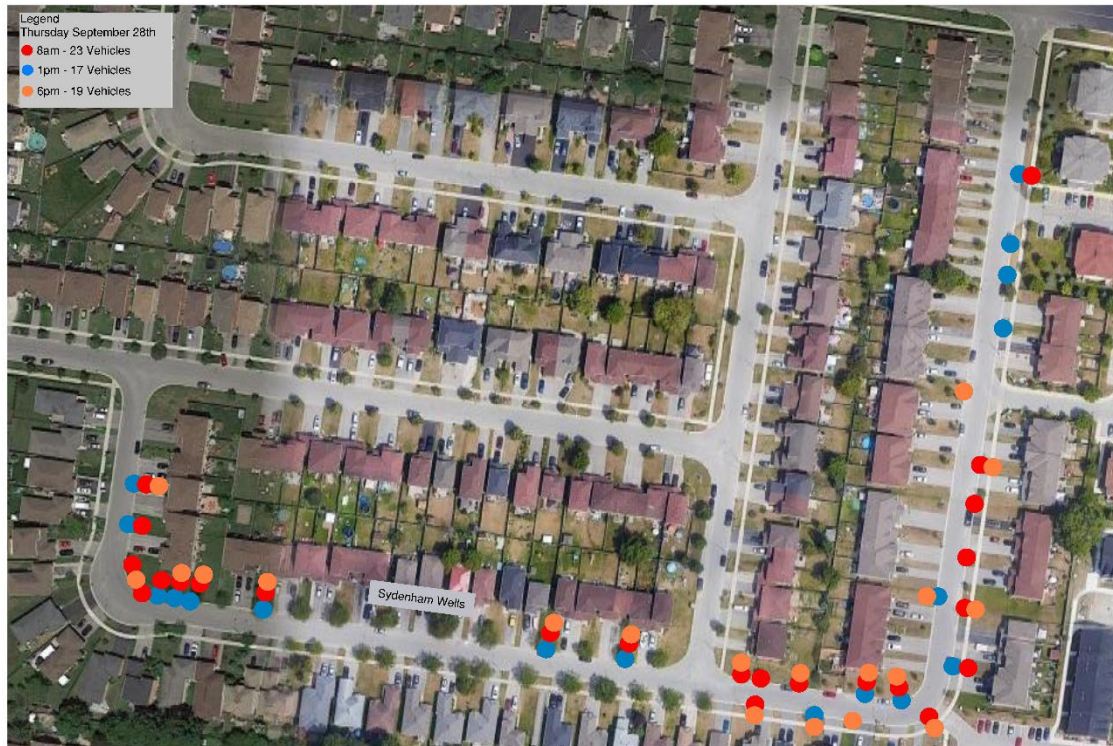


---

APPENDIX "B"

Sydenham Wells Parking Analysis





APPENDIX "C"





**Penetanguishene Road No Parking Anytime**



APPENDIX "D"

Penetanguishene Road Parking Analysis



	Parking Study Results	Ward: 1
	Penetanguishene Road	Design: AP
	 Parked Vehicles	Date: May 2024