

SANDY HOLLOW BUFFER DISC GOLF COURSE

434 Ferndale Drive North

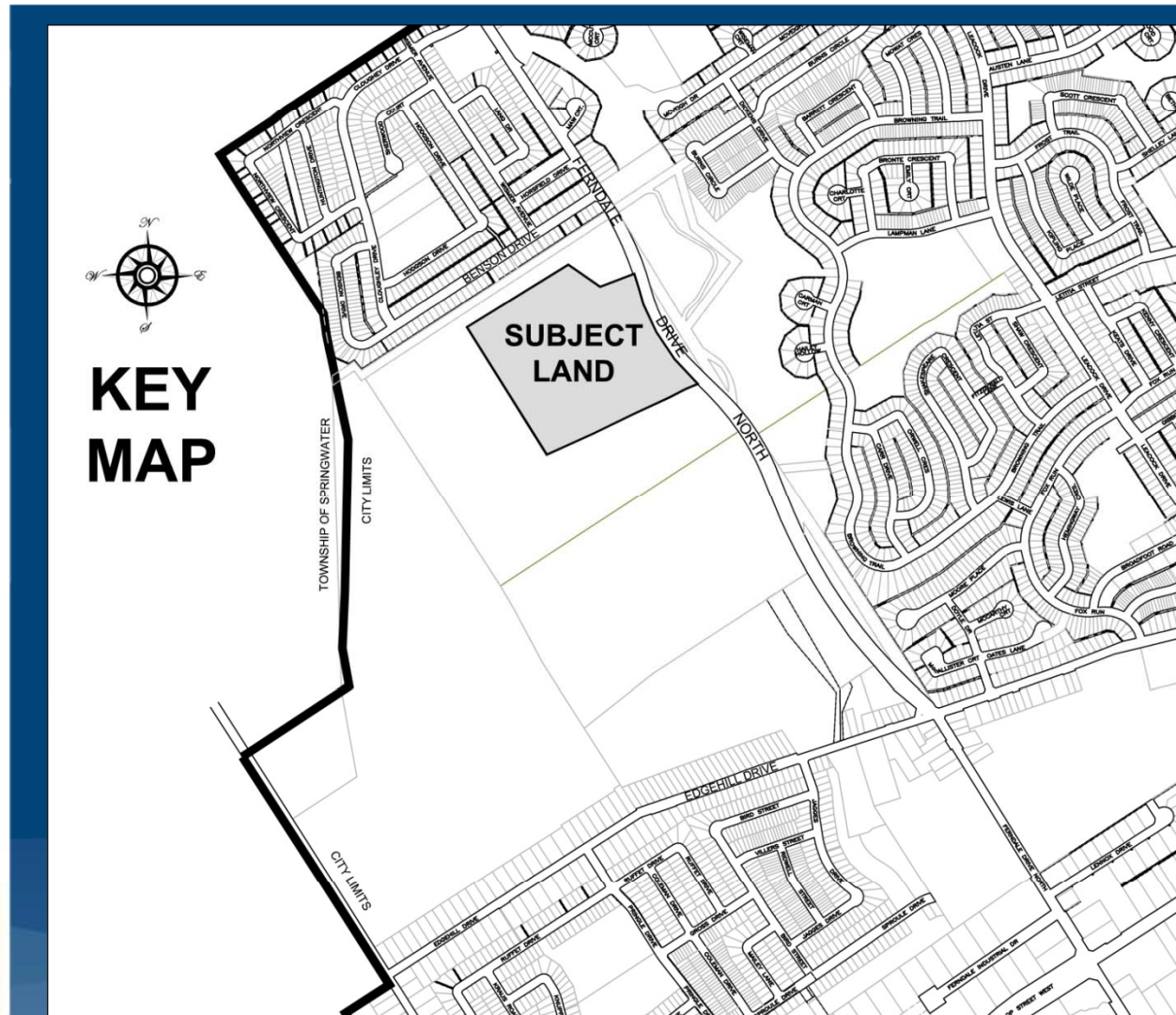
Public Meeting for Official Plan Amendment
and Amendment to Zoning By-law.

Parks Planning and Development Section
Barrie Disc Golf Association

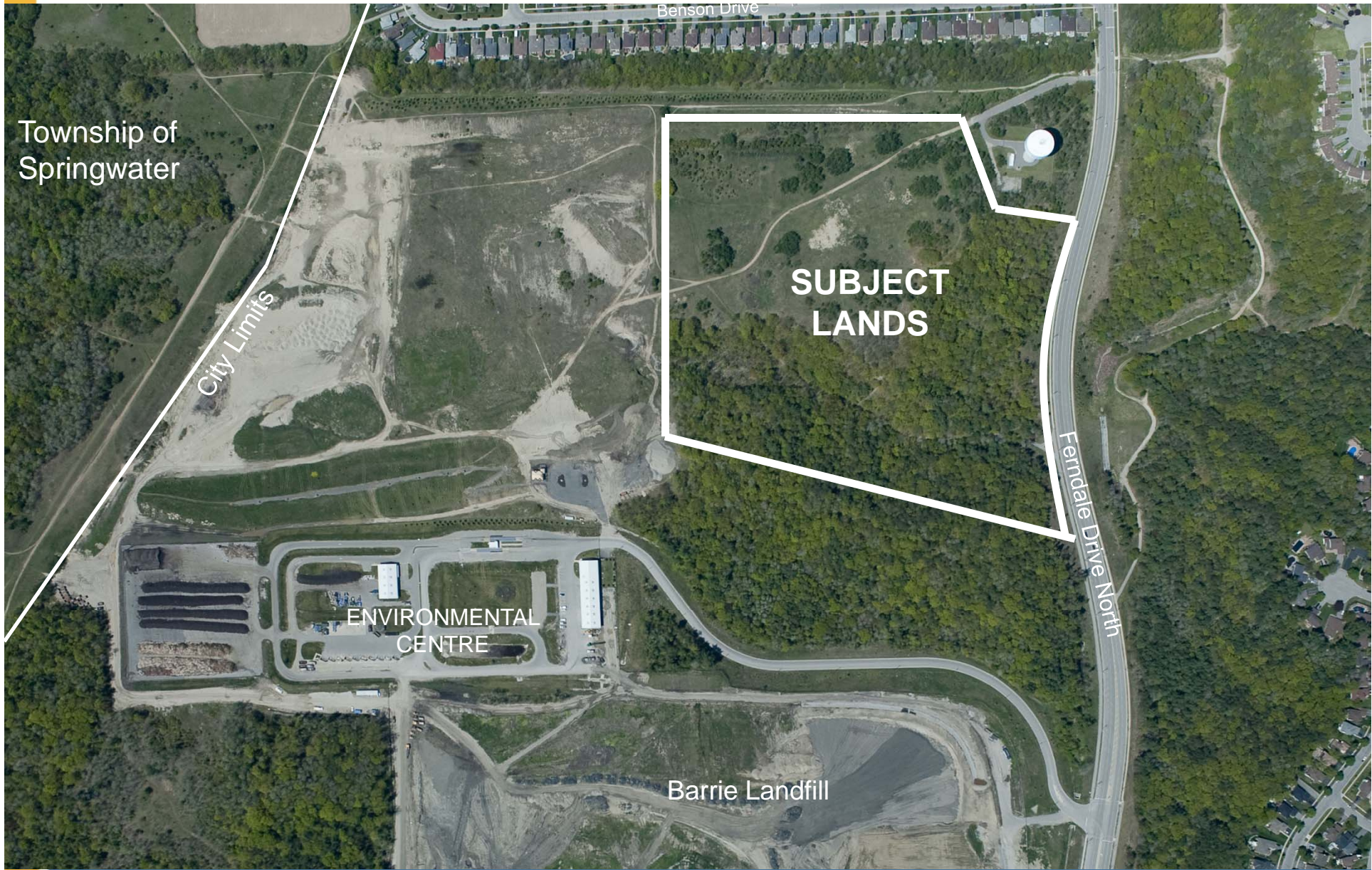
April 23, 2012



Location



- West side of Ferndale Drive North in north-east corner of Landfill buffer area



Township of
Springwater

City Limits

Benson Drive

SUBJECT
LANDS

ENVIRONMENTAL
CENTRE

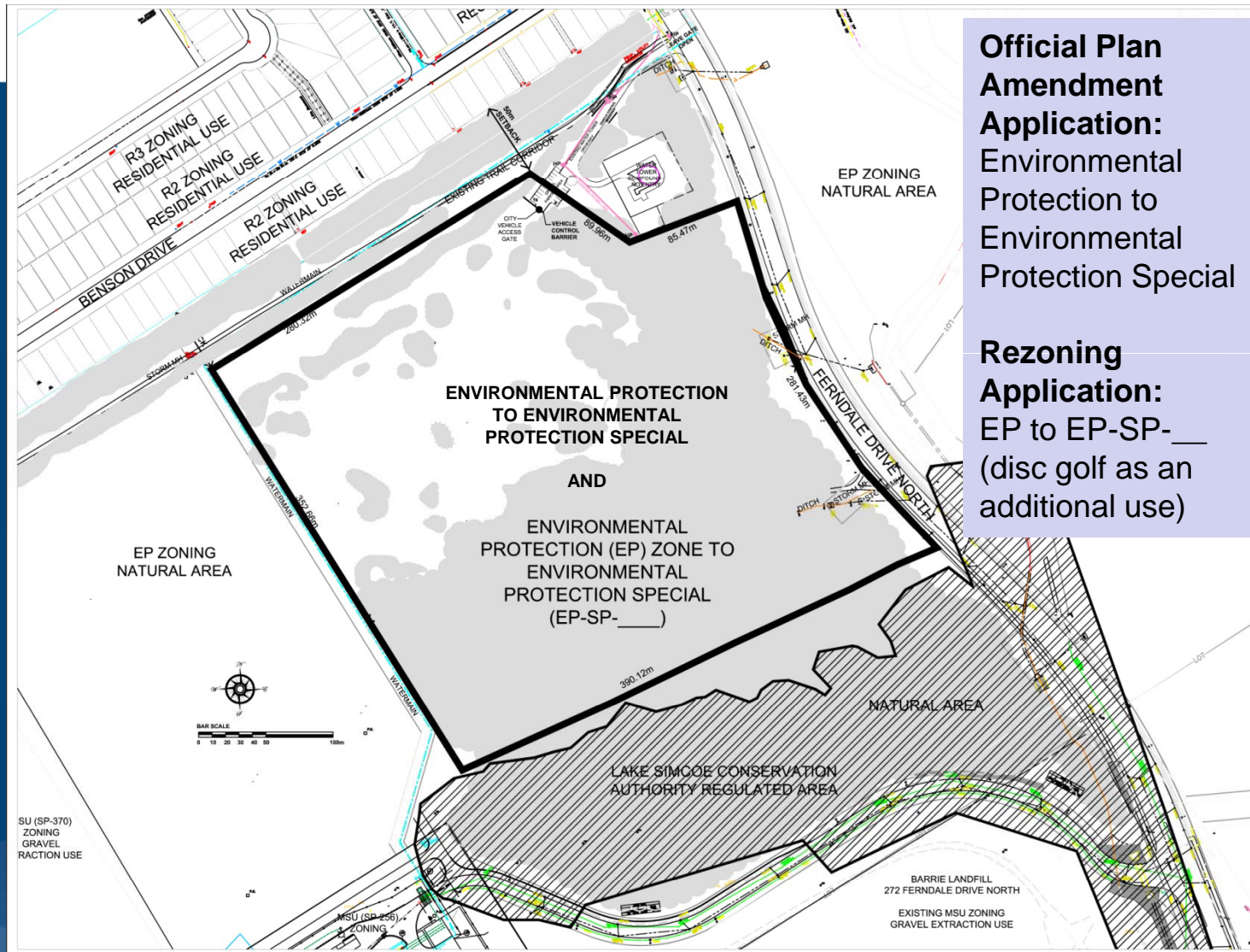
Barrie Landfill

Ferrdale Drive North

Nature of Application

- To Redesignate in the Official Plan to lands from Environmental Protection to Environmental Protection Special to allow a disc golf course as an additional use.
- To Rezone the lands from Environmental Protection (EP) Zone to Environmental Protection SP Zone to allow a disc golf course as an additional use.
- Initially north-west portion was to be Open Space Special but after consultation with Environmental Advisory Committee, whole area is proposed as Environmental Protection Special

Sandy Hollow Disc Golf Course – Proposed Amendment



Official Plan Amendment Application:
 Environmental Protection to Environmental Protection Special

Rezoning Application:
 EP to EP-SP-___
 (disc golf as an additional use)

The City of **BARRIE**

18 HOLE DISC GOLF COURSE
 430 Ferndale Drive North
 PARKS PLANNING & DEVELOPMENT SECTION

KEY MAP

LEGEND

LANDS SUBJECT TO AMENDMENT

Drawing Title

Schedule "A" to Amendment to Zoning By-law

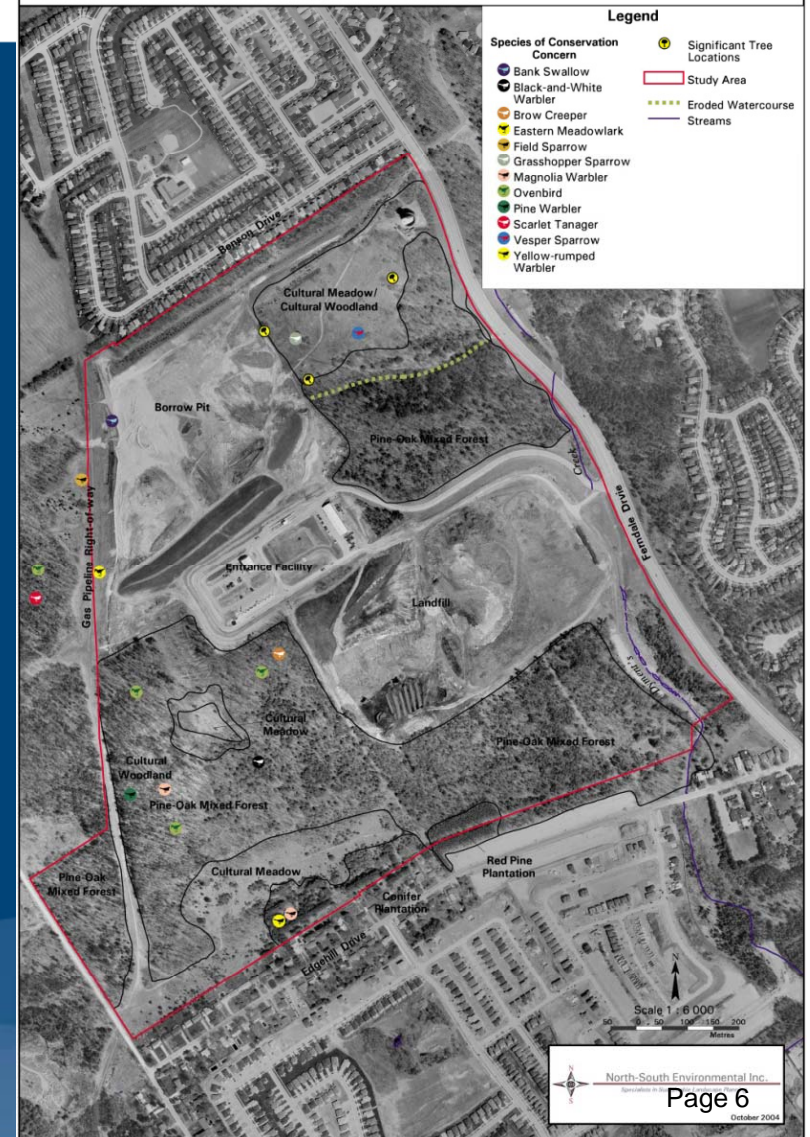
Drawing Date: March 14, 2012
 Last Updated: April 18, 2012
 Drawn by: W.L.

Environmental Impact Study

Existing Municipal Environmental Impact Statement (2004-5) for Composting Facility Rezoning and Proposed Sports Field Development

- Notes two Species of Concern in subject lands: Vesper Sparrow and Grasshopper Sparrow.
- 2012 Update to EIS to occur in May in consideration of proposed disc golf course and rezoning application

Barrie Landfill Development
Figure 2: Vegetation Communities and Significant Features



Existing Conditions: Site Photos

Tablelands

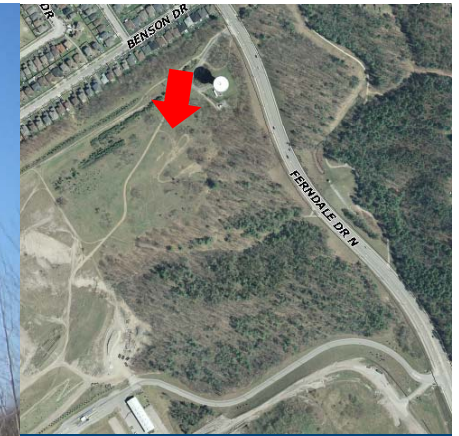
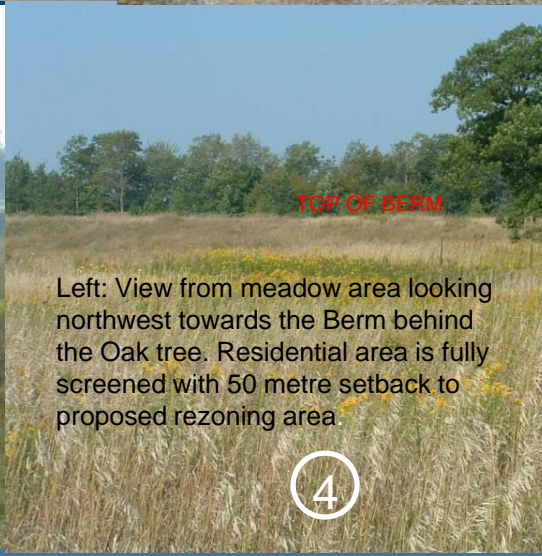
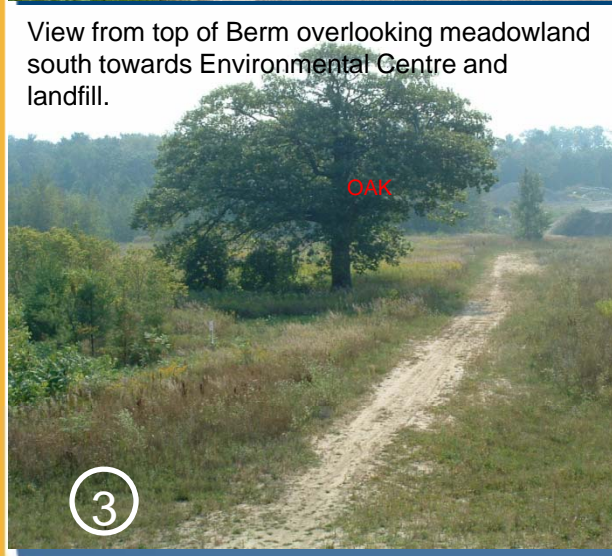
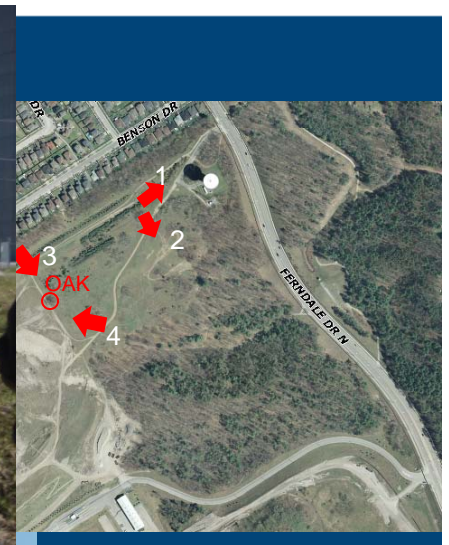
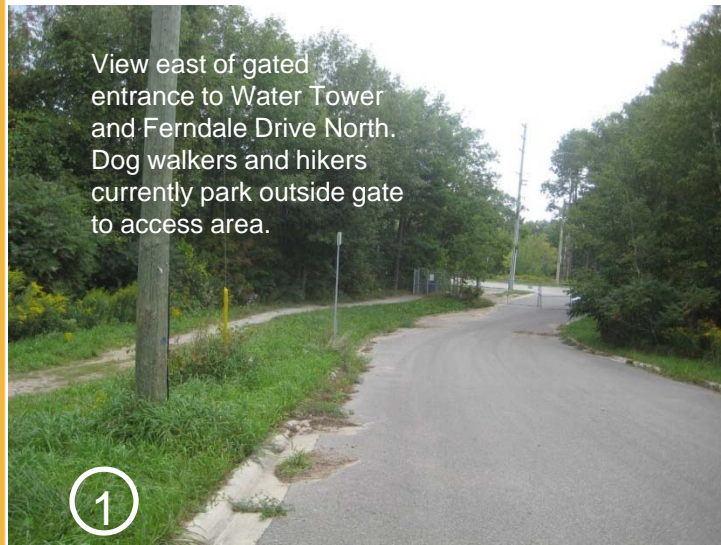


Photo: April 2, 2012.
View south across meadow table land. Used 2x annually for Trench Training by Fire and Emergency Services and occasionally for heavy equipment training. Existing gravel drive area and soil stockpiles.

Existing Conditions

Tablelands



Existing Conditions- Many trails

Forest

Established east-west trail corridor across ridge

1



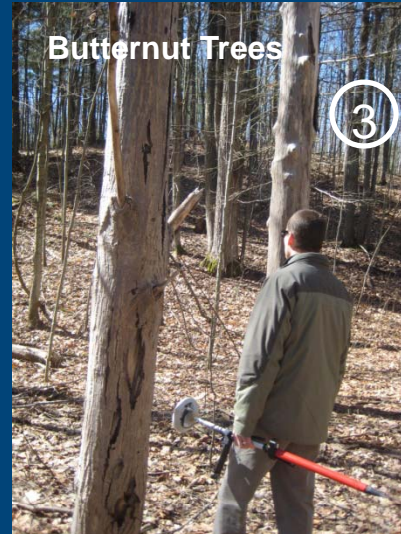
Footpath north from TCT corridor toward tablelands

2



Butternut Trees

3



4



Existing trail corridor heading uphill south to regulated area from TCT

9



Former east-west TCT corridor in valley bottom

8



6



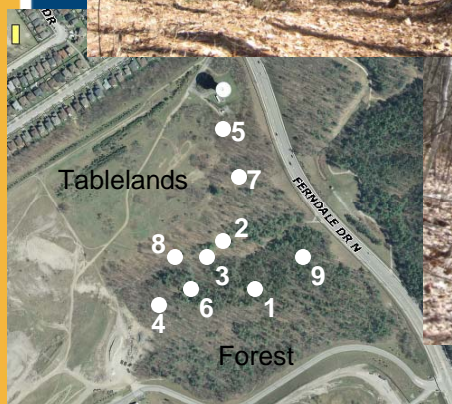
7 Forts in woods



5



Existing openings below water tower- Forest photos April 2, 2012

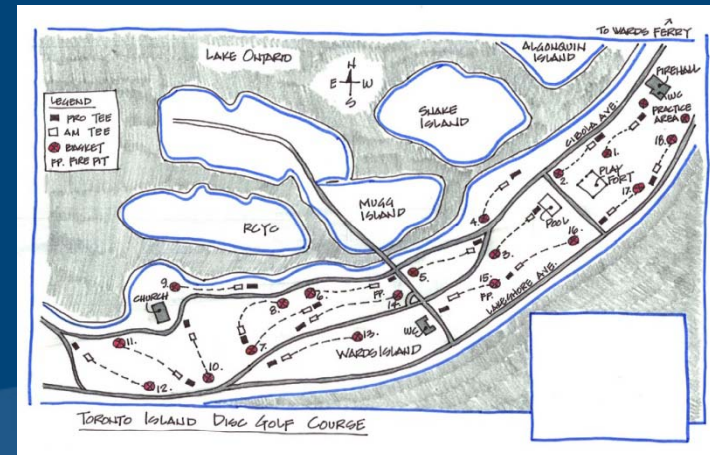


What is Disc Golf?

- Played like traditional golf, except with discs and with narrow “fairways”.
- Each consecutive shot must be made from the spot where the previous throw landed.
- Complete each “hole” in the fewest number of throws by throwing the golf disc from a tee area to an elevated metal basket.



Images: Toronto Island Course. Established 1980. Source: www.discgolfreview.com



Types of Disc Golf Courses

Maintained Parkland - Homewood Park, Orillia



Course Description: 9 Hole, on grass and mostly flat. Free.

Source: <http://www.dgcoursereview.com>

Types of Disc Golf Courses

Combination Open and Woodland Trails in Natural Areas:
Christie Lake Conservation Area

Hole 9 White Tee



Course Description: 18 Hole Course,
Conservation Area Day User Fee
Source: <http://www.dgcoursereview.com>



Hole 2 White Tee

Sandy Hollow Disc Golf Course – Draft Layout



Parking Lot and Vehicle Control Limits Concept Enlargement

- Final layout subject to EIS update, GPS analysis of existing trails and mapping exercise.
- Involves 38 acres of land.
- Located south of #17-59 Benson drive.
- Access from existing roadway for Water Tower.
- Located to south of existing berm and walking trail
- 18 parking spaces proposed as per zoning requirement.
- Setback 50 metres from Benson Drive residential backyard property line.
- Closest Hole is 95 metres from backyards.
- No lighting is proposed.
- Open free to public and maintained by City.
- No anticipated noise to neighbours from disc throwing.
- Serviced by portable toilet.

Project Schedule

March 22, 2012	Site Visit with Lake Simcoe Region Conservation Authority
April 4, 2012	Environmental Advisory Committee Presentation
April 5, 2012	Rezoning Application adjusted to remove OS change in zoning. Entire area to be EP-SP designation
April 23, 2012	Rezoning Application Public Meeting and Presentation to General Committee
April to May 2012	Initiation of EIS update from 2004-2005 Study Findings associated with the Compost Facility application within the Landfill Operations.
July 2012	Submission date for BDGA application for Trillium Grant for Capital Funding to build facility.
Fall 2012	Projected Opening Date of Disc Golf Facility (pending Grant approval timelines)