

# DRAFT of proposed final strategies for inclusion in the refreshed CSWB Plan


**Prepared For:** City of Barrie Community Safety and Well-Being Plan Committee  
March 25, 2025

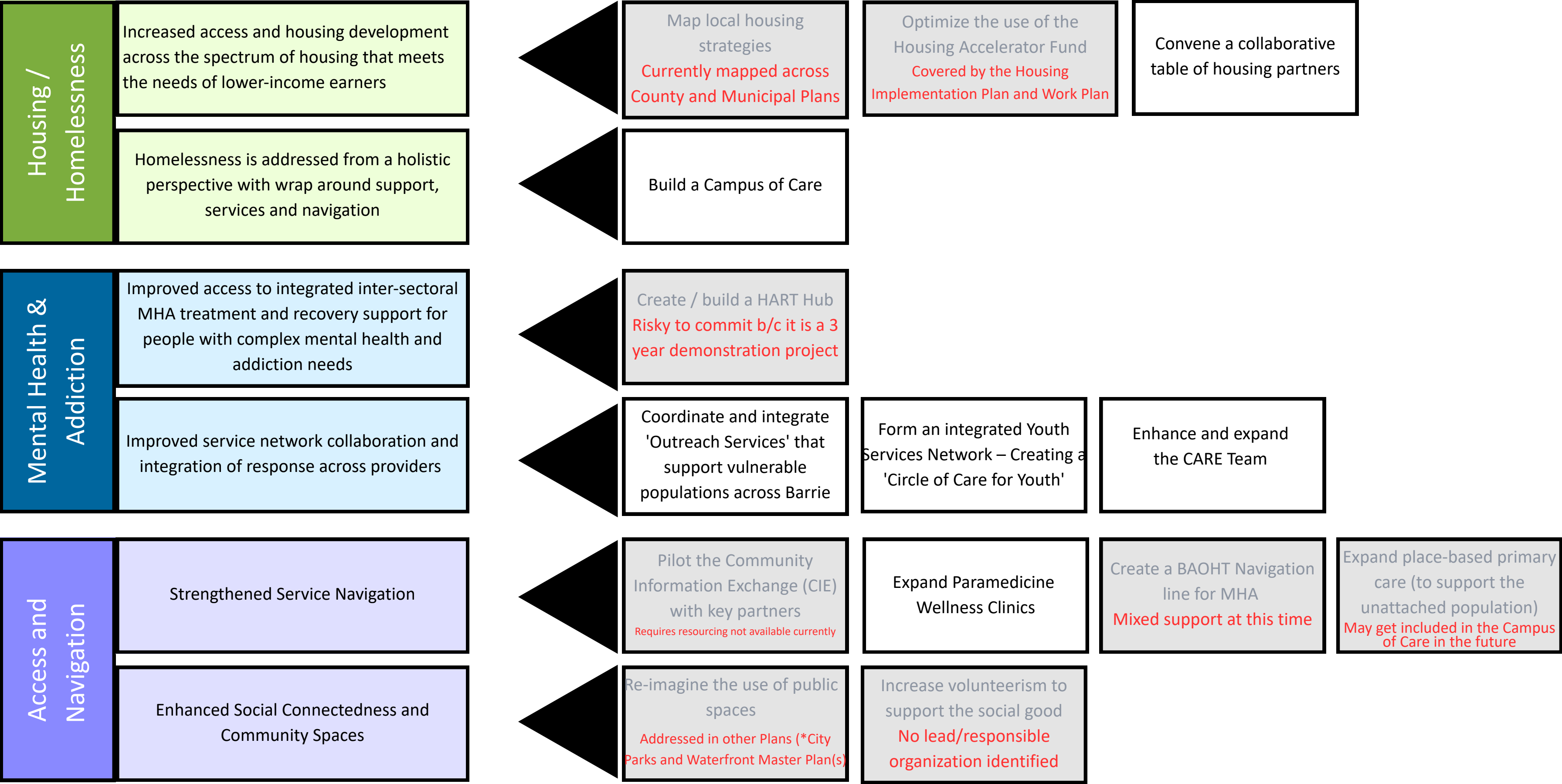


The following slide highlights the possible strategies that were presented to the Committee on February 25, 2025, that resulted from the 'Provider Session' earlier that month.

The **greyed-out** strategies have been investigated and are not recommended at this time for reasons indicated in **red font**.

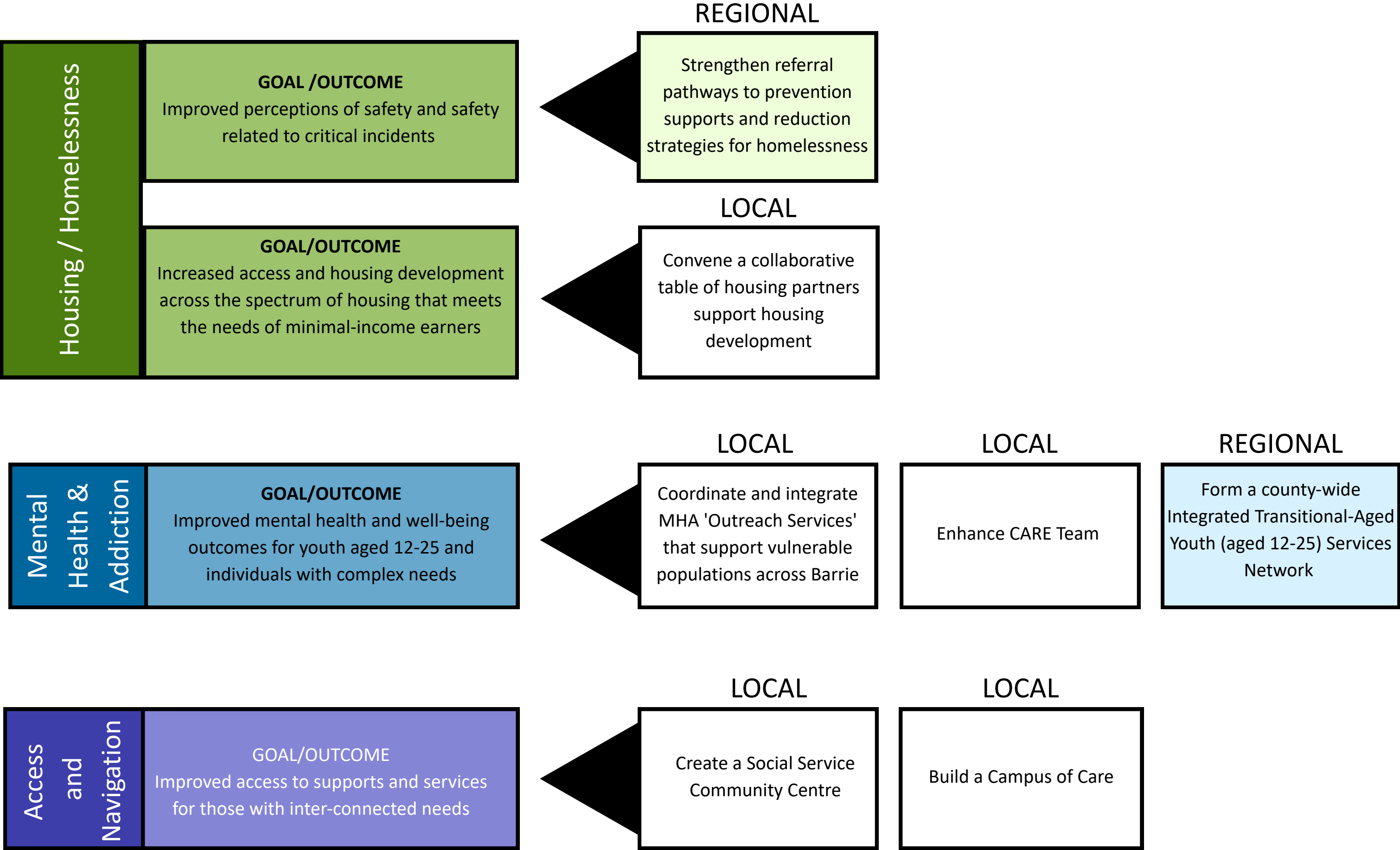
# Proposed Strategies Presented at the Feb 2025 meeting

 = Strategies that will be difficult to pursue. Rationale is in **red**



The following slide highlights the proposed final strategies for inclusion in the refreshed Barrie CSWB Plan 2025-2029

# Refined Barrie CSWB Strategies



The following slides provide details on  
the proposed strategies for inclusion

# Housing / Homelessness Strategy Write-Up

# Building Stability: A Collaborative Response to Housing and Homelessness



**GOAL:** Improve perceptions of safety and safety related to critical incidents



**OBJECTIVE:** Enhance coordinated access to housing and social supports to reduce housing-related safety incidents



**ACTION(s):** Strengthen referral pathways to prevention supports and reduction strategies for homelessness



**LEAD:** County of Simcoe

**Partners:** Shelters, Warming/Cooling Centres, Coordinated Access providers, Indigenous Cultural Safety Training Providers, Trauma-Informed Approaches Education and Training Providers, Police



**MEASURING PROGRESS:**

- # of new engagements/added to the BNL
- Participant survey data:
  - perceptions of safety (qualitative and quantitative)
  - % of clients from equity-deserving groups who report feeling safe, respected, and heard during service encounters
- # of critical incidents (shelter, warming/cooling centres)
- % of case conferencing cases with resolution
- % of partner organizations that have completed cultural safety and trauma-informed care training
- Resident survey data (perceptions of safety)



# Building Stability: A Collaborative Response to Housing and Homelessness



**GOAL:** Increased housing options for those with minimal income



**OBJECTIVE:** Increase access and housing development across the spectrum of housing that meets the needs of those with minimal income



**ACTIONS:** Convene a collaborative table of housing partners to support housing development in Barrie



**LEAD:** City of Barrie

**Partners:** Lower-tier and upper-tier government, provincial representatives, federal representatives, developers, builders, landlords, CMHC, other relevant partners



**MEASURING PROGRESS:**

- # of table members (housing partners)
- # of new partnerships formed between partners
- # of new minimal-income housing inventory added
- % of units that meet deeply affordable criteria
- Time from proposal to approval/launch

# Mental Health and Addiction Strategy Write-Up

# Integrating MHA Care: Designing for Just-In-Time Services



**GOAL:** Improved mental health and well-being outcomes for youth aged 12-25 and individuals with complex needs



**OBJECTIVE:** Enhance coordinated, accessible, and developmentally appropriate mental health and addictions (MHA) services for youth and individuals with complex needs.



**ACTIONS:** Form a county-wide Integrated Transitional-Aged Youth (TAY) Services Network



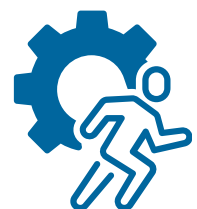
**LEAD:** Integrated Youth Services Network / Catholic Family Services

**Partners:** Youth Hubs, Justice, School Boards, OHTs, Best Start Network, Coalition Member, Indigenous Services, Youth



## MEASURING PROGRESS:

- # of organizations participating in the TAY Services Network
- # and frequency of case conferences
- Improved youth outcomes (e.g., reduced ED visits, increased service engagement)
- Length of time to access services
- Youth and Caregiver Satisfaction Survey results



**ACTIONS:** Coordinate and integrate MHA Outreach Services that support vulnerable populations across Barrie



**LEAD:** Barrie and Area Ontario Health Team

**Partners:** Mental Health or Addiction outreach teams in Barrie



## MEASURING PROGRESS:

- # of outreach providers participating in coordination meetings
- # of joint training or cross-agency workshops delivered
- # of joint funding applications submitted
- # of referrals made between outreach teams
- % of individuals reporting improved access to MHA support
- % of individuals that engage in follow-up care after initial outreach

# Integrating MHA Care: Designing for Just-In-Time Services



**GOAL:** Improved mental health and well-being outcomes for youth aged 12-25 and individuals with complex needs



**OBJECTIVE:** Enhance coordinated, accessible, and developmentally appropriate mental health and addictions (MHA) services for youth and individuals with complex needs.

- Continued -



**ACTIONS:** Enhance the C.A.R.E Team Pilot (ages 18+)



**LEAD:** County of Simcoe (Paramedics)  
**Partners:** CMHA, Barrie Police Service



**MEASURING PROGRESS:**

- # of paramedics specially trained
- # of coordinated responses (calls)
- % of calls diverted from the emergency department
- Reduction in repeat calls

# Access and Navigation Strategy Write-Up

# Simplifying Access: Integrated Spaces for Interconnected Needs



**GOAL:** Improved access to supports and services for those with inter-connected needs



**OBJECTIVE:** Increase service integration and reduce access barriers by co-locating and coordinating multi-sector supports for individuals with complex and interconnected needs.



**ACTIONS:** Create a Social Service Community Centre



**LEAD:** Barrie Police Service  
**Partners:** Health, Mental Health, Indigenous-led Services, Social and Community Services,



**MEASURING PROGRESS:**

- # of individuals served through the Centre or Campus (monthly/annually)
- % of clients with multiple needs (e.g., mental health + housing + income) receiving coordinated support
- Average # of services accessed per individual
- Wait time from initial contact to service access (by service type)
- % of clients who report ease of navigating services (via satisfaction surveys)



**ACTIONS:** Build a Campus of Care



**LEAD:** Barrie Cares  
**Partners:** Academia, Health, Mental Health and Addiction, Housing, Indigenous-led Services, Social and Community Services, Local Government

Each strategy will be framed with rationale and evidence  
as to why it is needed and what is positioned to address