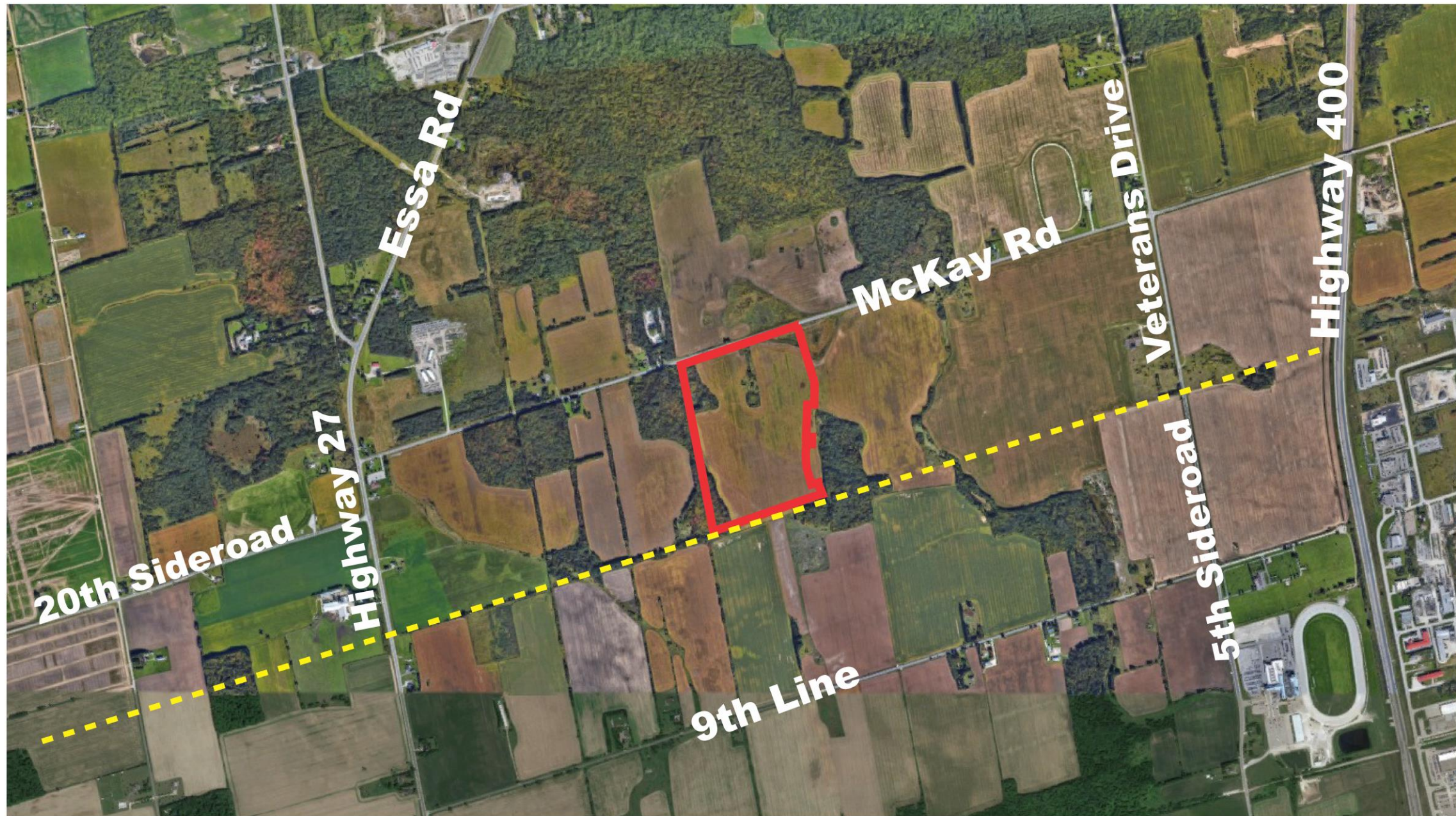




Zoning By-law Amendment

301 McKay Road West
City of Barrie

Subject Lands



NTS



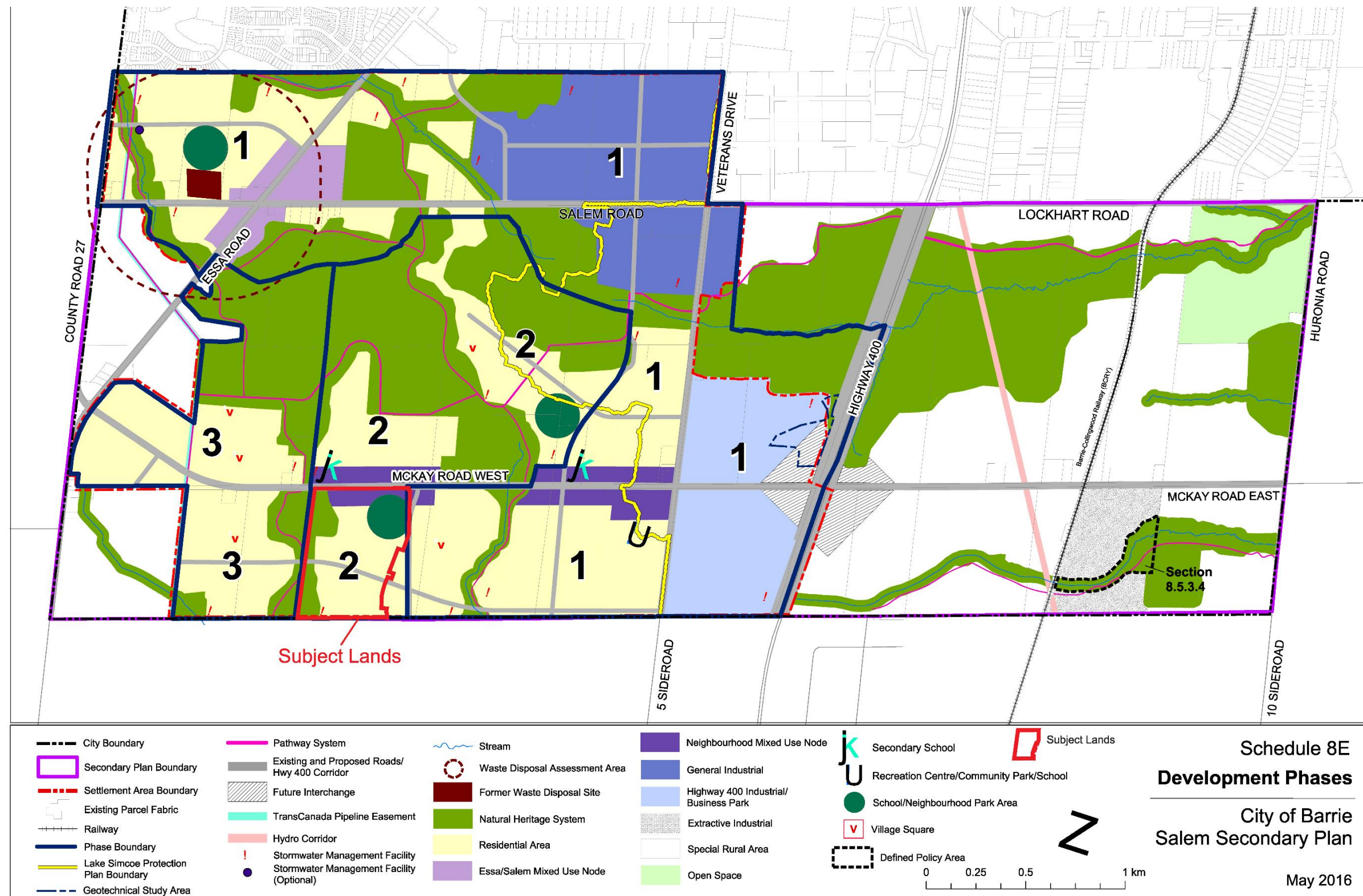
301 McKay Road

Highway 27 and McKay Road



Part of the North Half of Lot 3, all of the North Half of Lot 4 and Part of Lot 5,
Concession 9, Former Geographic Township of Innisfil
City of Barrie

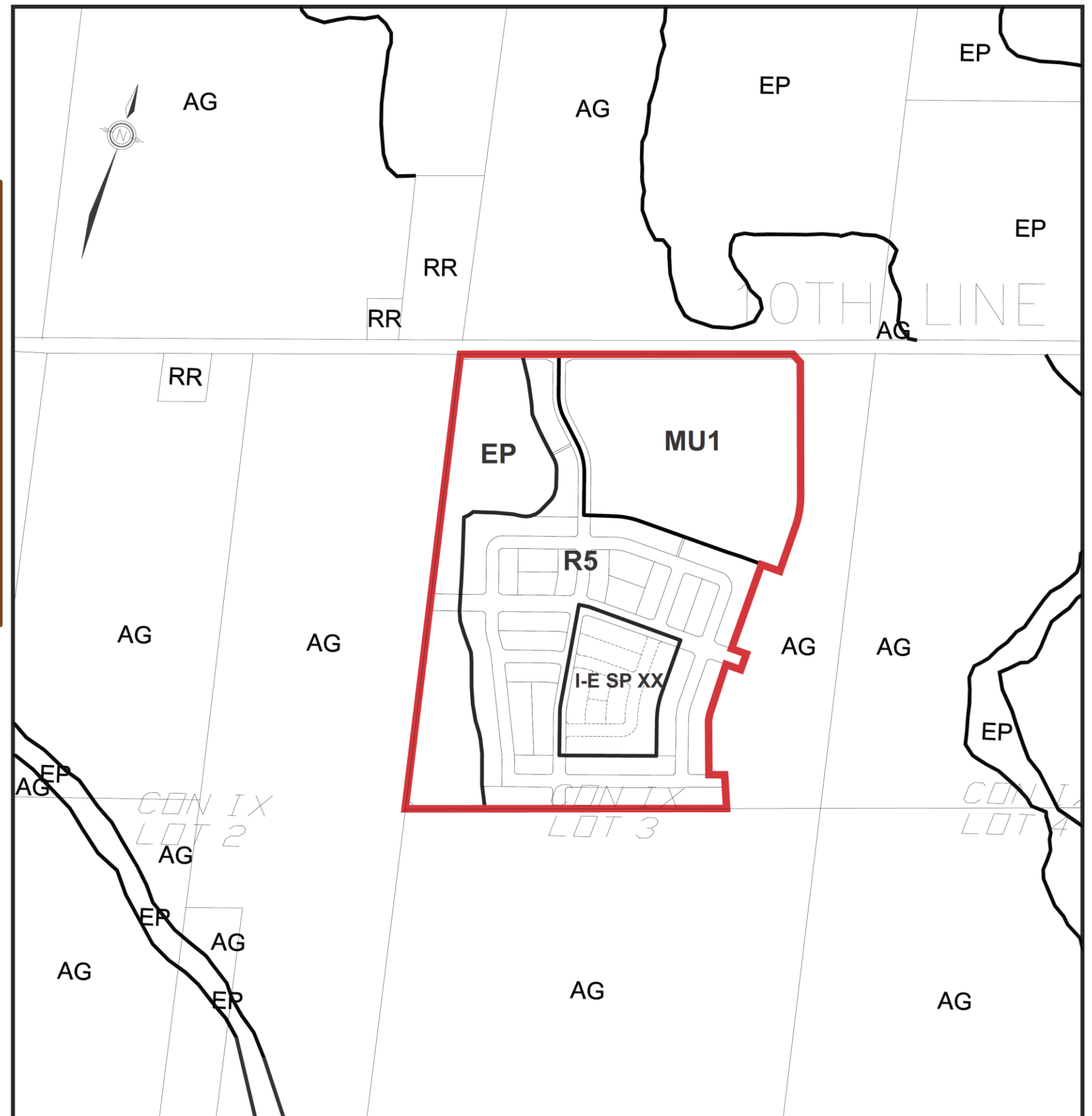


Salem Secondary Plan

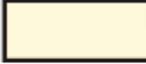






Proposed Zoning By-law Amendment

-  SUBJECT LANDS
-  ZONE BOUNDARIES
- R5- RESIDENTIAL
- EP- ENVIRONMENTAL PROTECTION
- MU1- MIXED USE NODE
- I-E SP XX- EDUCATIONAL SPECIAL
INSTITUTION SPECIAL PROVISION



Proposed Development

	15.3m SINGLE DETACHED	15 UNITS	6%
	13.7m SINGLE DETACHED	48 UNITS	19%
	11.6m SINGLE DETACHED	115 UNITS	46%
	10.0m SINGLE DETACHED	26 UNITS	10%
	6.3m TOWNHOUSES	49 UNITS	19%

TOTAL = 253 UNITS 100%

81% SINGLE DETACHED
19% TOWNHOUSES



Supporting Studies

- **Planning Justification Report**, prepared by KLM Planning Partners;
- **Preliminary Environmental Noise Report** prepared by Jade Acoustics
- **Functional Servicing Report** prepared by Schaeffers Consulting Engineers;
- **Traffic Calming Plan** prepared by JD Northcote Engineering Inc.'
- **Preliminary Grading and Servicing Plan** prepared by Schaeffers Consulting Engineers;
- **Stage 1 Topsoil Stripping Plan** prepared by Schaeffers Consulting Engineers;
- **Stormwater Management Pond "C" Plan & Sections** prepared by Schaeffers Consulting Engineers;
- **Archaeological Report** prepared by This Land Archaeology Inc.;
- **Traffic Impact Study** prepared by JD Northcote Engineering Inc.;
- **Urban Design Brief** prepared by MBTW-Wai;
- **Trail Study** prepared by MBTW-Wai;
- **Tree Inventory/ Preservation Plan** prepared by JDB Associates Ltd.;
- **Environmental Impact Study** prepared by Michaliski Nielsen Associates Ltd.;
- **Geotechnical Investigation and Hydrogeological Investigation** prepared by EXP Services Inc.



Questions?

301 McKay Road West
City of Barrie