

Roads, Parks and Fleet 101

DATE: MAY 14, 2019

PRESENTED BY: DAVE FRIARY



RPF's Mandate is the **Operation and Maintenance** of the City's Public Works

Roads

- Road surface & bridge maintenance
- Winter control
- Street sweeping
- Roads & sidewalk repairs
- Catch basin, oil grit separator cleaning & repairs
- Watercourse maintenance, (including channel and structure repairs & storm water management facility maintenance
- Sanitary sewer repairs; flushing & inspections
- Operation of the Barrie Collingwood Railway

Parks

- Maintenance of over 3,100 acres of waterfront, parkland and open space including 127 parks & 145 kilometers of trails
- Horticulture displays & maintenance
- Turf management
- Shoreline maintenance
- Maintenance of parks amenities (playgrounds, playcourts, picnic shelters, & splash pads)
- Landscape construction
- City's outdoor rink program
- Trails maintenance & winter snow removal operations.

Forestry

- Planting, inspection, & maintenance of over 35,000 City owned trees
- Community engagement, education & awareness
- Vegetation management of natural areas
- The protection & preservation of natural assets through enforcing applicable By-laws
- Invasive species management
- Land development review & approvals related to urban forestry
- Woodland restoration.

RPF's Mandate is the **Operation and Maintenance** of the City's Public Works

Traffic & Parking

- Traffic administration
- Roadway illumination
- Roadway traffic signage,
- Traffic control signals
- Pavement markings
- Traffic safety & guide rails
- Review of collision database
- Parking planning administration
- Parking lots, parking lot snow clearing and paid parking operations
- Traffic calming program

Admin

- Administrative support to a departmental compliment of 113 FTE's. Compliment expands to over 200 employees in the summer months with students and casuals
- Customer service, financial and HR/payroll related duties
- Stores operations & inventory control

Fleet

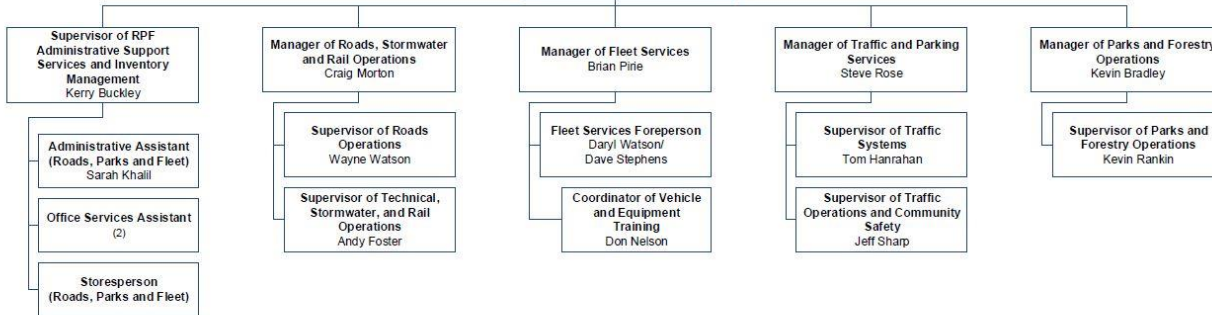
- Purchase, disposal, maintenance & repair of City vehicles & motorized equipment
- Vehicle and equipment Operator training to ensure compliant with all government regulations (CVOR, Drive Clean, Highway Traffic Act, etc.)

Who Is Who Within RPF?

Barrie ORGANIZATIONAL CHART
 Infrastructure and Growth Management Division
 Roads, Parks and Fleet Department



Director of Roads, Parks and Fleet
 Dave Friary



RPF is a very labour intensive Department

- 113 FTE's – Grows to 200+ with seasonal casuals and students
- 24 hours/7 days
- Public facing
 - Services that people see and use daily
 - Affects day to day life in Barrie
- The good/bad/ugly
- High volume of service calls
 - **10,807 Service requests received by RPF Administration staff in 2018 = 41 per day.**

What RPF isn't responsible for might surprise you!

- Road Design (Engineering)
- Road construction (Engineering)
- Park planning (Engineering)
- Washroom maintenance, even in parks (Facilities)
- Parking Enforcement (Legislative and Court Services)
- Garbage collection, except for bins in park (Environmental Services)

Roads, Parks and Fleet – Fun Facts

1,600 kms of roads

2018/2019 Salt usage 18,000 Tons

2018/2019 Winter Sand 15,000 Tons
(includes 4,000 Tons of recycled sand)

127 Parks

3,100 acres of Waterfront

35,000 City owned trees

95 Storm ponds

17,500 pot hole repairs done in 2018

BCRY – We currently have approximately 37 kms of track in service which includes a storage yard in Utopia

1,200 Pieces of equipment – 400
licensed vehicles with an
approximate value of \$45,000,000

Winter Maintenance Events 2017/2018 – 79

Winter Maintenance Events 2018/2019 (to date) 105

145 kms of trails

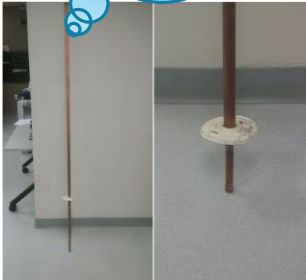
10,000+ Street Lights

RPF Staff are Innovation Leaders!



RPF staff are regular contributors to the City's innovation program and have won several external awards.

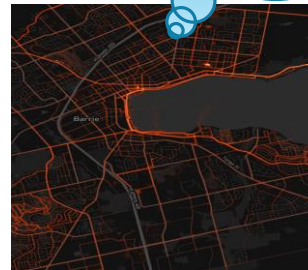
The "Sedometer"



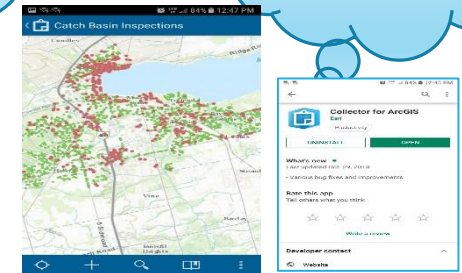
Parks furnishing made from felled trees



Active Transportation tracking through Strava



Sod Repair Collector App



Recycled Street Sweepings



Pilot Projects Offer Opportunities to Test Improved Service Delivery Ideas

Continually investigate methods to provide services more efficiently and effectively to our residents.

- Parks maintenance staff available 7 days a week allowing for coverage during weekend peak times and for special events i.e. Kempenfest.
- Winter Maintenance night shift that ran from November 15, 2018 and ended April 15, 2019 . This has resulted in savings in overtime, sand/salt usage and provided a higher level of service to our residents.



How to Get Answers to RFP Questions?

- Start with Service Barrie!
 - Especially if it involves a service/repair request
 - Quicker action
 - Easier to track follow up
 - Please manage the urge to ask front line staff to take action
- Detailed question/concerns should be emailed to the Director with a cc to Service Barrie and the GM
- Remember RFP for operational issues; likely other departments for planning and enforcement issues. But we are always happy to help direct your enquiry

Questions

