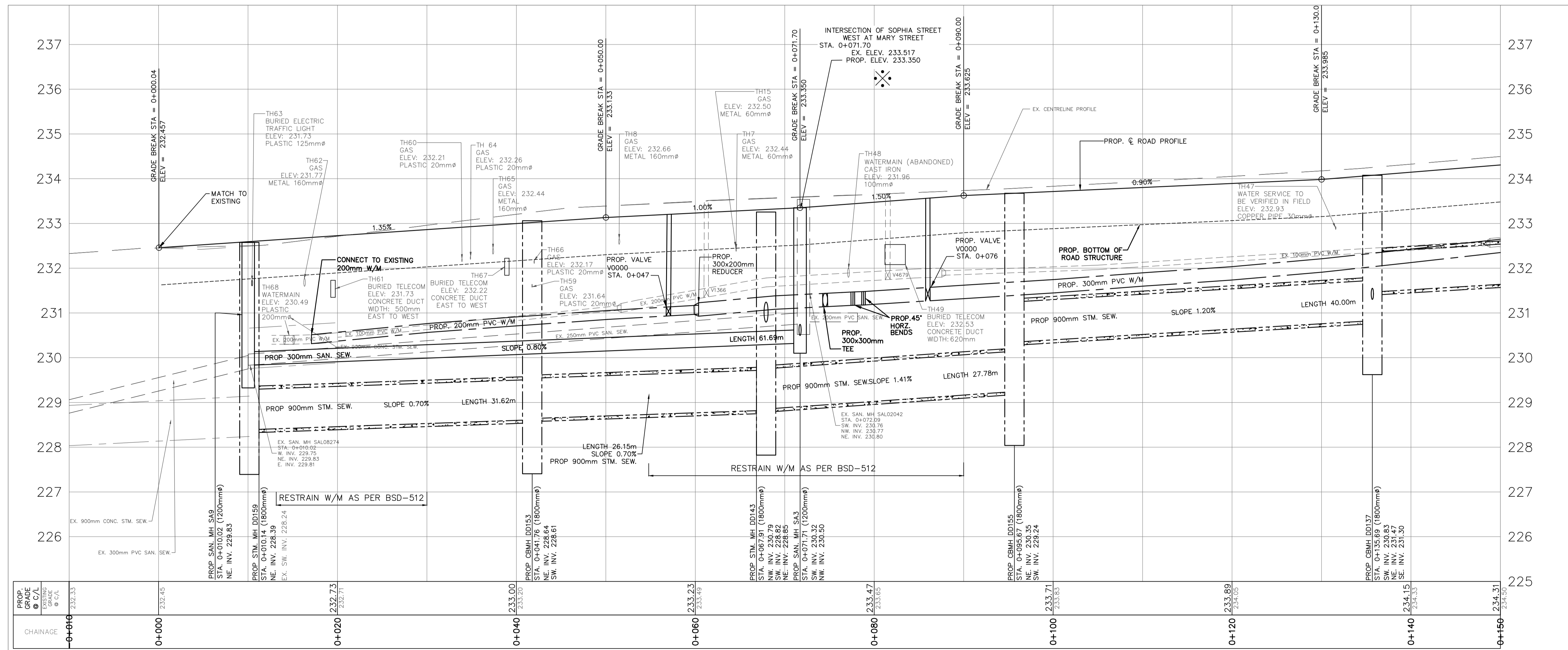
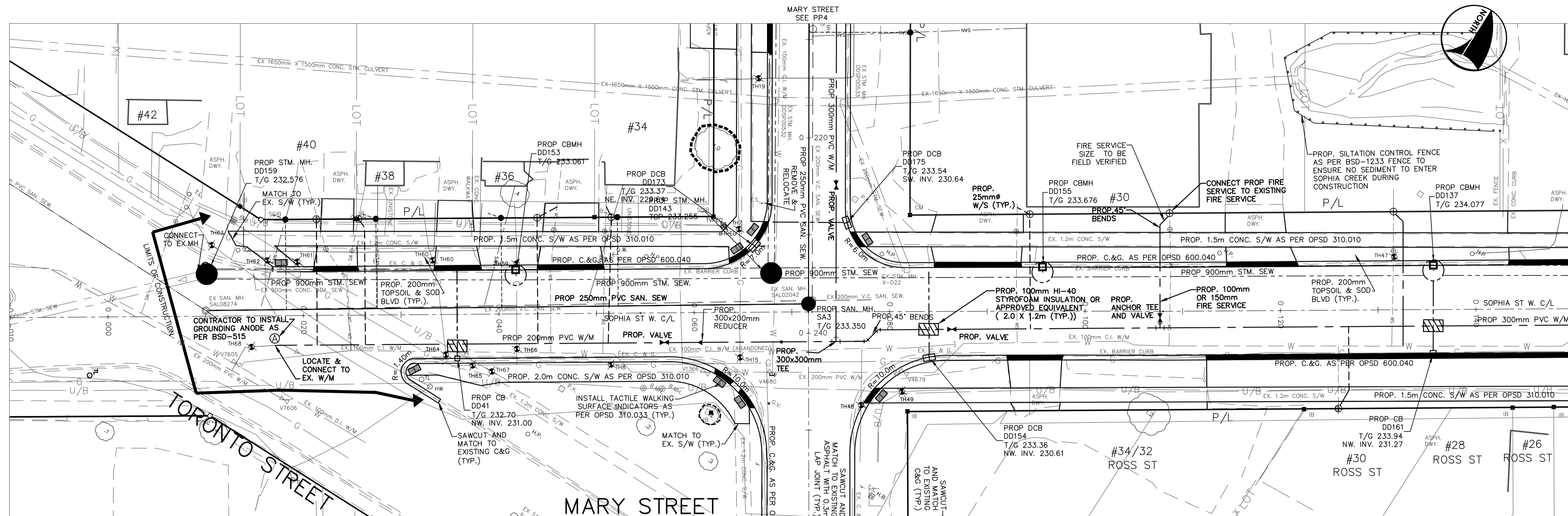
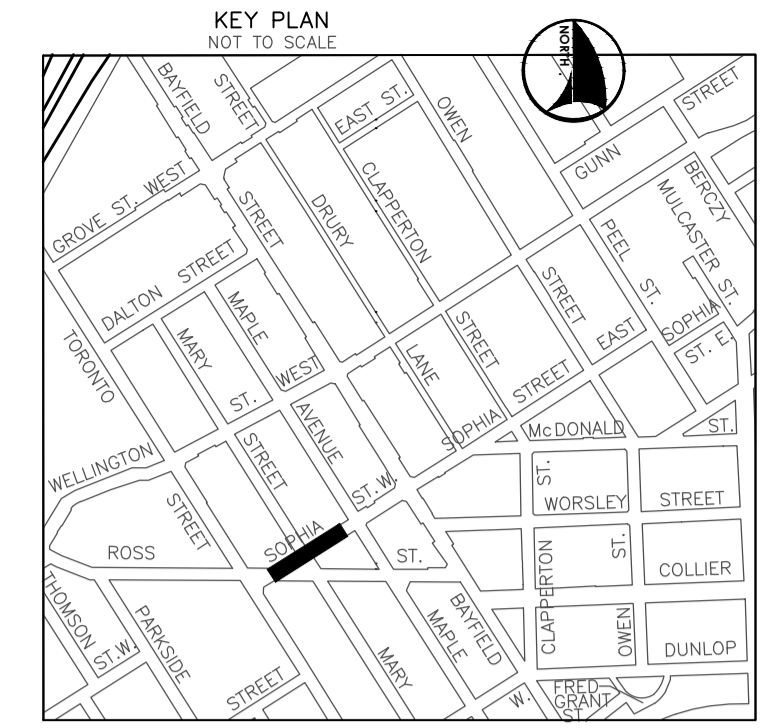


SOPHIA STREET WEST



GENERAL NOTES
REFER TO CURRENT CITY OF BARRIE STANDARDS FOR APPLICABLE GENERAL NOTES.

BEARING NOTE
DISTANCES SHOWN HEREON ARE GROUND DISTANCES AND CAN BE CONVERTED TO GRID DISTANCES BY MULTIPLYING BY THE COMBINED SCALE FACTOR OF 0.9998884

BEARING NOTE
BEARINGS HEREIN ARE GRID BEARINGS AND ARE DERIVED FROM CONTROL MONUMENTS 03120040046 (N=4916082.773, E=603662.430) AND 01019804063 (N=4916487.812, E=604671.597), AND ARE REFERRED TO "THE CENTRAL MERIDIAN (81 DEGREES OF LONGITUDE)" IN ZONE 17 AND ARE BASED ON NAD83 (ORIGINAL) UTM COORDINATES

BENCH MARK V0011968U502
237.270 - COLLIER STREET UNITED CHURCH (FORMERLY WESLEYAN METHODIST CHURCH 1864), ON THE NORTH SIDE OF COLLIER STREET AND WEST OF POINTZ STREET, TABLET IN CENTRE OF FRONT OR SOUTH STONE FOUNDATION OF MOST WESTERLY COLUMN OF BELL TOWER, 150mm BELOW BRICK AND 330mm EAST OF COLUMN CORNER.

BENCH MARKS WILL BE FROM CITY OF BARRIE VERTICAL CONTROL NETWORK. INITIAL BENCH MARK TO BE OF 2nd ORDER ACCURACY

NO.	REVISIONS	DATE	APPROVED
1.	50% DESIGN	09.19.18	A.K.
2.	60% DESIGN	01.24.20	J.B.
3.	90% DESIGN	01.02.21	J.B.

NO.	REVISIONS	DATE	APPROVED
1.	50% DESIGN	09.19.18	A.K.
2.	60% DESIGN	01.24.20	J.B.
3.	90% DESIGN	01.02.21	J.B.

CITY OF BARRIE
ACCEPTED

DATE:

DIRECTOR OF INFRASTRUCTURE

QUEEN'S PARK
NEIGHBOURHOOD RENEWAL
SOPHIA STREET WEST, MARY STREET,
AND MAPLE AVENUE

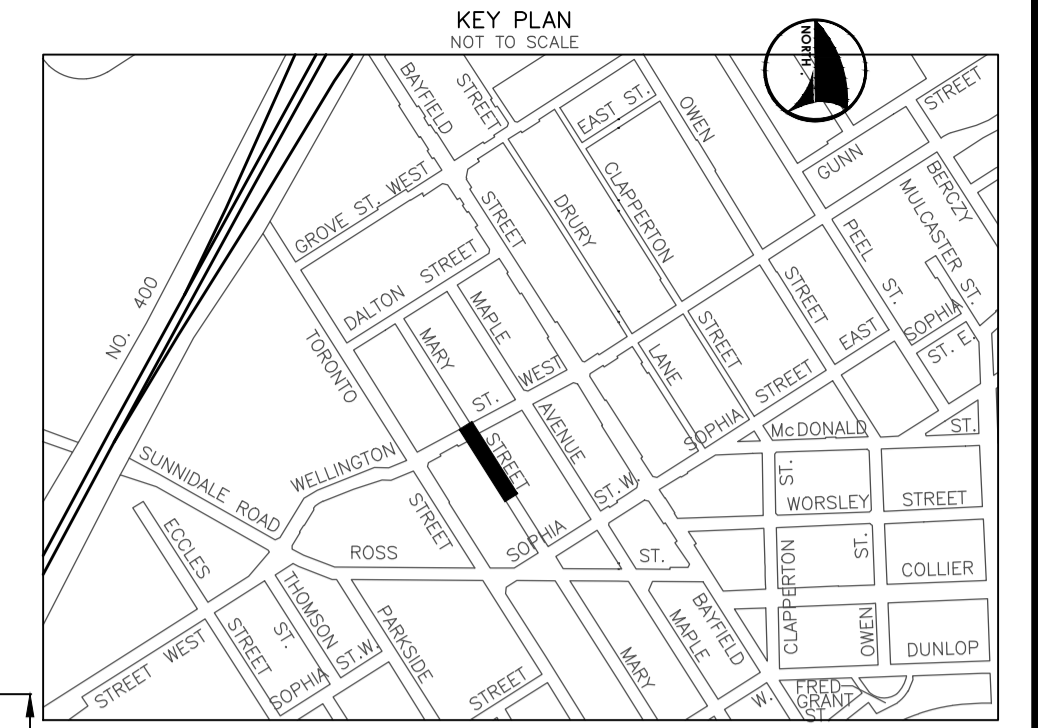
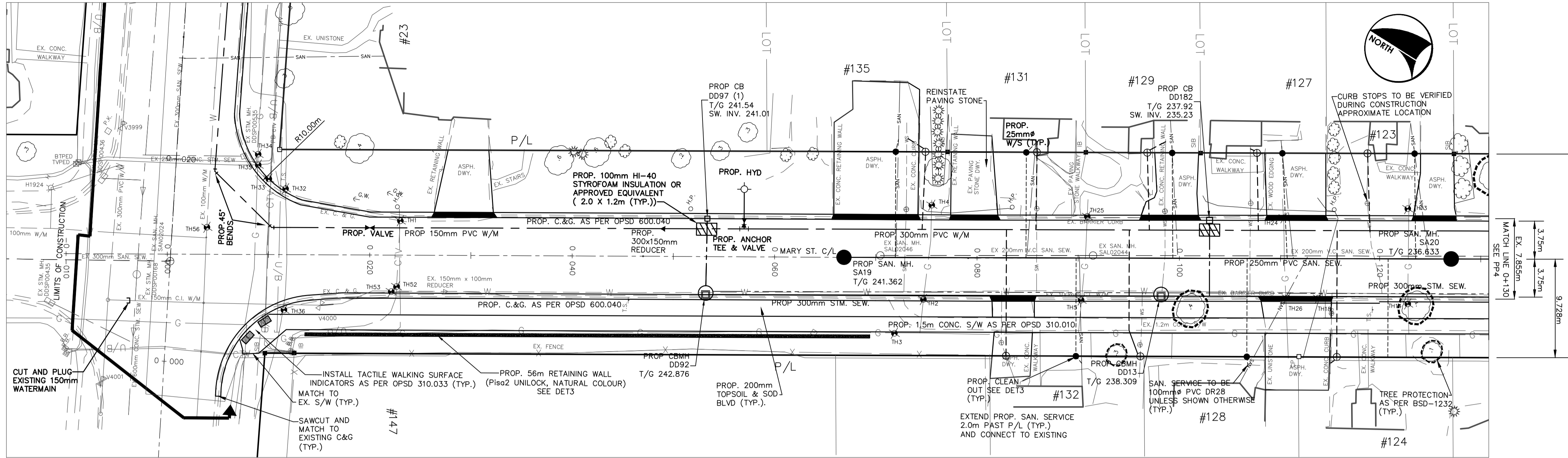
PLAN AND PROFILE - SOPHIA STREET WEST
STA. 0+000 TO STA. 0+150

Barrie
INFRASTRUCTURE DEPARTMENT

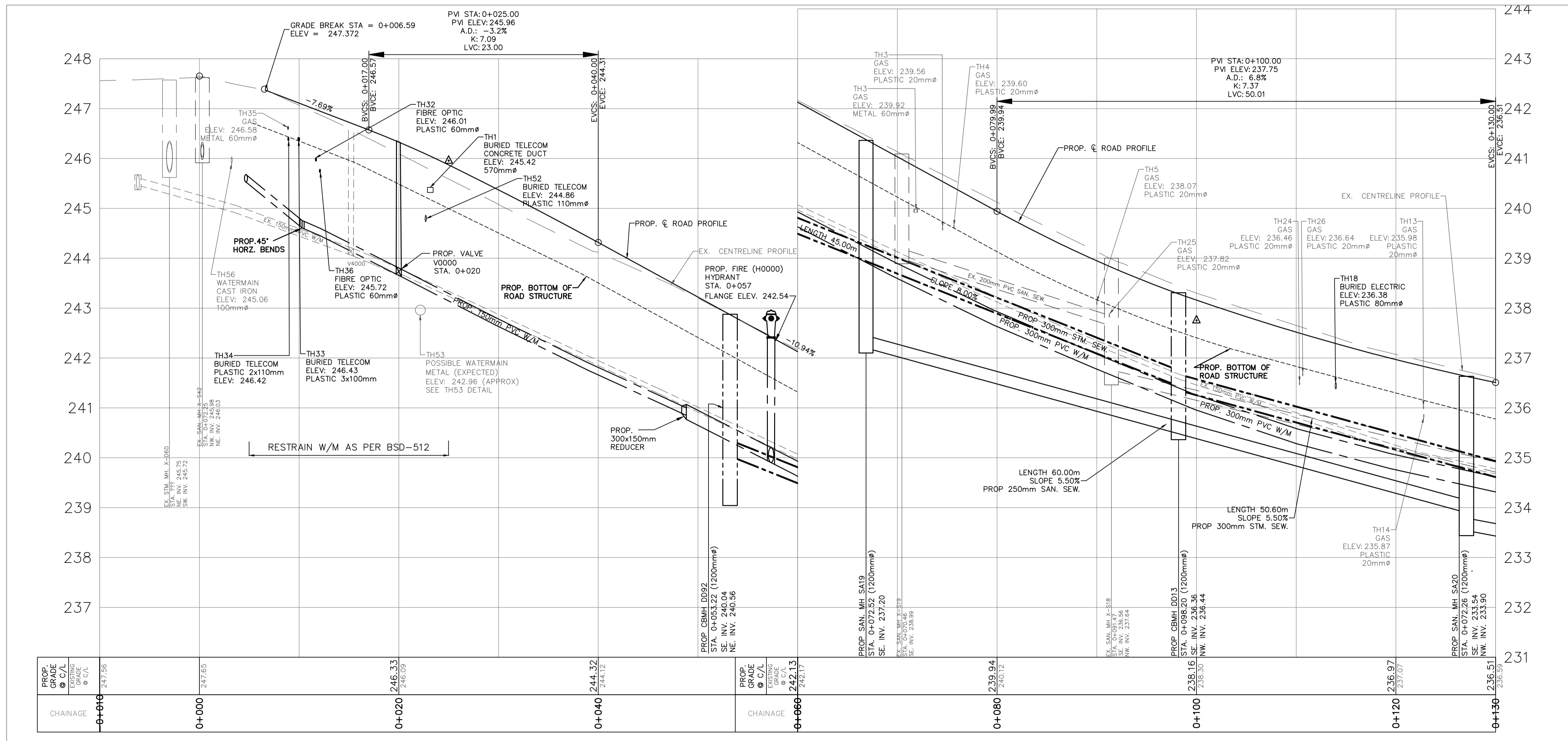
SCALE HOR. 1:250 VERT. 1:50 CONTRACT NO. 2021-000
DESIGN J.D.H. DRAWN J.D.H. SHEET NO. PP1
REVIEWED J.B. DATE 2020.02.01

MARY STREET

WELLINGTON STREET WEST SEE PP7



WELLINGTON STREET WEST



GENERAL NOTES
REFER TO CURRENT CITY OF BARRIE STANDARDS FOR APPLICABLE GENERAL NOTES.

BENCH MARKS
DISTANCE NOTE
DISTANCES SHOWN HEREON ARE GROUND DISTANCES AND CAN BE CONVERTED TO GRID DISTANCES BY MULTIPLYING BY THE COMBINED SCALE FACTOR OF 0.9996884

BEARING NOTE
BEARINGS HEREON ARE DERIVED FROM CONTROL MONUMENTS 03120040046 (N=4916082.773, E=603662.430) AND 01019860483 (N=4916487.812, E=604671.597), AND ARE REFERRED TO THE CENTRAL MERIDIAN (81 DEGREES OF LONGITUDE) IN ZONE 17 AND ARE BASED ON NAD83 (ORIGINAL) UTM COORDINATES

BENCH MARK V0011968U502
237.270 = COLLIER STREET UNITED CHURCH (FORMERLY WESLEYAN METHODIST CHURCH 1864), ON THE NORTH SIDE OF COLLIER STREET AND WEST OF PRINCE STREET, TABLET IN CENTRE OF FRONT OR SOUTH SIDE FOUNDATION OF MOST WESTERLY COLUMN OF BELL TOWER, 150mm BELOW BRICK AND 330mm EAST OF COLUMN CORNER.

BENCH MARKS WILL BE FROM CITY OF BARRIE VERTICAL CONTROL NETWORK. INITIAL BENCH MARK TO BE OF 2nd ORDER ACCURACY

NO.	REVISIONS	DATE	APPROVED
1.	50% DESIGN	09.19.18	A.K.
2.	60% DESIGN	01.24.20	J.B.
3.	90% DESIGN	01.02.21	J.B.

CITY OF BARRIE
ACCEPTED

DATE:

DIRECTOR OF INFRASTRUCTURE

QUEEN'S PARK
NEIGHBOURHOOD RENEWAL
SOPHIA STREET WEST, MARY STREET,
AND MAPLE AVENUE

PLAN AND PROFILE - MARY STREET
STA. -0+010 TO STA. 0+130

Barrie
INFRASTRUCTURE DEPARTMENT

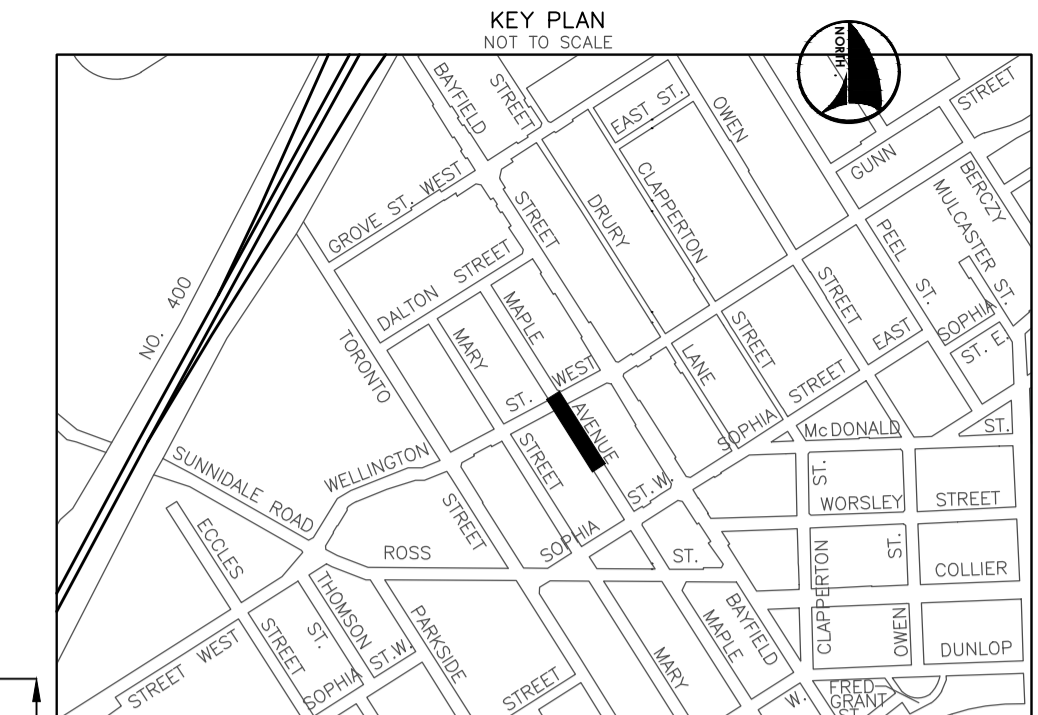
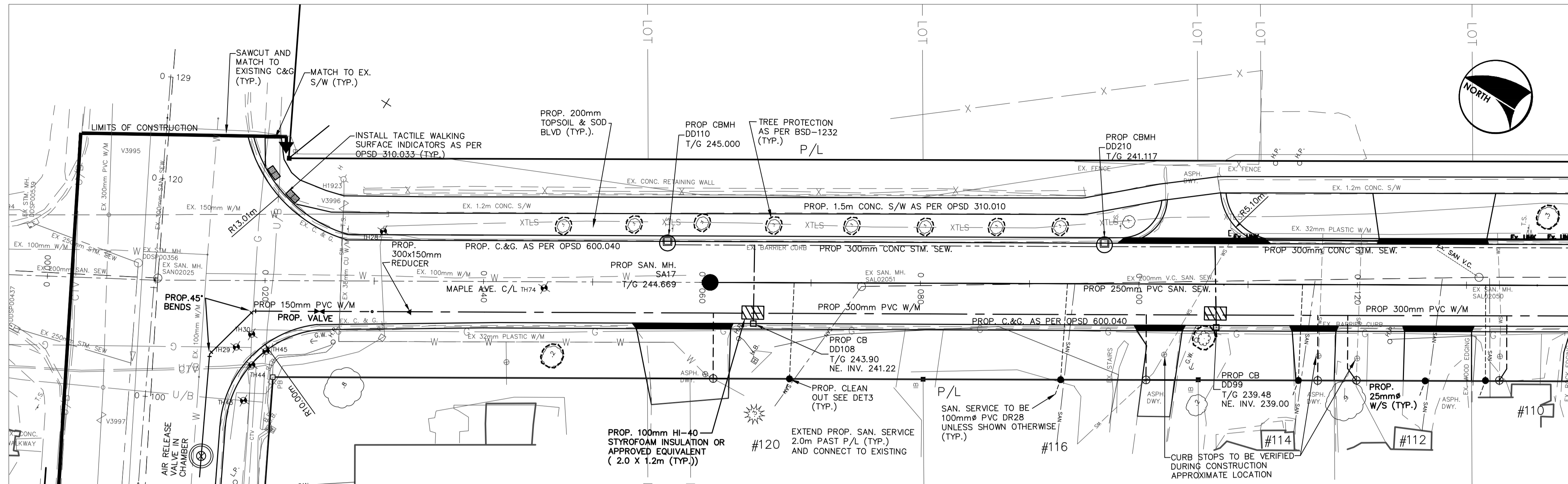
SCALE HOR. 1:250 VERT. 1:50 CONTRACT NO. 2021-000

DESIGN J.D.H. DRAWN J.D.H. SHEET NO. PP3

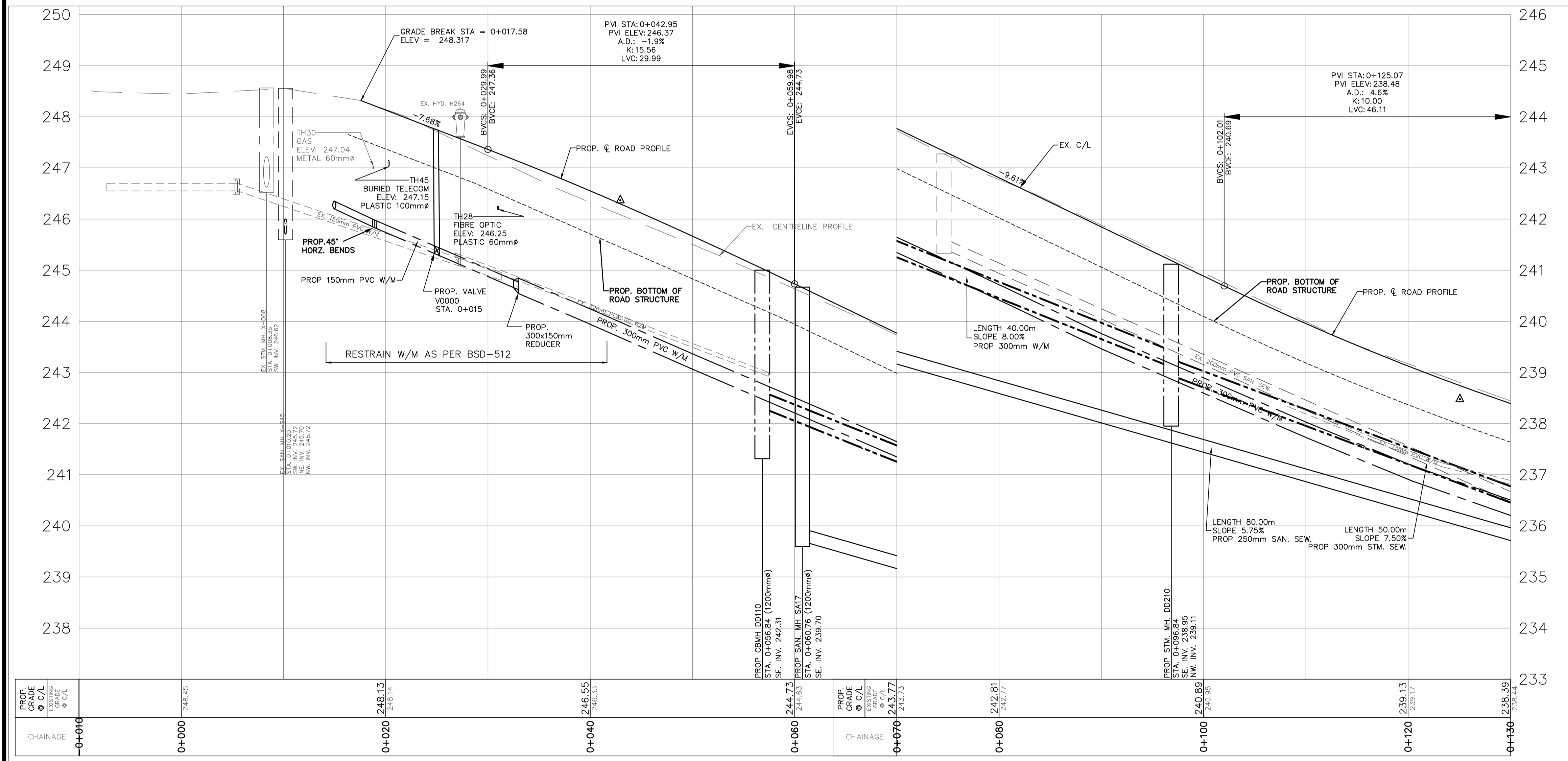
REVIEWED J.B. DATE 2020.02.01

MAPLE AVENUE

WELLINGTON STREET WEST



WELLINGTON STREET WEST SEE PP7



GENERAL NOTES
REFER TO CURRENT CITY OF BARRIE STANDARDS FOR APPLICABLE GENERAL NOTES.

BENCH MARKS
DISTANCE NOTE
DISTANCES SHOWN HEREON ARE GROUND DISTANCES AND CAN BE CONVERTED TO GRID DISTANCES BY MULTIPLYING BY THE COMBINED SCALE FACTOR OF 0.9996884

BEARING NOTE
BEARINGS HEREON ARE GRID BEARINGS AND ARE DERIVED FROM CONTROL MONUMENTS 03120040046 (N=4916082.773, E=603662.430) AND 01019804063 (N=4916487.812, E=604671.597), AND ARE REFERRED TO THE CENTRAL MERIDIAN (81 DEGREES OF LONGITUDE), IN ZONE 17 AND ARE BASED ON NAD83 (ORIGINAL), UTM COORDINATES

BENCH MARK V0011968U502
237.270 - COLLIER STREET UNITED CHURCH (FORMERLY WESLEYAN METHODIST CHURCH 1864), ON THE NORTH SIDE OF COLLIER STREET AND WEST OF POINTZ STREET, TABLE IN CENTRE OF FRONT OR SOUTH STONE FOUNDATION OF MOST WESTERLY COLUMN OF BELL TOWER, 150mm BELOW BRICK AND 330mm EAST OF COLUMN CORNER.

BENCH MARKS WILL BE FROM CITY OF BARRIE VERTICAL CONTROL NETWORK. INITIAL BENCH MARK TO BE OF 2nd ORDER ACCURACY

NO.	REVISIONS	DATE	APPROVED
1.	50% DESIGN	09.19.18	A.K.
2.	60% DESIGN	01.24.20	J.B.
3.	90% DESIGN	01.02.21	J.B.

CITY OF BARRIE
ACCEPTED
DATE:
DIRECTOR OF INFRASTRUCTURE

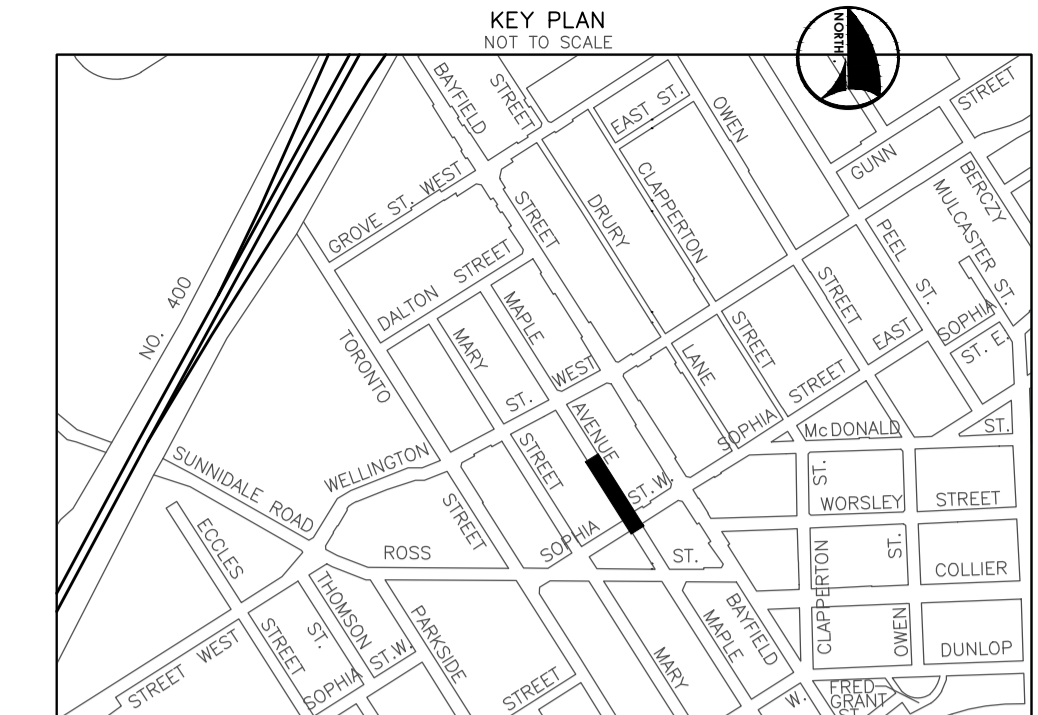
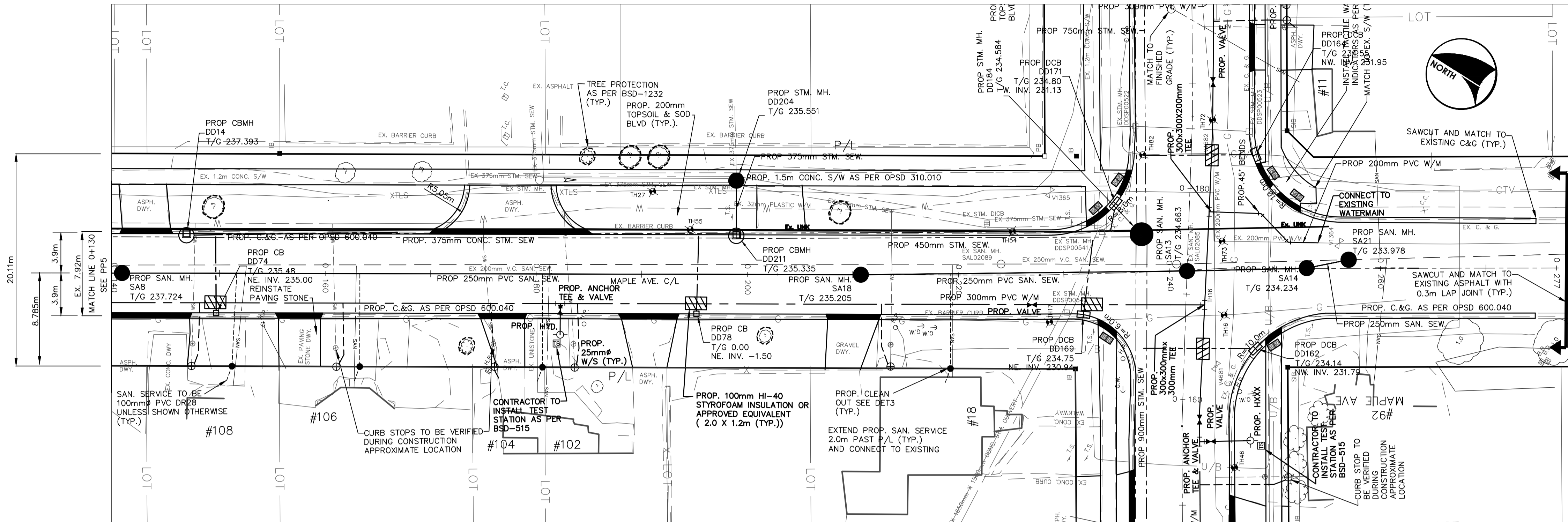
QUEEN'S PARK
NEIGHBOURHOOD RENEWAL
SOPHIA STREET WEST, MARY STREET,
AND MAPLE AVENUE
PLAN AND PROFILE - MAPLE AVENUE
STA. 0+000 TO STA. 0+130

Barrie
INFRASTRUCTURE DEPARTMENT

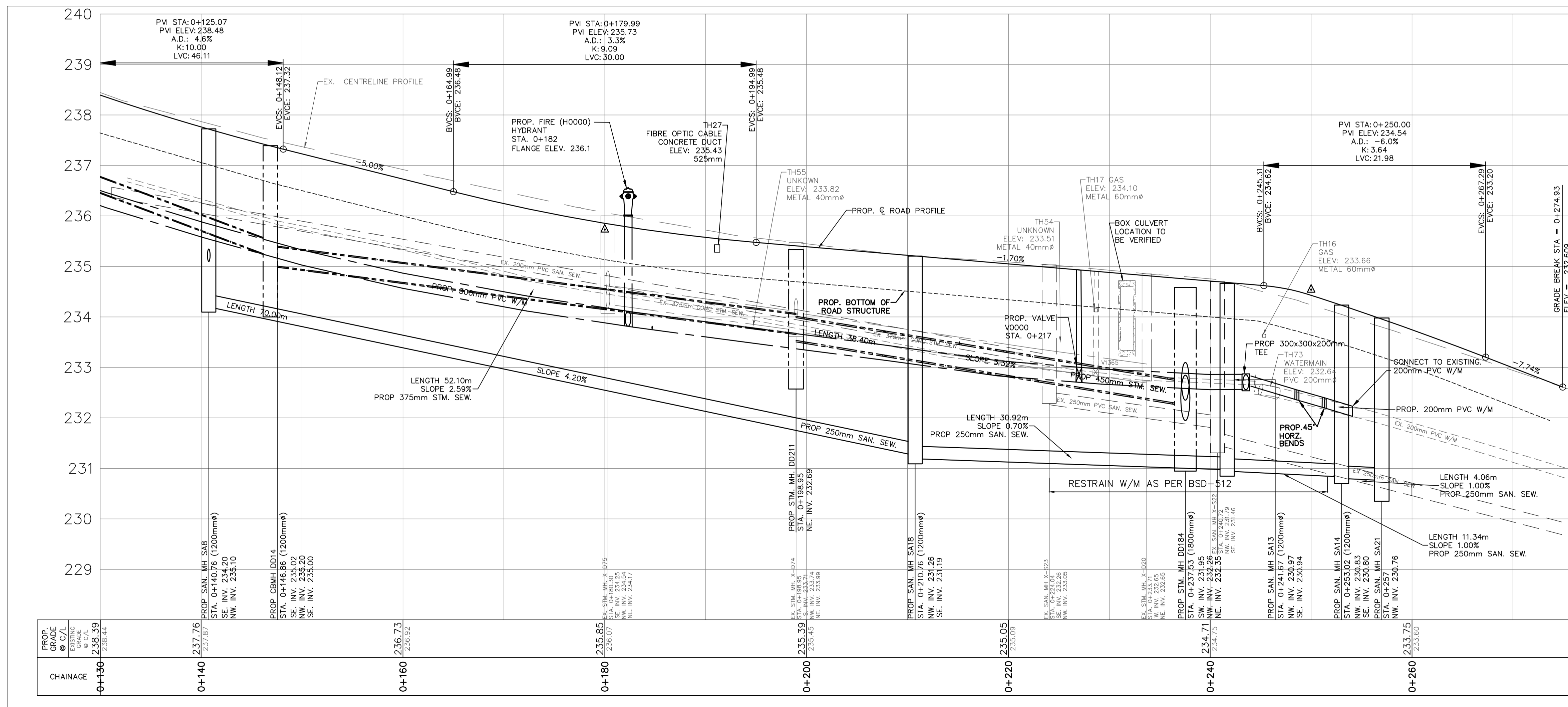
SCALE HOR. 1:250	VERT. 1:50	CONTRACT NO. 2021-000
DESIGN J.D.H.	DRAWN J.D.H.	SHEET NO. PP5
REVIEWED J.B.	DATE 2020.02.01	

MAPLE AVENUE

SOPHIA STREET WEST



SOPHIA STREET WEST



GENERAL NOTES
REFER TO CURRENT CITY OF BARRIE STANDARDS FOR APPLICABLE GENERAL NOTES.

BENCH MARKS DISTANCE NOTE
DISTANCES SHOWN HEREON ARE GROUND DISTANCES AND CAN BE CONVERTED TO GRID DISTANCES BY MULTIPLYING BY THE COMBINED SCALE FACTOR OF 0.9996884

BEARING NOTE
BEARINGS HEREIN ARE GRID BEARINGS AND ARE DERIVED FROM CONTROL MONUMENTS 03120040046 (N=4916082.773, E=603662.430) AND 01019804063 (N=4916487.812, E=604671.597), AND ARE REFERRED TO "THE CENTRAL MERIDIAN (81 DEGREES OF LONGITUDE)" IN ZONE 17 AND ARE BASED ON NAD83 (ORIGINAL), UTM COORDINATES

BENCH MARK V0011968U502
237.270 - COLLIER STREET UNITED CHURCH (FORMERLY WESLEYAN METHODIST CHURCH 1864), ON THE NORTH SIDE OF COLLIER STREET AND WEST OF POINTZ STREET, TABLET IN CENTRE OF FRONT OR SOUTH STONE FOUNDATION OF MOST WESTERLY COLUMN OF BELL TOWER, 150mm BELOW BRICK AND 330mm EAST OF COLUMN CORNER.

BENCH MARKS WILL BE FROM CITY OF BARRIE VERTICAL CONTROL NETWORK. INITIAL BENCH MARK TO BE OF 2nd ORDER ACCURACY

NO.	REVISIONS	DATE	APPROVED
1.	50% DESIGN	09.19.18	A.K.
2.	60% DESIGN	01.24.20	J.B.
3.	90% DESIGN	01.02.21	J.B.

CITY OF BARRIE ACCEPTED

DATE:

DIRECTOR OF INFRASTRUCTURE

QUEEN'S PARK NEIGHBOURHOOD RENEWAL
SOPHIA STREET WEST, MARY STREET, AND MAPLE AVENUE

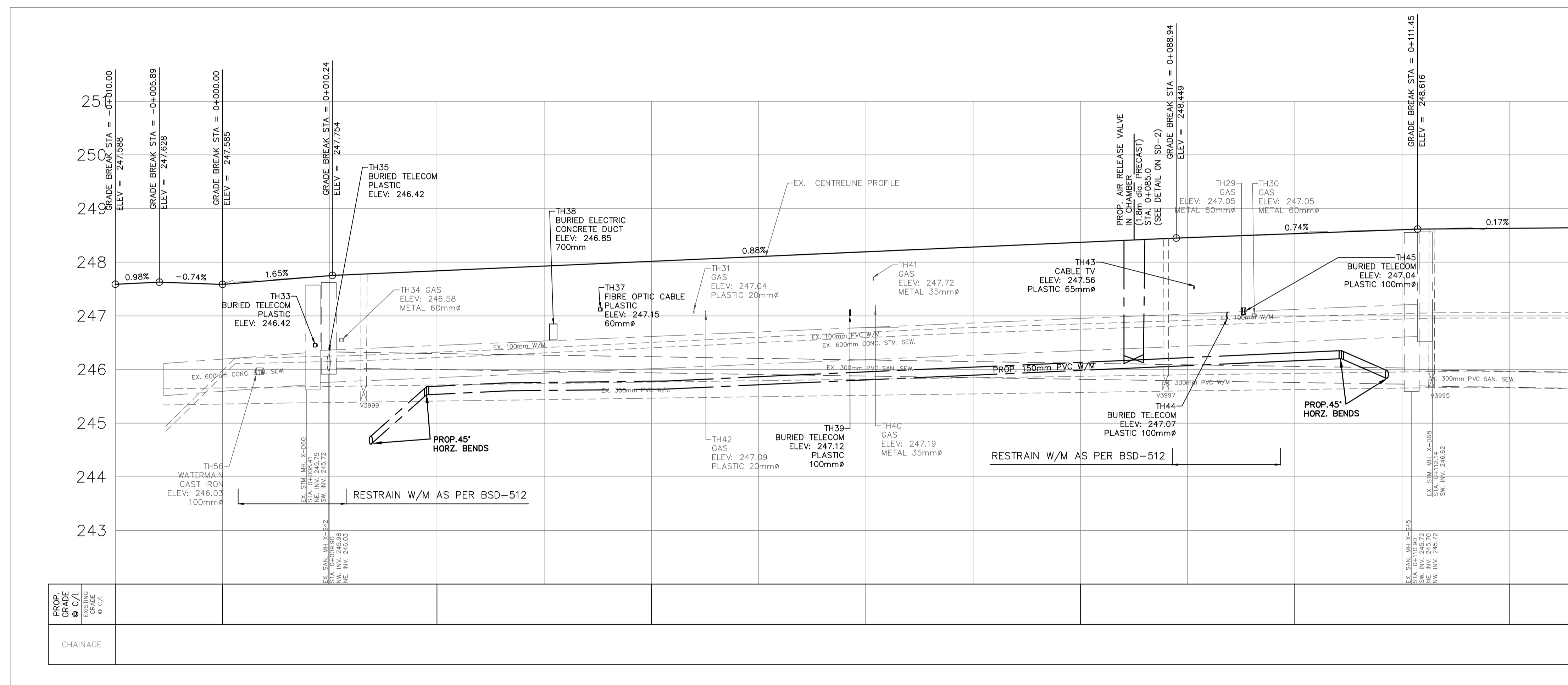
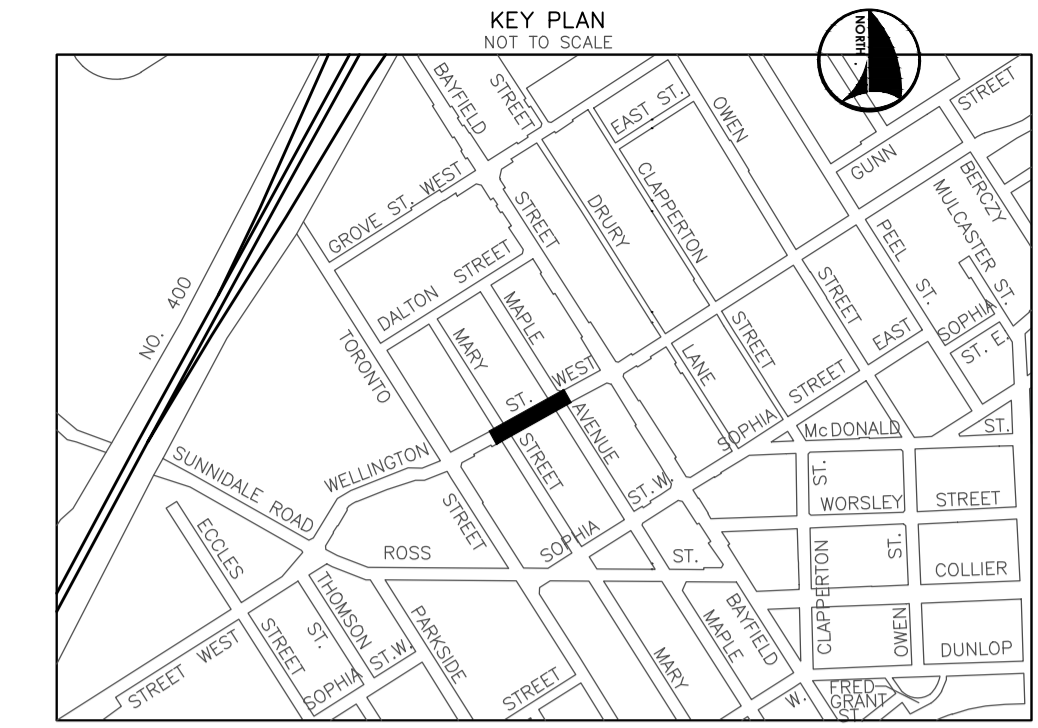
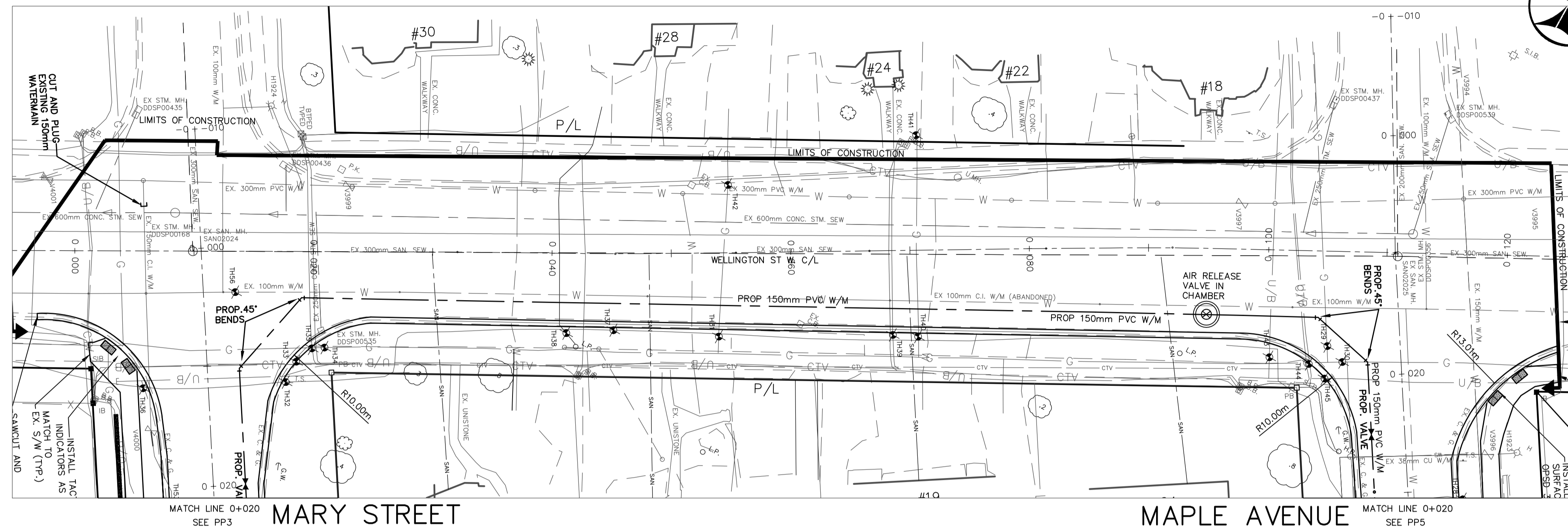
PLAN AND PROFILE - MAPLE AVENUE
STA. 0+130 TO STA. 0+240

Barrie
INFRASTRUCTURE DEPARTMENT

SCALE HOR. 1:250	VERT. 1:50	CONTRACT NO. 2021-000
DESIGN J.D.H.	DRAWN J.D.H.	SHEET NO. PP6
REVIEWED J.B.	DATE 2020.02.01	

3/14/2021 8:49 AM JAMES HUNT PROPOSED.DWG

WELLINGTON STREET WEST



GENERAL NOTES
REFER TO CURRENT CITY OF BARRIE STANDARDS FOR APPLICABLE GENERAL NOTES.

BENCH MARKS
DISTANCE NOTE
DISTANCES SHOWN HEREON ARE GROUND DISTANCES AND CAN BE CONVERTED TO GRID DISTANCES BY MULTIPLYING BY THE COMBINED SCALE FACTOR OF 0.9996884

BEARING NOTE
BEARINGS HEREIN ARE GRID BEARINGS AND ARE DERIVED FROM CONTROL MONUMENTS 03120040046 (N=4916082.773, E=602662.430) AND 0101980463 (N=4916487.812, E=604671.597), AND ARE REFERRED TO THE CENTRAL MERIDIAN (81 DEGREES OF LONGITUDE) IN ZONE 17 AND ARE BASED ON NAD83 (ORIGINAL), UTM COORDINATES

BENCH MARK V0011968U502
237.270 - COLLIER STREET UNITED CHURCH (FORMERLY WESLEYAN METHODIST CHURCH 1864), ON THE NORTH SIDE OF COLLIER STREET AND WEST OF POINTZ STREET, TABLET IN CENTRE OF FRONT OR SOUTH STONE FOUNDATION OF MOST WESTERLY COLUMN OF BELL TOWER, 150mm BELOW BRICK AND 330mm EAST OF COLUMN CORNER.

BENCH MARKS WILL BE FROM CITY OF BARRIE VERTICAL CONTROL NETWORK. INITIAL BENCH MARK TO BE OF 2nd ORDER ACCURACY

NO.	REVISIONS	DATE	APPROVED
1.	50% DESIGN	09.19.18	A.K.
2.	60% DESIGN	01.24.20	J.B.
3.	90% DESIGN	01.02.21	J.B.

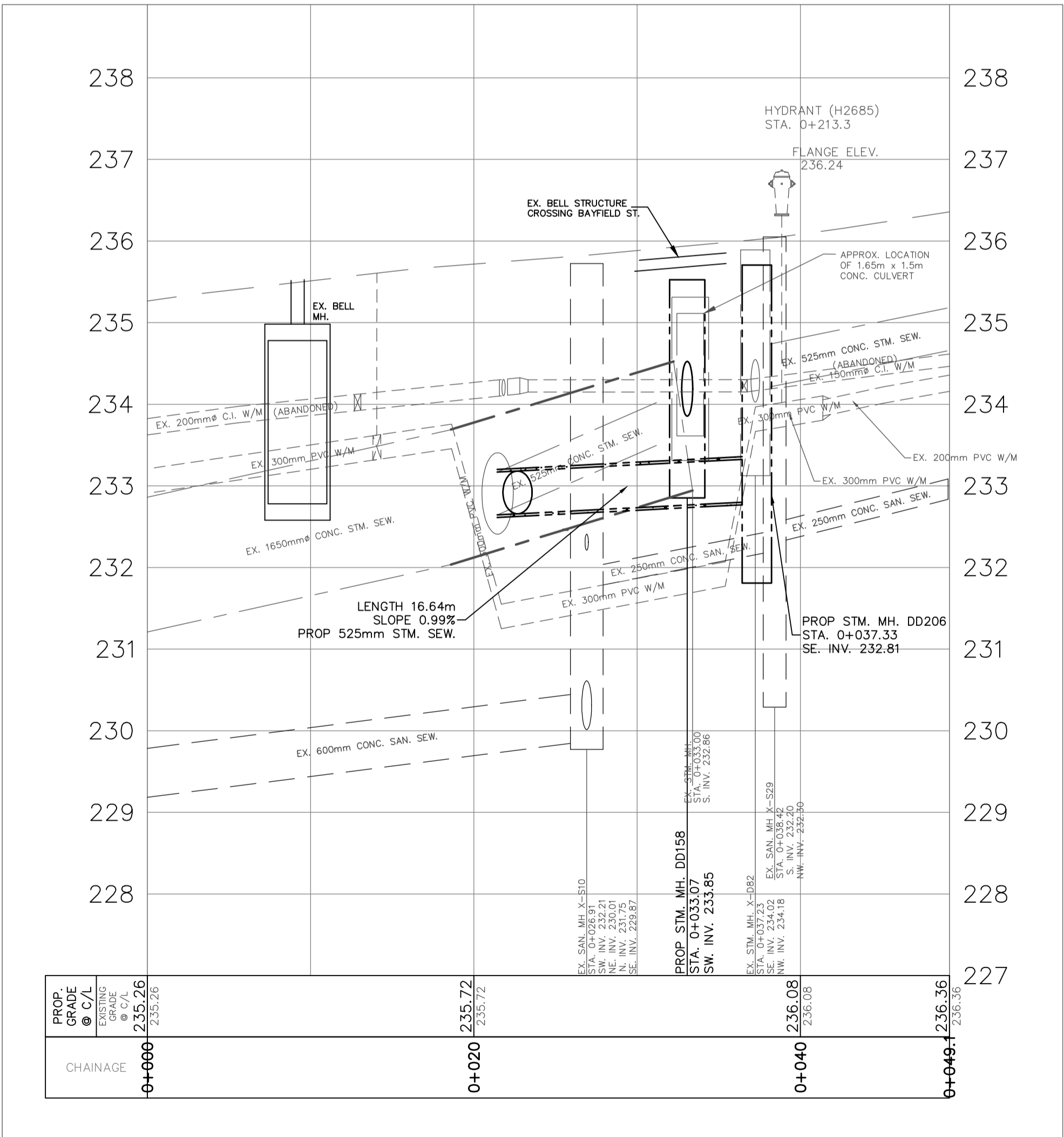
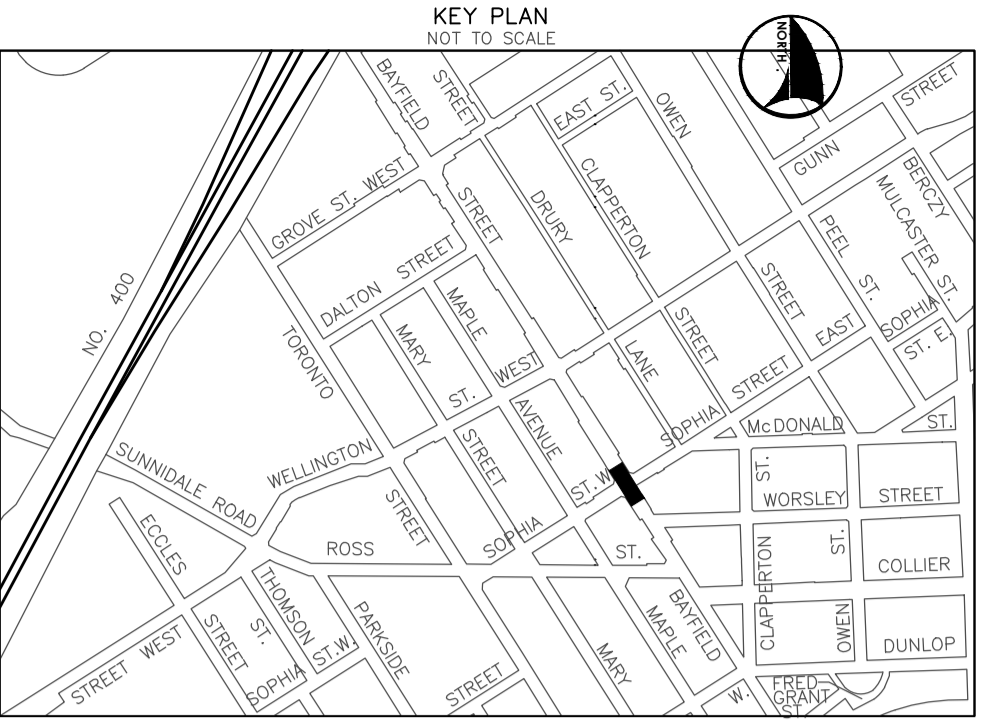
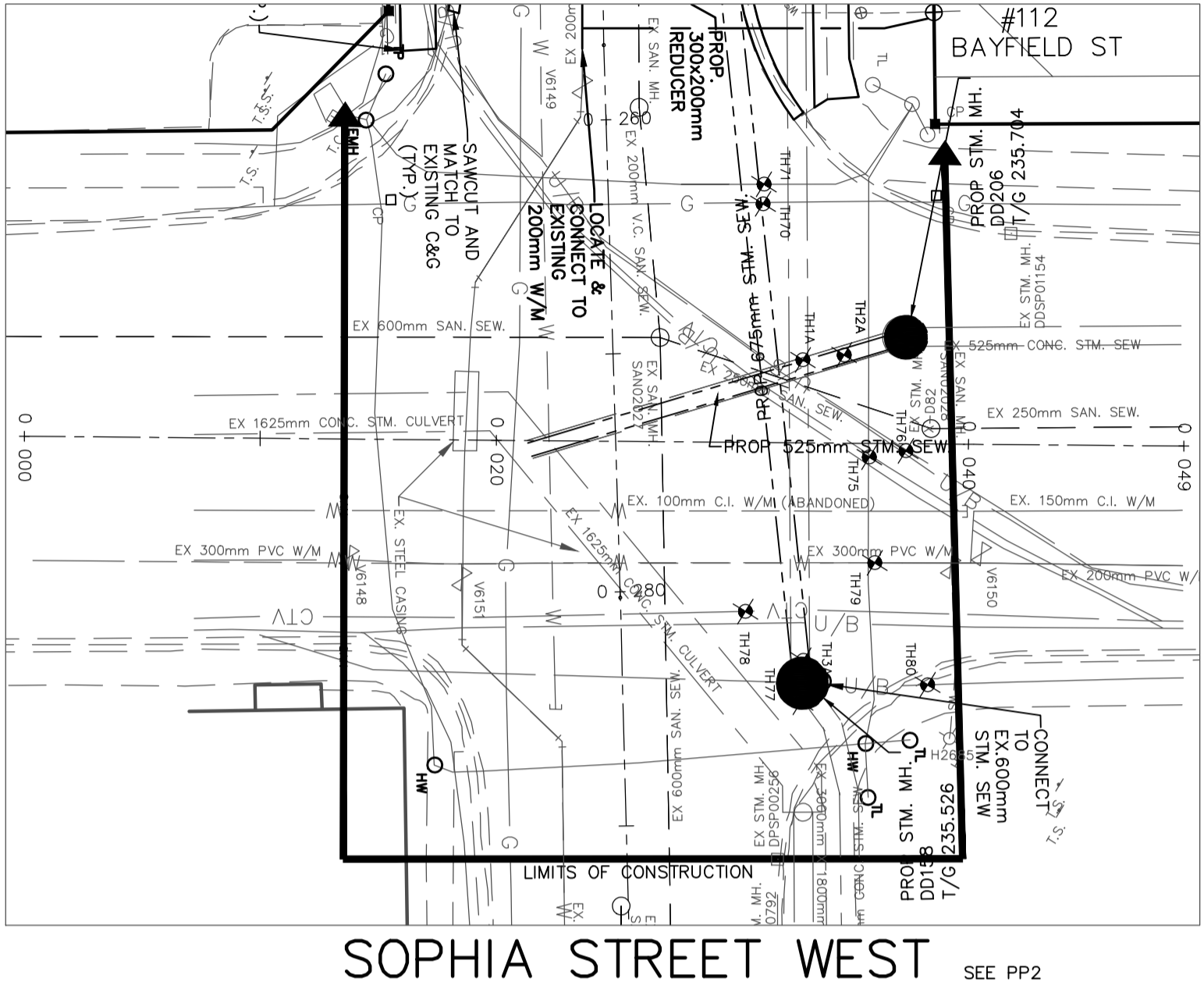
CITY OF BARRIE
ACCEPTED
DATE:
DIRECTOR OF INFRASTRUCTURE

QUEEN'S PARK
NEIGHBOURHOOD RENEWAL
SOPHIA STREET WEST, MARY STREET,
AND MAPLE AVENUE
PLAN AND PROFILE - WELLINGTON ST WEST
STA. 0+000 TO STA. 0+150

Barrie
INFRASTRUCTURE DEPARTMENT

SCALE HOR. 1:250	VERT. 1:50	CONTRACT NO. 2021-000
DESIGN J.D.H.	DRAWN J.D.H.	SHEET NO. PP7
REVIEWED J.B.	DATE 2020.02.01	

BAYFEILD STREET



GENERAL NOTES
REFER TO CURRENT CITY OF BARRIE STANDARDS FOR APPLICABLE GENERAL NOTES.

BENCH MARKS
DISTANCES SHOWN HEREON ARE GROUND DISTANCES AND CAN BE CONVERTED TO GRID DISTANCES BY MULTIPLYING BY THE COMBINED SCALE FACTOR OF 0.9996884

BEARING NOTE
BEARINGS HEREIN ARE GRID BEARINGS AND ARE DERIVED FROM CONTROL MONUMENTS 03120040046 (N=4916082.773, E=603662.430) AND 0101980463 (N=4916487.812, E=604671.597), AND ARE REFERRED TO THE CENTRAL MERIDIAN (81 DEGREES OF LONGITUDE), IN ZONE 17 AND ARE BASED ON NAD83 (ORIGINAL), UTM COORDINATES

BENCH MARK V0011968U502
237.270 - COLLIER STREET UNITED CHURCH (FORMERLY WESLEYAN METHODIST CHURCH 1864), ON THE NORTH SIDE OF COLLIER STREET AND WEST OF POINTZ STREET, TABLET IN CENTRE OF FRONT OR SOUTH STONE FOUNDATION OF MOST WESTERLY COLUMN OF BELL TOWER, 150mm BELOW BRICK AND 330mm EAST OF COLUMN CORNER.

BENCH MARKS WILL BE FROM CITY OF BARRIE VERTICAL CONTROL NETWORK. INITIAL BENCH MARK TO BE OF 2nd ORDER ACCURACY

NO.	REVISIONS	DATE	APPROVED
1.	50% DESIGN	09.19.18	A.K.
2.	60% DESIGN	01.24.20	J.B.
3.	90% DESIGN	01.02.21	J.B.

CITY OF BARRIE
ACCEPTED
DATE:
DIRECTOR OF INFRASTRUCTURE

QUEEN'S PARK NEIGHBOURHOOD RENEWAL
SOPHIA STREET WEST, MARY STREET, AND MAPLE AVENUE
PLAN AND PROFILE - BAYFEILD STREET
STA. 0+000 TO STA. 0+049

Barrie
INFRASTRUCTURE DEPARTMENT

SCALE HOR. 1:250	VERT. 1:50	CONTRACT NO. 2021-000
DESIGN J.D.H.	DRAWN J.D.H.	SHEET NO. PP8
REVIEWED J.B.	DATE 2020.02.01	