



TO: GENERAL COMMITTEE

SUBJECT: NO PARKING ANYTIME – MAPLETON AVENUE

WARD: 6

PREPARED BY AND KEY CONTACT: M. KAVECKAS, SENIOR TRANSPORTATION OPERATIONS TECHNOLOGIST, EXT. 4876

SUBMITTED BY: M. BANFIELD, RPP, DIRECTOR OF DEVELOPMENT SERVICES

GENERAL MANAGER APPROVAL: B. ARANIYASUNDARAN, P.ENG., PMP GENERAL MANAGER OF INFRASTRUCTURE AND GROWTH MANAGEMENT

CHIEF ADMINISTRATIVE OFFICER APPROVAL: M. PROWSE, CHIEF ADMINISTRATIVE OFFICER

RECOMMENDED MOTION

1. That Traffic By-law 2020-107, Schedule '1', "No Parking Anytime" be amended by adding the following:

Mapleton Avenue East side from Batteaux Street/Silvercreek Crescent to a point 70 metres south thereof.

PURPOSE & BACKGROUND

2. Staff in the Development Services Department have received a request to investigate the feasibility to further restrict No Parking Anytime on Mapleton Avenue and report back to General Committee.
3. Mapleton Avenue is a two-lane major collector with an Average Annual Daily Traffic of 5,400 vehicles. On Mapleton Avenue south of Batteaux Street/Silvercreek Crescent there is a designated left-turn lane for northbound traffic and single-family homes with driveways on both sides of the street. North of Batteaux Street there is Batteaux Park and St. Joan of Arc Catholic Highschool with a two-way left turn lane to Ardagh Road. Please refer to Appendix "A" for a map of the area.
4. Currently, there is No Stopping Anytime from Ardagh Road to Batteaux Street/Silvercreek Crescent and No Parking Anytime corner restriction on the west side of Mapleton Avenue, 26 metres south of Batteaux Street/Silvercreek Crescent. The No Parking Anytime restriction was installed under the Traffic By-law's general provisions. Outside of this restriction, parking is permitted along both sides of Mapleton Avenue south of Batteaux Street/Silvercreek Crescent. Overnight on-street parking is prohibited December 1 to March 31 between 12:01 a.m. and 7:00 a.m. for winter maintenance activities.

ANALYSIS

5. Staff performed preliminary site investigations and during these investigations, vehicles were observed parking in permitted zones past the 26 metre No Parking Anytime corner restriction on Mapleton Avenue. The parked vehicles near the left-turn lane creates inadequate lane widths and requires motorists travelling southbound to maneuver around the parked vehicles and encroach into the northbound left-turn lane.

6. A questionnaire was prepared with Staff's proposed recommendation of extending the current No Parking Anytime restriction from 26 metres south of Batteaux Street/Silvercreek Crescent to 70 metres south of Batteaux Street/Silvercreek Crescent. The questionnaire was mailed to 14 property owners on Mapleton Avenue. One (1) response was received. The results of the questionnaire are as follows.

MAPLETON AVENUE ON-STREET PARKING SURVEY	RESPONSES RECEIVED IN FAVOUR	PERCENTAGE OF RESPONSES
Option "A" – Maintain the current on-street parking on Mapleton Avenue	1	100%
Option "B" – No Parking Anytime on the west side of Mapleton Avenue from Batteaux Street/Silvercreek Crescent to a point 70 metres south thereof.	0	0%
<u>Total (Out of 14)</u>	1	7%

7. The property owner who was not in favour of Staff's recommendation cited concerns that they did not want to lose on-street parking on Mapleton Avenue.
8. Staff have taken this into consideration when making the recommendation of only restricting the west side for 70 metres south from Batteaux Street/Silvercreek Crescent. This will restrict parking where a conflict with the left-turn lane can occur but still allow for on-street parking on Mapleton Avenue where safe to do so.
9. Based on site investigations and results from the questionnaire, Staff recommend that the following amendments are to be made to the Traffic By-law.

That Traffic By-law 2020-107, Schedule '1', "No Parking Anytime", be amended by adding the following:

Mapleton Avenue East side from Batteaux Street/Silvercreek Crescent to a point 70 metres south thereof.

10. Barrie Police Service, Barrie Fire and Emergency Service and Municipal Law Enforcement Staff do not oppose the recommendation.

ENVIRONMENTAL AND CLIMATE CHANGE IMPACT MATTERS

11. There are no environmental and climate change impacts related to the recommendation.

ALTERNATIVES

12. The following alternative is available for consideration by General Committee:

Alternative #1

General Committee could maintain the existing Traffic By-law 2020-107 Schedule '1', "No Parking Anytime". (i.e., Status Quo)

This alternative is not recommended as it has been identified by Staff that there is a potential conflict with southbound travelling vehicles manoeuvring over the centreline of the northbound left-turn lane to avoid vehicles parked on Mapleton Avenue.

FINANCIAL

13. The costs associated with the installation of "No Parking Anytime" signs are approximately \$300 and can be accommodated in the 2023 Operating Budget.

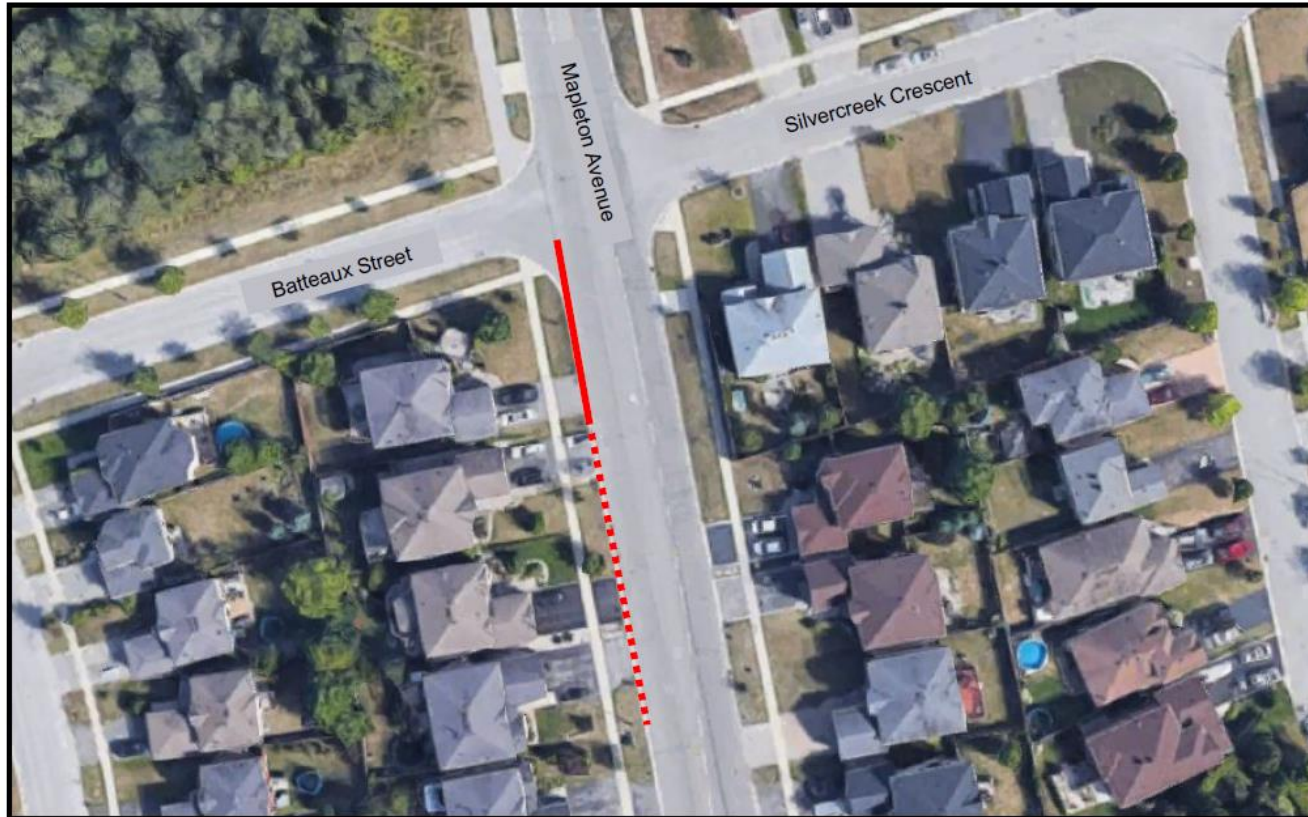
LINKAGE TO 2022–2026 STRATEGIC PLAN

14. The recommendation included in this Staff Report supports the following goal identified in the 2022-2026 Strategic Plan:
- Community Safety – Address speeding and aggressive driving to ensure street and pedestrian safety.
15. The recommendation of amending the "No Parking Anytime" Traffic By-law to further restrict parking on the west side of Mapleton Avenue will improve safety for motorists and pedestrians by maintaining adequate lane widths. The recommendation also provides permitted on-street parking in areas where Staff feel it is safe to do so. This prioritizes Councils goal of creating safer streets.

Attached: Appendix "A" – No Parking Anytime – Mapleton Avenue

APPENDIX "A"

NO PARKING ANYTIME – MAPLETON AVENUE



	No Parking Anytime		Ward: 6	
	Mapleton Avenue		Design: MK	
	 Existing No Parking	 Proposed No Parking	Date: July 2023	