



BY-LAW NUMBER 2017-

A By-law of The Corporation of the City of Barrie to accept the “as-constructed” municipal services within and complementary to a portion of the Auburn Development Inc. – Meadows of Bear Creek Plan of Subdivision (Phase II) Registered as Plan 51M-1002 and to assume the streets within this plan of subdivision for public use.

WHEREAS Section 10 of *The Municipal Act, 2001*, S.O. 2001, c.25 as amended (the “Municipal Act, 2001”), provides that a single-tier municipality may pass by-laws respecting matters set out therein including, inter alia public assets of the municipality acquired for the purpose of exercising its authority under *The Municipal Act, 2001* or any other Act;

AND WHEREAS The Council of The Corporation of the City of Barrie deems it expedient to assume Marta Crescent within the limits of the Meadows of Bear Creek Subdivision (Phase II) on Plan 51M-1002, in the City of Barrie, County of Simcoe as shown on Schedule “A” attached;

AND WHEREAS The Council of The Corporation of the City of Barrie passed Motion 11-G-276 delegating authority to the Director of Engineering to accept the municipal infrastructure within Plans of Subdivision;

NOW THEREFORE, the Council of The Corporation of the City of Barrie enacts as follows:

1. **THAT** Marta Crescent within the limits of the Meadows of Bear Creek Subdivision (Phase II) on Plan 51M-1002, as shown on Schedule “A” attached be assumed for public use.
2. **THAT** the “as-constructed” municipal services within and complementary to a portion of the Auburn Development Inc. – Meadows of Bear Creek Plan of Subdivision (Phase II) Registered as Plan 51M-1002 as shown on Schedule “A” attached be accepted.
3. **THAT** this By-law shall come into force and have effect immediately upon the final passing thereof.

READ a first and second time this 15th day of May, 2017.

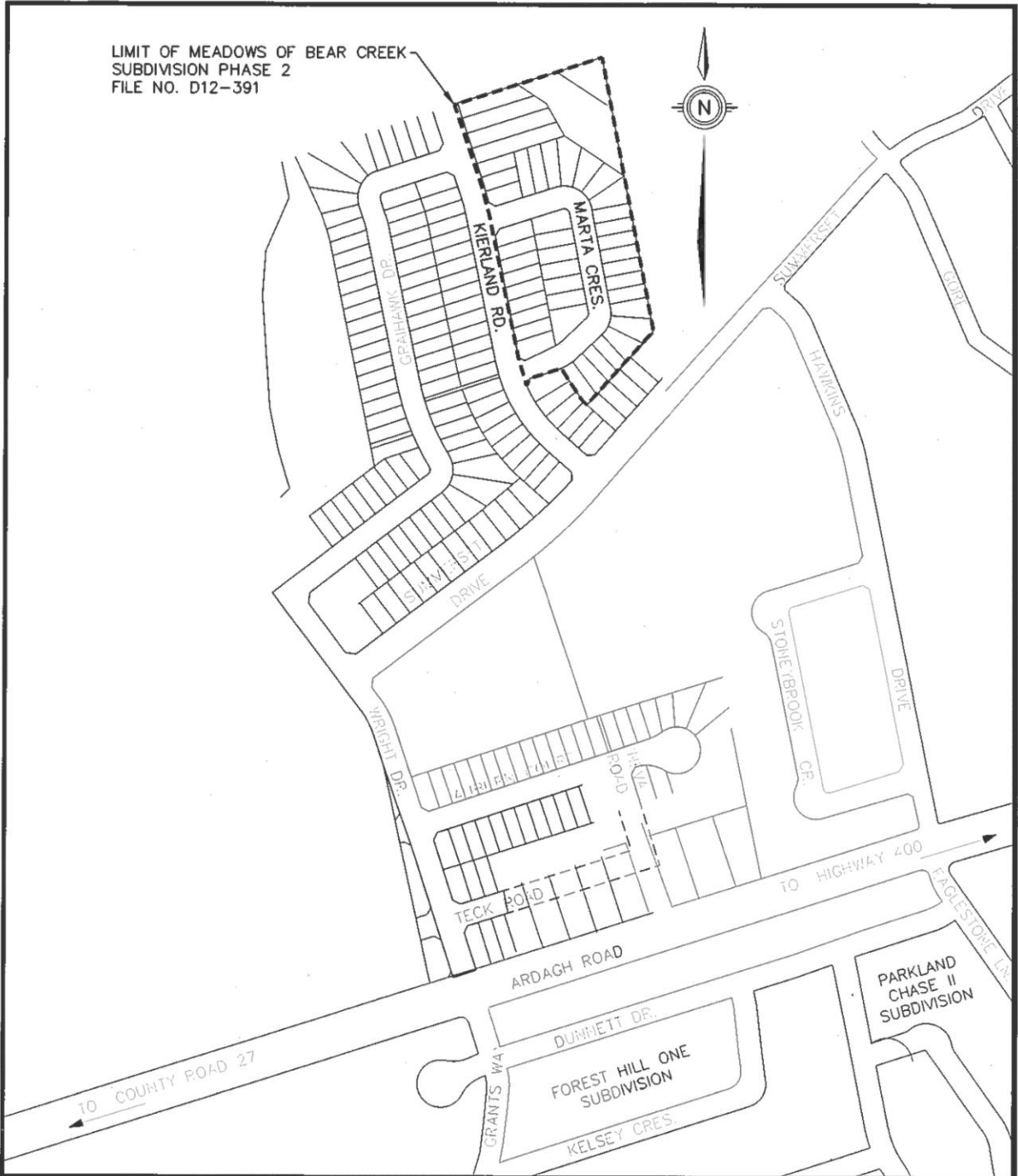
READ a third time and finally passed this 15th day of May, 2017.

THE CORPORATION OF THE CITY OF BARRIE

MAYOR – J.R. LEHMAN

CITY CLERK – DAWN A. MCALPINE

Schedule "A"



LIMIT OF MEADOWS OF BEAR CREEK
SUBDIVISION PHASE 2
FILE NO. D12-391

project:
MEADOWS OF BEAR CREEK SUBDIVISION
FILE NO. D12-391

title:
LOCATION PLAN

WALTER FEDY

scale: N.T.S.	drawn by: MV
date: FEB/16/16	checked by:
job no.: 2003-0488-28	

sheet no.:
SKA-1

Copyright © 2016 WalterFedy

Part of Dwg:	Rev. #:	Issued For:
--------------	---------	-------------

CAD file: Bear Creek Key Plan - Phase 2