



GEORGIAN

UNIVERSITY  
PARTNERSHIP  
CENTRE

EXPANDING  
degree capacity



We will build  
on our strong  
foundation to  
create the  
campus of  
the future...  
**TODAY**

# Georgian is Barrie's postsecondary leader

- Georgian College has proudly served Barrie since **1967**
- What started here has grown to **7** campuses across Central Ontario
- **11,000** full-time students - 8,600 in Barrie
- **1,700** faculty and staff
- **120+** full-time programs
- **6,200** co-op employers
- **900** International students
- **60,000** alumni – **20,000** live and work locally





# Georgian University Partnership Centre

- Today it is home to **1,550** degree students
- **7** university partners
  - Central Michigan, Lakehead, Laurentian, Nipissing, UOIT, Windsor, York\*
- **14** degree programs

# Recent history

- Uncertainty about satellite campus policy
- Moratorium on launching new degree programs while political decisions were made
- New Liberal majority government - established postsecondary policies



# The opportunity

## Major capacity expansion checklist

- University-College collaboration
- Potential for long-term enrolment growth
- Credential mix of programs
- Assessed impact on nearby institutions – are they supportive?
- Supported by local municipality/region
- Innovative service delivery
- Affordability for the province and students





# Our vision for the future

- Doers, thinkers, leaders
- Best of college and university education
- Integrated degrees/diplomas
- Community of scholars
- Applied research, entrepreneurship and business incubation
- We will grow together to offer more than 50 degree programs to more than 6,000 students by 2030

# Lakehead University

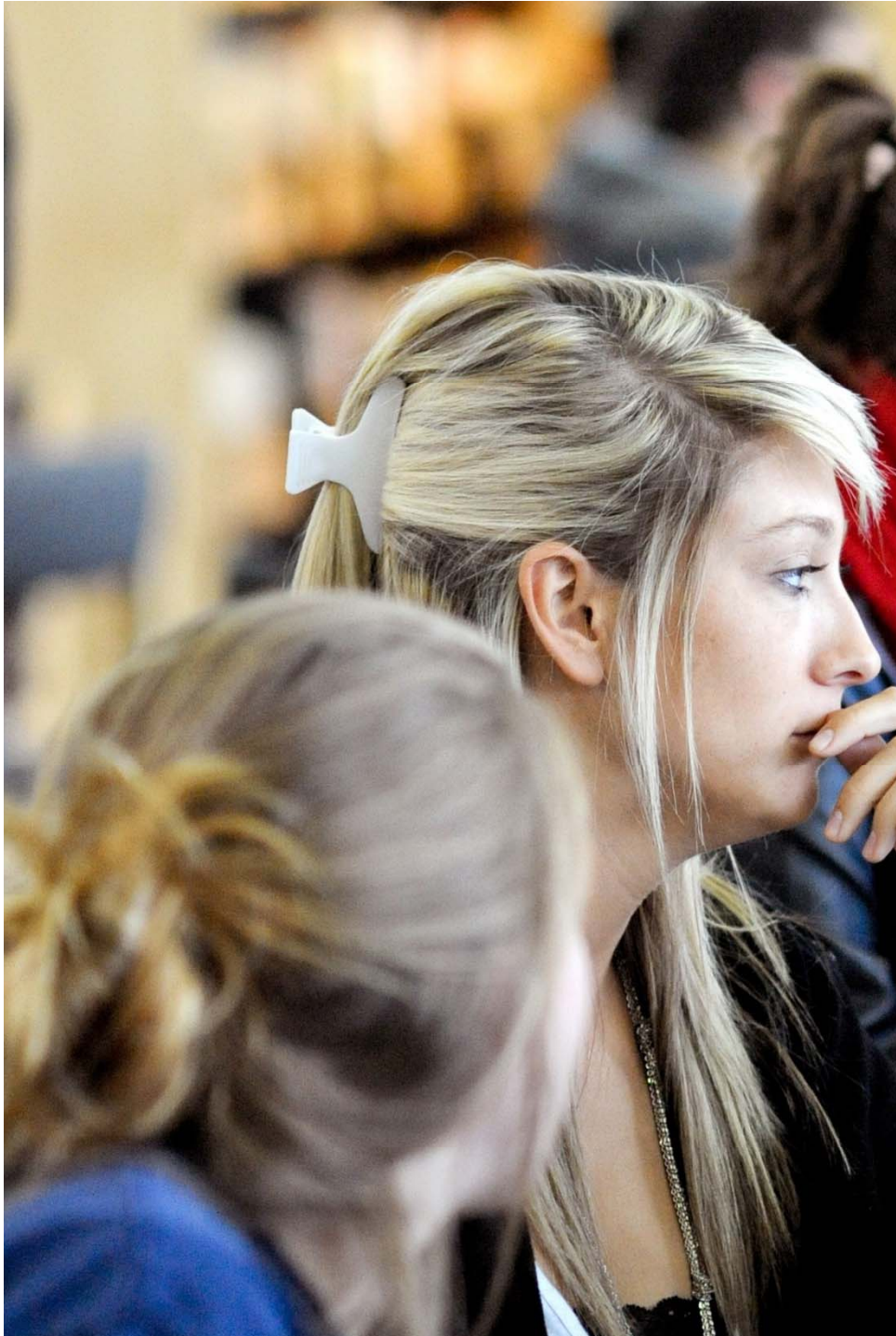
- Established - 1965
- Established in Orillia - 2006
- 1,430 Orillia students
- 14 Orillia degree programs



Lakehead  
UNIVERSITY







# The strength of our proposal

- Builds on our foundation
- Fully leverages existing infrastructure and resources in state-of-the-art facilities
- Technology facilitates greater enrolment
- Effective, efficient use of government funding

# Existing facilities

- Library learning commons
- Residence buildings, Athletic centres, Student service hubs
- Restaurants and food outlets
- Current value
  - Georgian Barrie - \$470 million
    - 111 acres
  - Lakehead Orillia - \$70 million
    - 85 acres





## Realistic and achievable

- Currently 1,550 degree students in University Partnership Centre
- 1,430 degree students at Lakehead Orillia
- Room to add 1,200 students on Georgian Barrie campus
- Room to add 800 students at Lakehead Orillia
- Our plan accommodates a quick-start for up to **2,000 new degree students**

## Downtown Barrie

- Connect 1,000 students and faculty to Barrie's vibrant business and cultural scene
  - Move 600 Design and Visual Arts students downtown
  - Add 400 new degree students
  - Entrepreneurship hub and business incubator





# Engineering building

- New Lakehead-Georgian engineering building on Barrie campus
- Market-driven, student-focused engineering degrees and diplomas
- 600 new engineering degree students

# Increasing degree access for Central Ontario students



## BARRIE - GEORGIAN CAMPUS

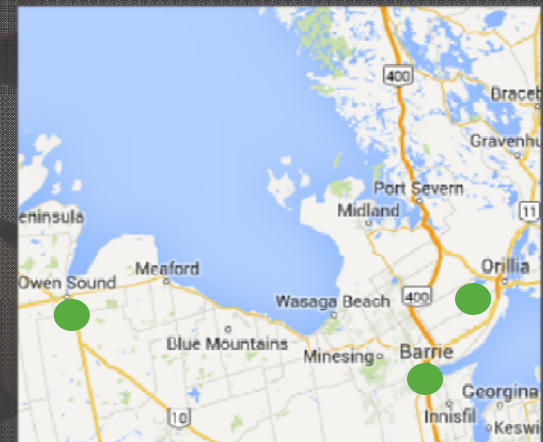
- Business - Automotive Management
- Business - Golf Management
- Business - Health Management
- Counselling Psychology
- Hospitality and Tourism
- Interdisciplinary Studies
- Nursing (TBC)
- Technology
- Electrical Engineering
- Environmental Studies
- Mechanical Engineering
- Software Engineering
- Civil Engineering
- Science Degree – General
- Interior Design
- Visual/Fine Arts
- Business - Management and Leadership

## ORILLIA

- Human Services Police Studies
- Health Technology Systems
- Gerontology
- Hon. Environment Management
- Aboriginal Language

## OWEN SOUND

- Marine





# Economic Impact

## Economic benefit of Georgian College and University Partnership Centre

- 2014 – Barrie and area \$157 M  
Central Ontario \$361 M
- 2030 – Barrie and area \$223 M  
Central Ontario \$466 M



# Our vision supports Barrie's vision

- Local 'mind' and management
- Cultural and business benefits of Design and Visual Arts downtown
- Entrepreneurship hub and business incubator
- Differentiated engineering degrees
- Four-year nursing degrees to support local health care employment
- Fully leverages existing investments from this community



# We need your support

- We are seeking your letter of support to accompany our Major Capacity Expansion submission to the Ministry of Training, Colleges and Universities

