



SouthWestern Integrated Fibre Technology

Barrie Council
Barrie, ON

swiftnetwork.ca

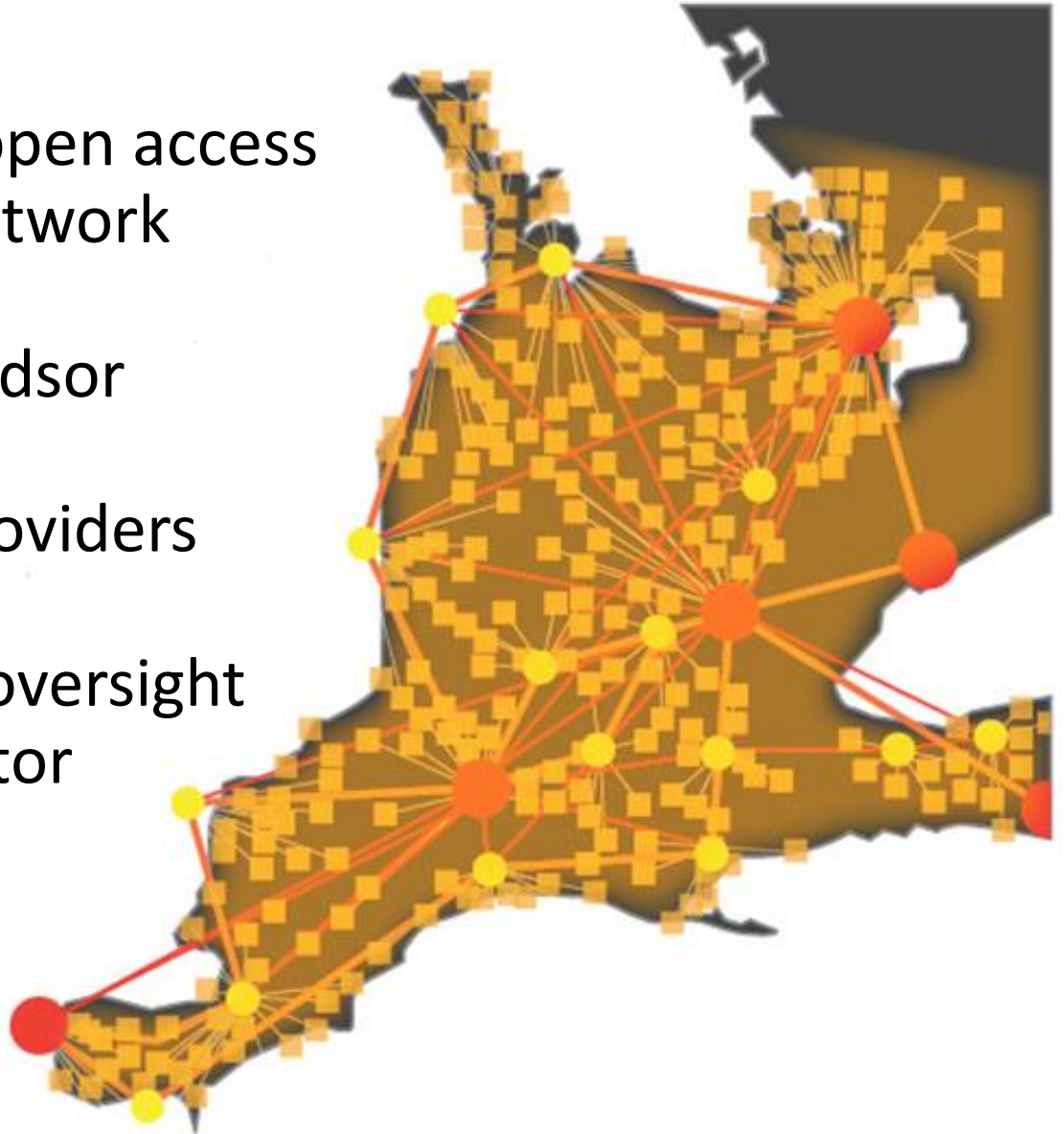
facebook.com/networkswift

twitter.com/networkswift

May 9, 2016

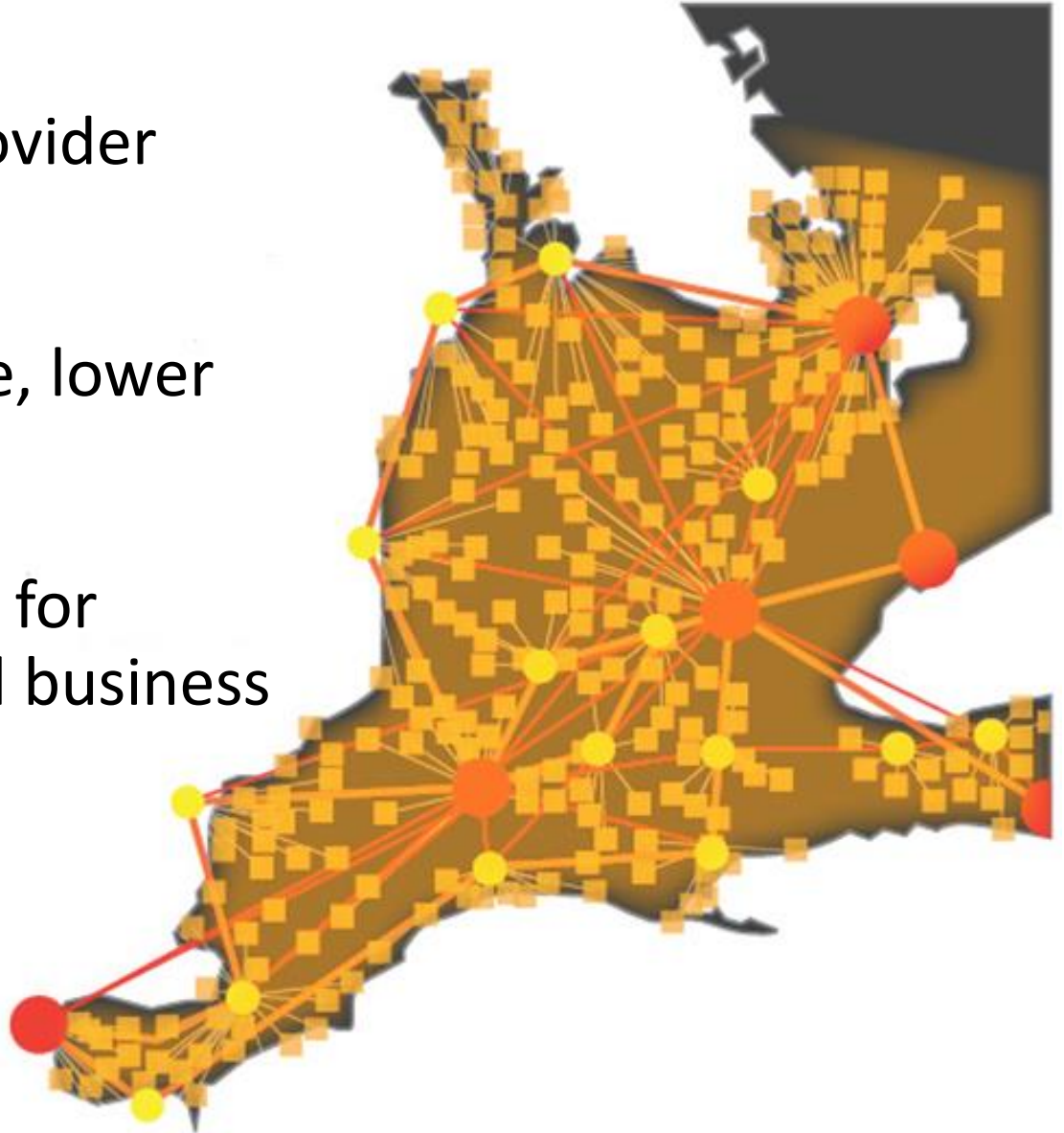
SWIFT – What Is It?

- Ubiquitous, open access fibre optic network
- Orillia to Windsor
- Owned by providers
- Subsidy and oversight by public sector



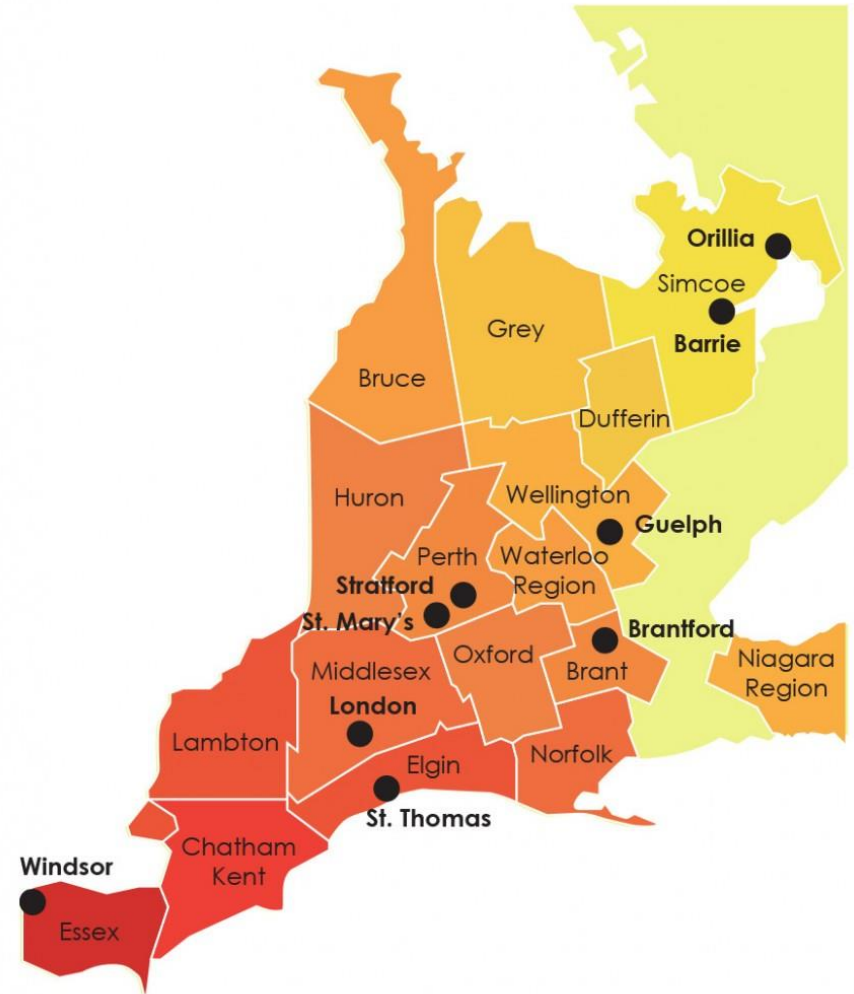
SWIFT – What Does it Mean?

- Increased provider competition
- Better service, lower rates
- Better access for residents and business
- Globally competitive



SWIFT - Stakeholders

- WOWC Caucus - 14 Counties and Chatham-Kent
- Region of Niagara, Town of Caledon, City of Stratford, City of Orillia, Grey Bruce Health Services, SCAN and Georgian College have joined with a financial contribution
- Region of Waterloo is part of the feasibility study
- In discussion with 7 other separated municipalities of Barrie, Brantford, Guelph, London, St. Mary's, St. Thomas and Windsor
- LDCC, Chippewa's of the Thames First Nation and Walpole Island First Nation support SWIFT.
- Other partners are educational institutions, healthcare organizations, First Nations, private sector enterprises



WOWC's Mission:

"enhance the prosperity and overall well being of our communities"

SW Ontario & Niagara has ~3.5 Million people – ~10% of Canada's population



SWIFT Board of Directors

- Gerry Marshall (Simcoe County Warden)
Chair
- Mitch Twolan (Bruce County Warden)
- Randy Hope (Chatham-Kent Mayor)
- George Bridge (Wellington County Warden)
- Jim Maudsley (Middlesex County Warden)
- Roger Watt (Huron County Councillor)
- Bev MacDougal (Lambton County Warden)
- David Mayberry (Oxford County Warden)
- Harry Schlange (Niagara Region CAO)
- Armando Narvali (Town of Caledon IT Manager)

- 5 non-municipal positions still to be filled



SWIFT Advisory Committee

- Sonya Pritchard, CAO, Dufferin County
- Geoff Hogan, Director of IT, Grey County
- Mike Morgan, IT Manager, Waterloo Region District School Board
- Helen Hambly, Associate Professor, School of Environmental Design and Rural Development, University of Guelph
- Lance Thurston, President & CEO, Grey Bruce Health Services
- Steve Benoit, Manager - Media Services & Network Communications Infrastructure, Georgian College
- Stuart Hendrie, CIO, Niagara Region
- Jennifer Whiteye, Southern First Nations Secretariat, London District Chief's Council



History

| Milestone | Dates |
|--|--------------------|
| Presentation to caucus on broadband including EOWC's EORN project | May 6, 2011 |
| Contract awarded for feasibility study to CPC | September 14, 2012 |
| Feasibility study adopted, budget set (\$350K) | October 18, 2013 |
| Stakeholder consultations | |
| SCF funding application submitted | December 19, 2014 |
| Minister's letter received | April 2, 2015 |
| http://www.r2b2project.ca/ funded by OMAFRA to study economic broadband impact (Helen Hambly, University of Guelph) | April 24, 2015 |
| Very positive 3 rd Party (Dr. Rajabiun) review validating project | July 28, 2015 |
| Southwestern Integrated Fibre Technology Inc. incorporated | November 12, 2015 |



SouthWestern Integrated Fibre Technology

CONTEXT FOR THE PROJECT

The New Reality

Respect your parents! They had to do their homework without Google.



som^{ee}cards
user card

Job Loss in Traditional Industry

THE GLOBE AND MAIL

Search | News & Quotes | Jobs

Enter a term, stock symbol or company name

Home News Opinion Business Investing Sports Life Arts Tech
Streetwise Economy International Industry News Small Business Comments

Try Globe Unlimited - 1 month for just 99¢

Home » Report on Business



Caterpillar closing Toronto plant, 330 employees to lose jobs

TORONTO — The Canadian Press
Published Saturday, May 04 2013, 12:45 PM EDT
Last updated Saturday, May 04 2013, 2:00 PM EDT

Progress Rail closing London plant

Hank Daniszewski and John Miner, The London Free Press
Saturday, February 4, 2012 11:21:18 EST AM

PLANT CLOSURE

Hundreds losing jobs as Kellogg's closing London plant

576



By Hank Daniszewski, The London Free Press
Wednesday, December 11, 2013 9:16:02 EST AM

(560 jobs)

740 jobs lost as ketchup maker closes Leamington plant

199

By Jonathan Sher, Jane Sims, Bob Boughner, QMIAgency
Friday, November 15, 2013 11:36:02 EST AM

Ford Canada set to close St. Thomas plant as election looms

When provincial political leaders go to St. Thomas during this fall's election they will see first-hand the economic struggle that lies ahead.

(1200 jobs)

BlackBerry Layoffs Leave Waterloo Scrambling For New Sources Of Jobs

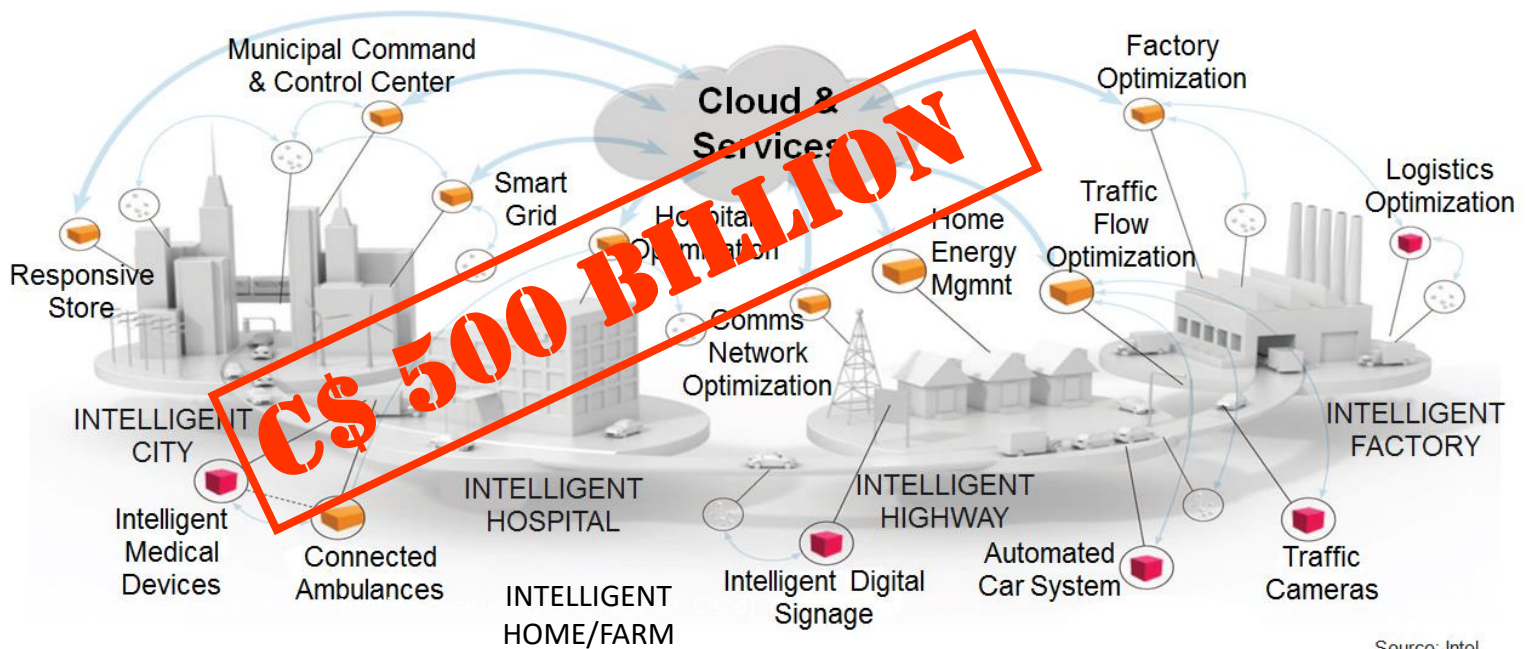
CP | By David Friend, The Canadian Press
Posted: 11/14/2013 6:37 pm EST | Updated: 01/23/2014 6:50 pm EST

(4,500 jobs)

The Internet of Things – Big Data



Regional digital infrastructure enables apps



Source: Intel

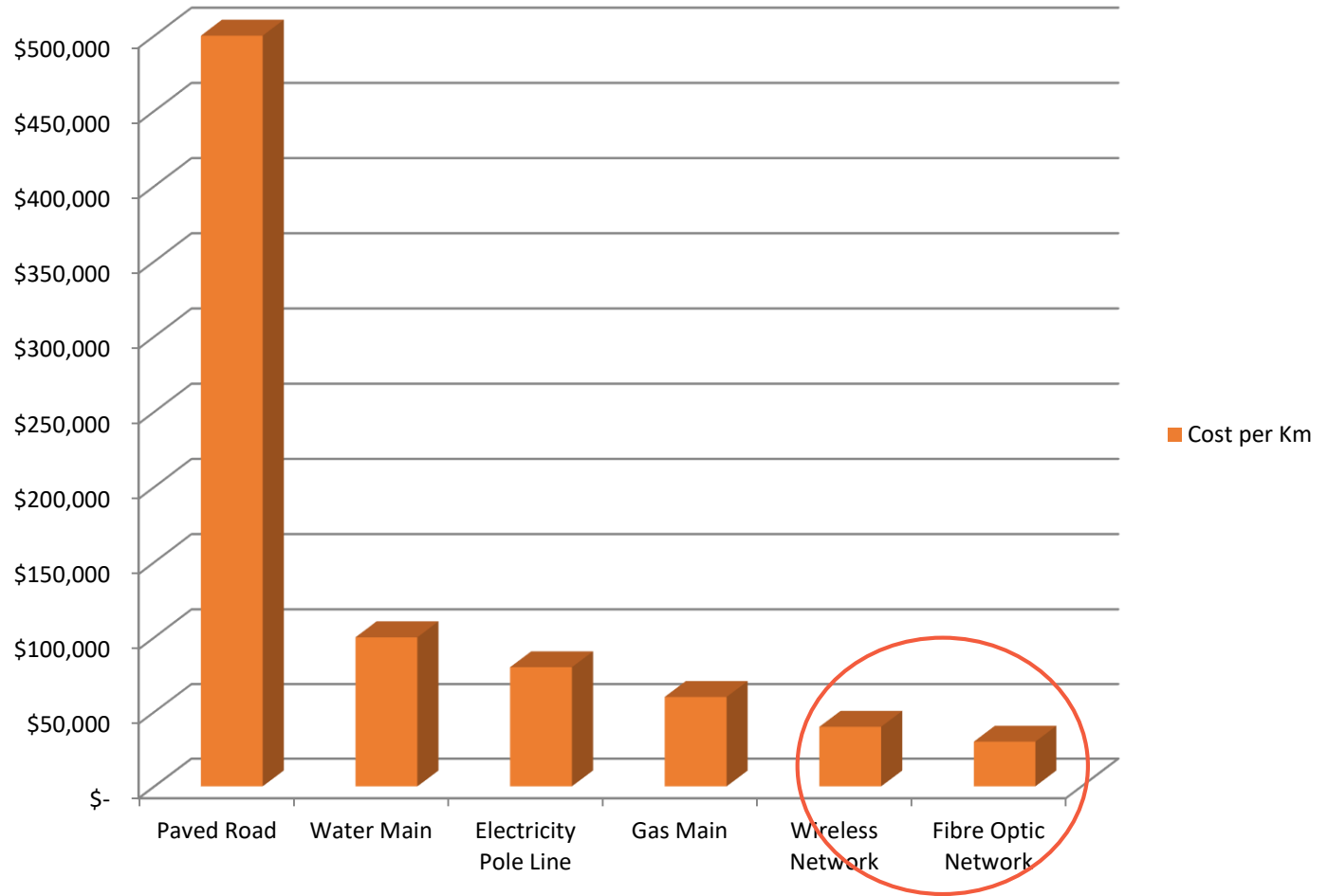
“The digital foundation and plumbing for applications are needed to enable 21st century applications, economies and societies.”

(Source: ITU)

- High speed connectivity
- Sensors
- Cloud computing
- Big data
- Smart devices, Applications
- Video
- Wireless access
- Sharing (sensors, data)

Fibre – Smaller Investment, Large Return

Cost per Km







Open Access





SouthWestern Integrated Fibre Technology

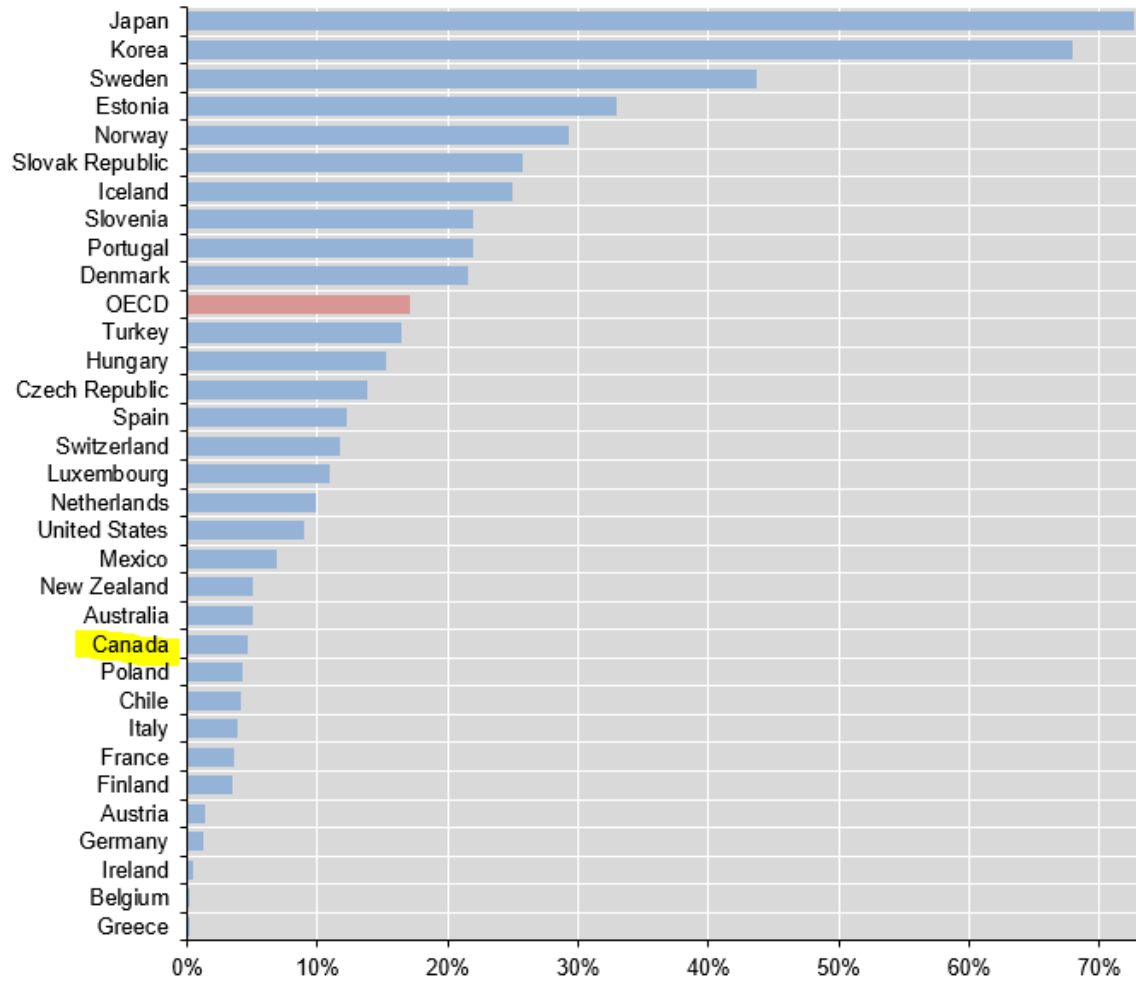
FINDINGS OF THE FEASIBILITY STUDY

Poor Fibre Broadband Penetration

- Japan 72.7%
- Korea 68.0%
- Sweden 43.7%
- Canada 4.7%

- OECD Average 17.1%

Percentage of fibre connections in total broadband subscriptions, Dec 2014





Not enough consumer choice





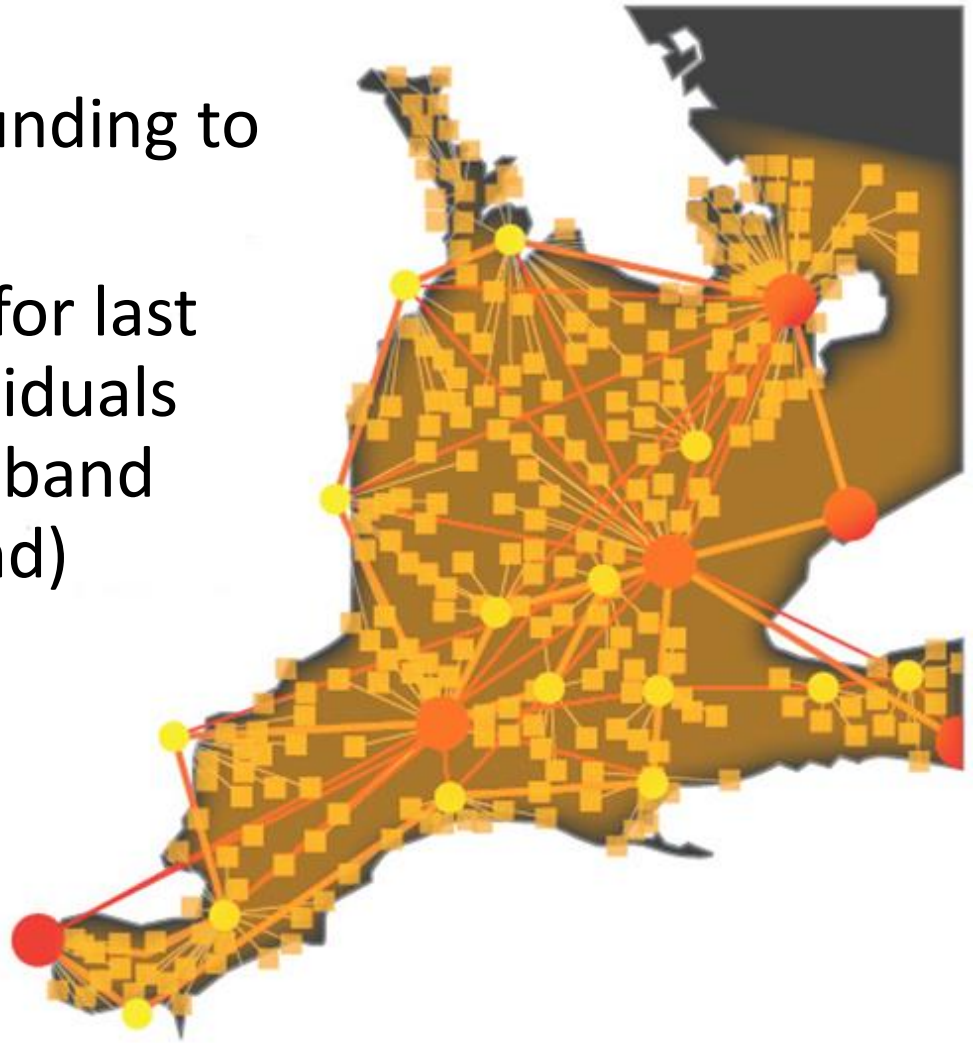
Providers pick the broadband winners and losers



Providers responsible to shareholders

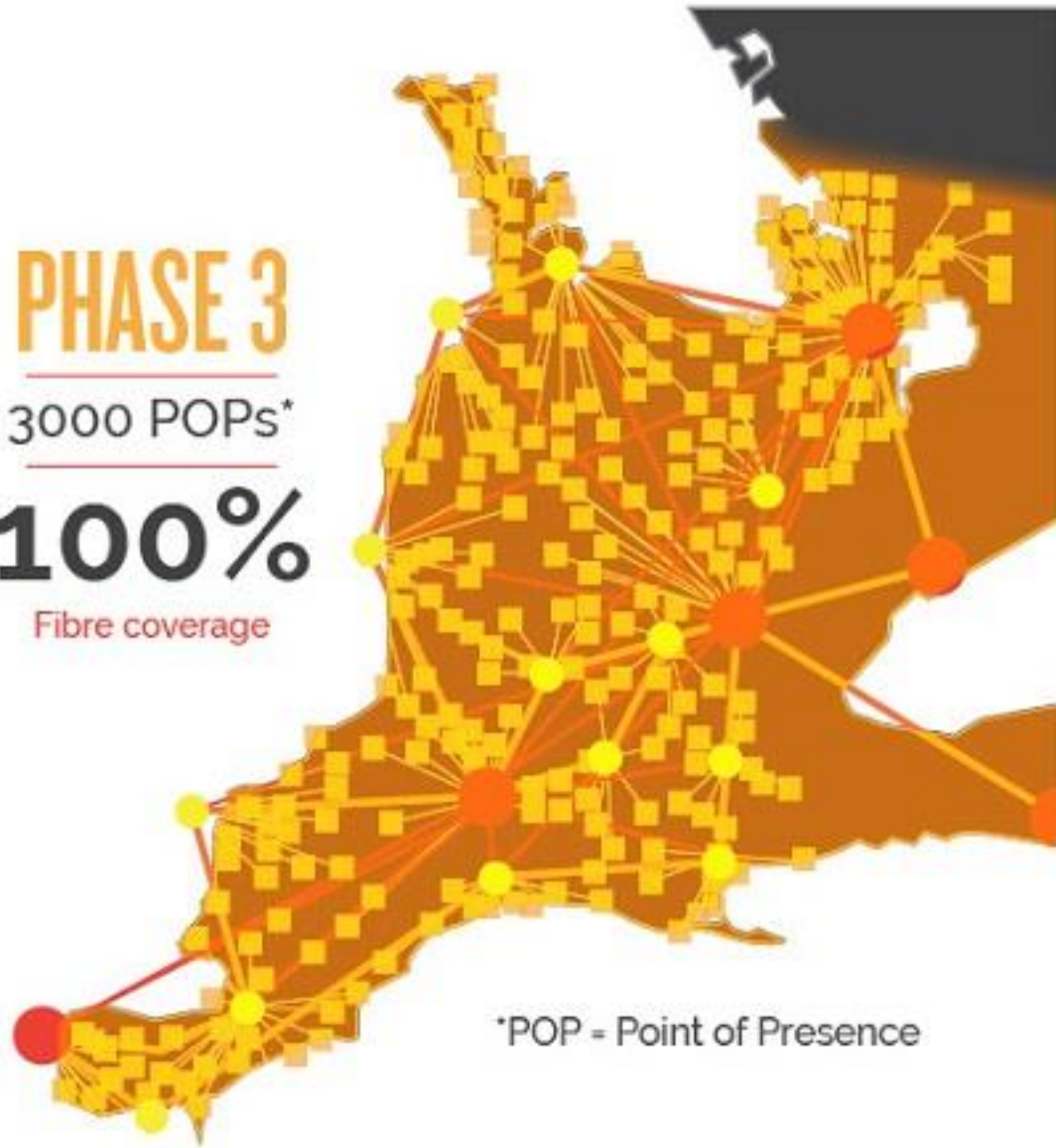
SWIFT network is feasible to build

- One time NBCF funding to get started
- Ongoing funding for last mile based on residuals from rates (Broadband Development Fund)



The Plan – BDF funds ongoing builds

PHASE 3
3000 POPs*
100%
Fibre coverage



*POP = Point of Presence



Why SWIFT?

- Modern economy (agriculture, home, MUSH, SME) requires fast, reliable broadband
- Fibre is only long term solution that scales to future needs of Internet of Things
- SWO needs a catalyst to spur broadband development to improve service quality / price
- SWIFT improves ROI for providers in rural areas (and many urban areas) to build fibre (due to density and demographics)
- SWIFT will subsidize fibre builds via RFP and has an ongoing subsidy mechanism (including further funding) so everyone gets connected

“enhance the prosperity and overall well being of our communities”



SouthWestern Integrated Fibre Technology

WHERE WE GO FROM HERE



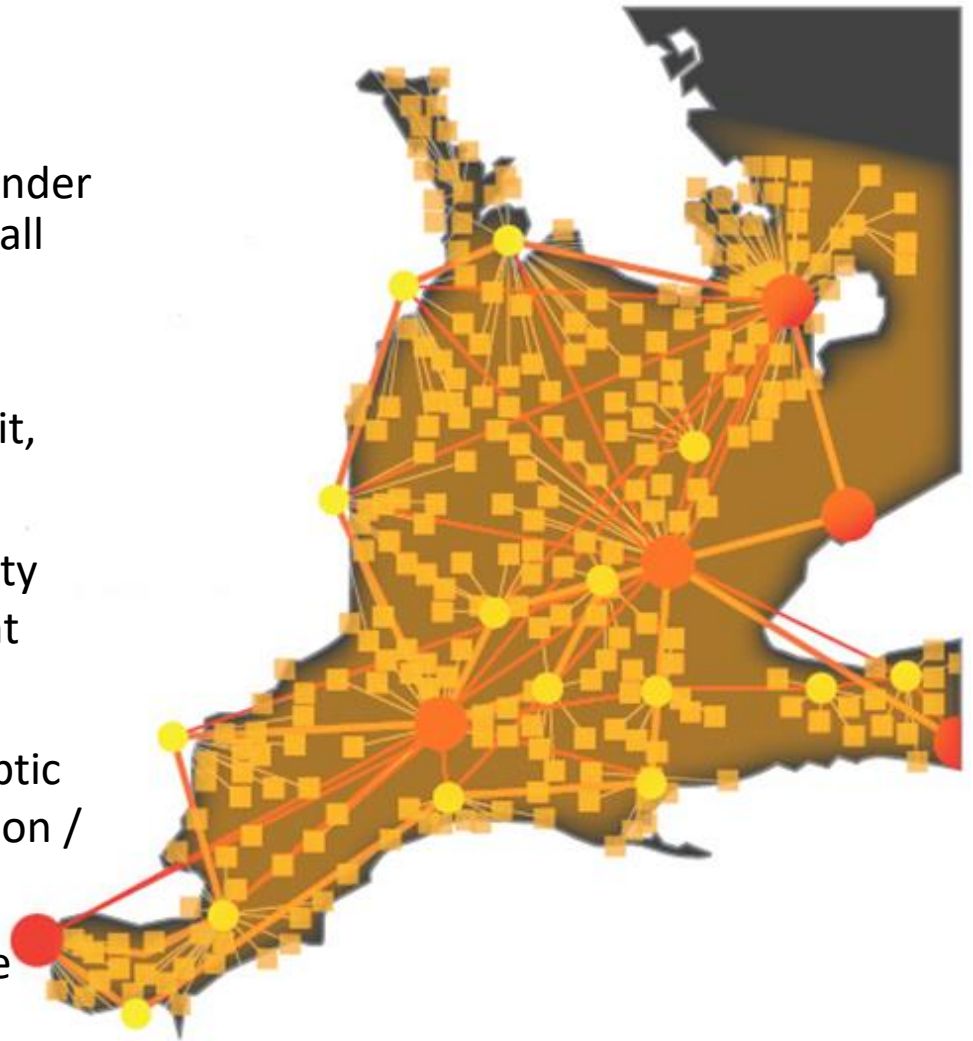
SWIFT Organizational Structure

- SWIFT - Not-for-profit, non-share capital corporation
- Governed by board of directors (10 municipal, 5 other public sector)
- Providers build, own and run network – SWIFT oversees compliance with principles and subsidy
- Existing fibre assets employed wherever available, new fibre assets built to fill gaps
- SWIFT is funded ongoing by residuals from rates from providers

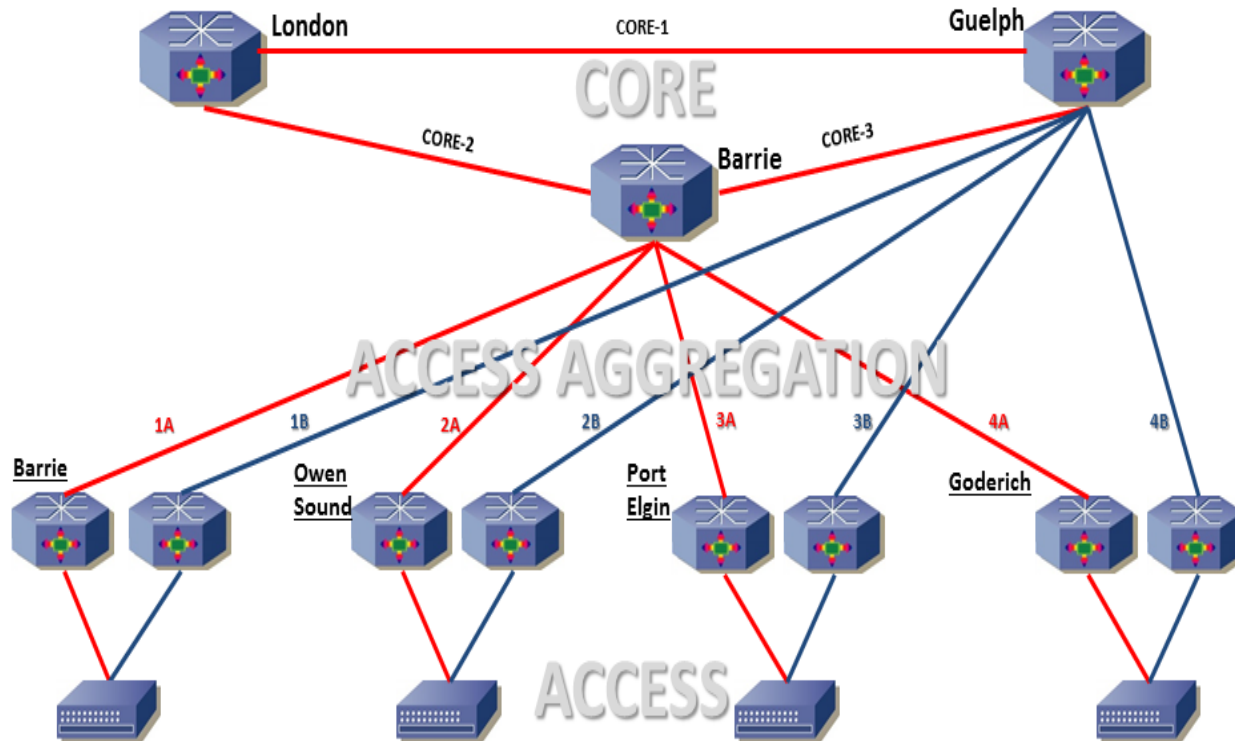
The SWIFT Network Design

Phase 1 Features

- Up to 1 Gbps access for under \$100/ month (target) for all business & residents
- IXP's like 151 Front St., Toronto, Windsor / Detroit, 350 Main St., Buffalo
- Path & electronics diversity from all POPs to 151 Front Street
- 350 Communities fibre optic access to as low as 4 person / km²
- Design does not duplicate existing fibre optic infrastructure



Not just ubiquitous and fast, **BETTER** Internet



| Simcoe County | | | Grey County | | Bruce County | | Huron County | |
|---------------|-----------------|------------------|-----------------|--------------|---------------------|--------------|---------------|------------------|
| Alliston | Elmvale | Port McNicoll | Ayton | Holstein | Adamsville | Mar | Auburn | Huron Park |
| Angus | Glencairn | Port Severn | Big Bay | Keady | Allenford | Mildmay | Bayfield | Morris-Turnberry |
| Balm Beach | Hawkstone | Sebright | Bognor | Kimberley | Barrow Bay | Miller Lake | Bluewater | Seaforth |
| Barrie | Innisfil | Severn Bridge | Chatsworth | Markdale | Cargil | Paisley | Blyth | South Huron |
| Beeton | Lafontaine | Stayner | Clarksburg | Meaford | Chepstow | Pike Bay | Brussels | St. Joseph |
| Borden | Lisle | Stroud | Craileith | Mount Forest | Chesley | Point Clark | Central Huron | Vanastra |
| Bradford West | Midhurst | Thornton | Desboro | Neustadt | Chippewas of | Port Elgin | Centralia | Varna |
| Gwillimbury | Midland | Tottenham | Dundalk | Owen Sound | Nawash First Nation | Red Bay | Clinton | Walton |
| Brechin | Minesing | Victoria Harbour | Durham | Priceville | Dyers Bay | Ripley | Crediton | Wingham |
| Chippewas of | Moonstone | Wasaga Beach | Elmwood | Shallow Lake | Ferndale | Sauble Beach | Dashwood | Wroxeter |
| Rama First | Nottawa | Washago | Feversham | Stanton | Formosa | Southampton | Exeter | Zurich |
| Nation | New Lowell | Waubaushe | Flesherton | The Blue | Hepworth | Stokes Bay | Goderich | |
| Coldwater | New Tecumseth | Woodland Beach | Georgian Bluffs | Mountains | Holyrood | Tara | Corrie | |
| Collingwood | Orillia | Wyebridge | Grey Highlands | Thornbury | Inverhuron | Teeswater | Hensall | |
| Cookstown | Oro Station | | Hanover | Williamsford | Kincardine | Tiverton | | |
| Craighurst | Penetanguishene | | | | Lions Head | Tobermory | | |
| Creemore | Perkinsfield | | | | Lucknow | Walkerton | | |
| Duntroon | Phelpston | | | | | Warton | | |

Project Capital Costs

Costs

- Current Project Cost \$269M*
- SWIFT only subsidizes scalable fibre
- Partners have invested over \$800K on project to date

Funding

| | | | |
|--------------|---------|-----|-----|
| • Federal | \$94.3M | 1/3 | |
| • Provincial | \$94.3M | 1/3 | |
| • Municipal | \$18.0M | | 72% |
| • Private | \$80.4M | 1/3 | |

* Does not include communities over 100K population - Numbers are best estimates based on current knowledge (total project \$281M)



Barrie's Opportunity

- Get involved: Largest city in northern area of project
- Current location of one of three core network sites
- Help your local region grow and prosper – “a rising tide floats all boats”



Prime Minister of India Narendra Modi

“Cities in the past were built on riverbanks. They are now built along highways. But in the future, they will be built based on availability of optical fiber networks and next-generation infrastructure.”





SouthWestern Integrated Fibre Technology

Questions?

Geoff Hogan

[@geoffhogan](#)

Geoff.Hogan@grey.ca



SouthWestern Integrated Fibre Technology

Background Information



Why SWIFT?

1. SWIFT is a non-profit corporation whose primary concern is the public interest.
2. SWIFT is a large buying group of users, giving it clout with telecom service providers on behalf of everyone in Southwestern Ontario.
3. An open network means you will have a wider selection of providers, creating competition, better services, and lower rates.
4. Regardless of population density or economic status, telecom providers will connect everyone with fibre using subsidies from SWIFT.
5. Telecom service providers will build, own, and operate the SWIFT Network so we don't have to reinvent the wheel.
6. The SWIFT board of directors will hold providers accountable for delivering on their promises as spelled out in the contracts for the project.



RFPQ / RFP

- Funding announcement
- RFPQ
 - Pre-Qualifies Financial, Insurance and Indemnity
 - Requires location of providers fibre and points of presence
- Analysis of RFPQ data
- Provider / user consultation
- Construction Plan developed
- Business case finalized
- SWIFT member Council's approval
- RFP's released

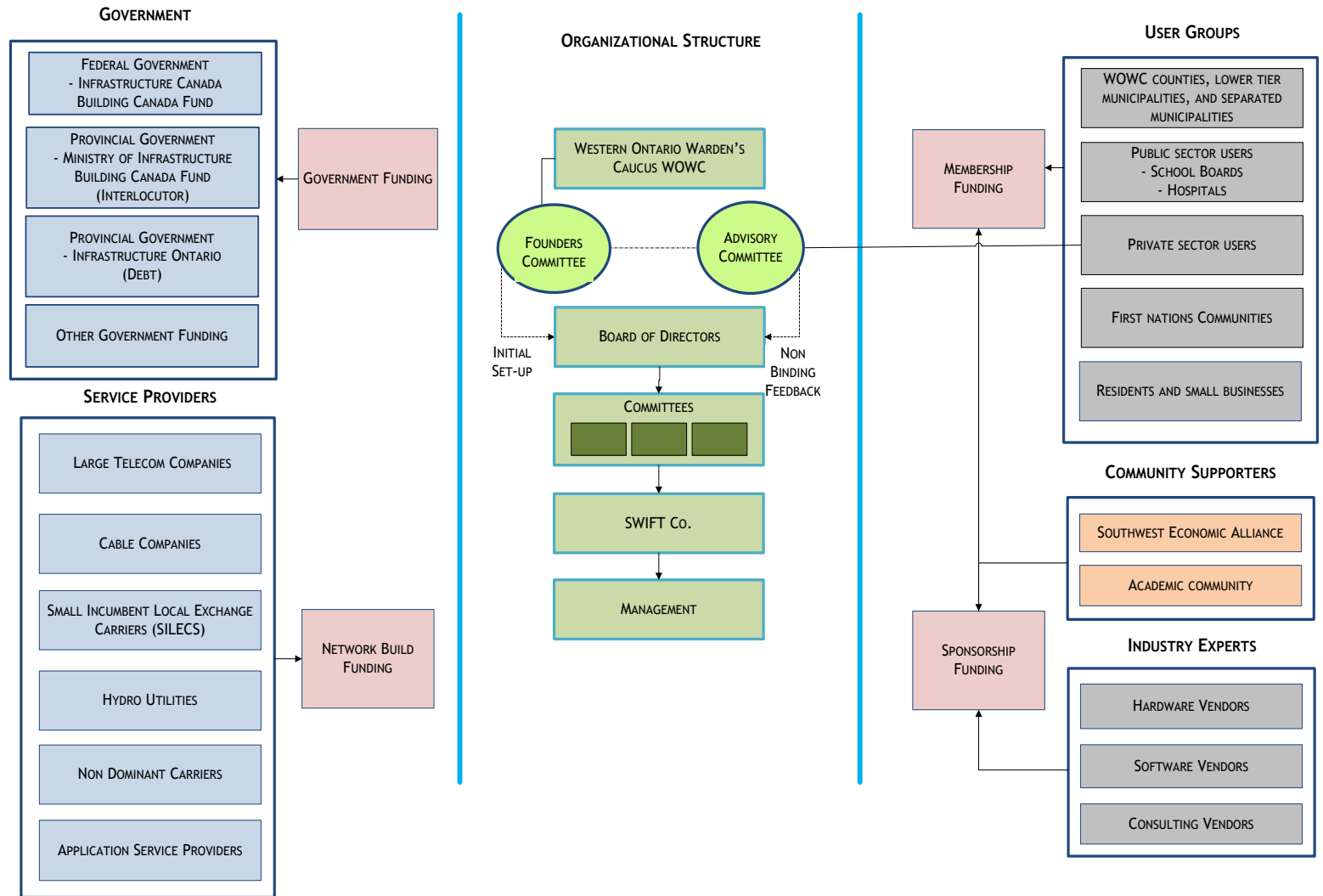


Municipal Capital Contribution

- Municipal contribution based on formula
 - Need
 - Land area
 - Population
 - Capacity (FIR)
- Total annual contributions* vary
 - Low: Brant County \$69,400
 - High: Simcoe County \$491,500
- Calculated Barrie contribution \$ 54,285

- Values are subject to change
- Annual contributions happen for five (5) years
- Separated municipalities have been asked to contribute capital

Organization structure



Point of Presence (POP) “Orange Box”





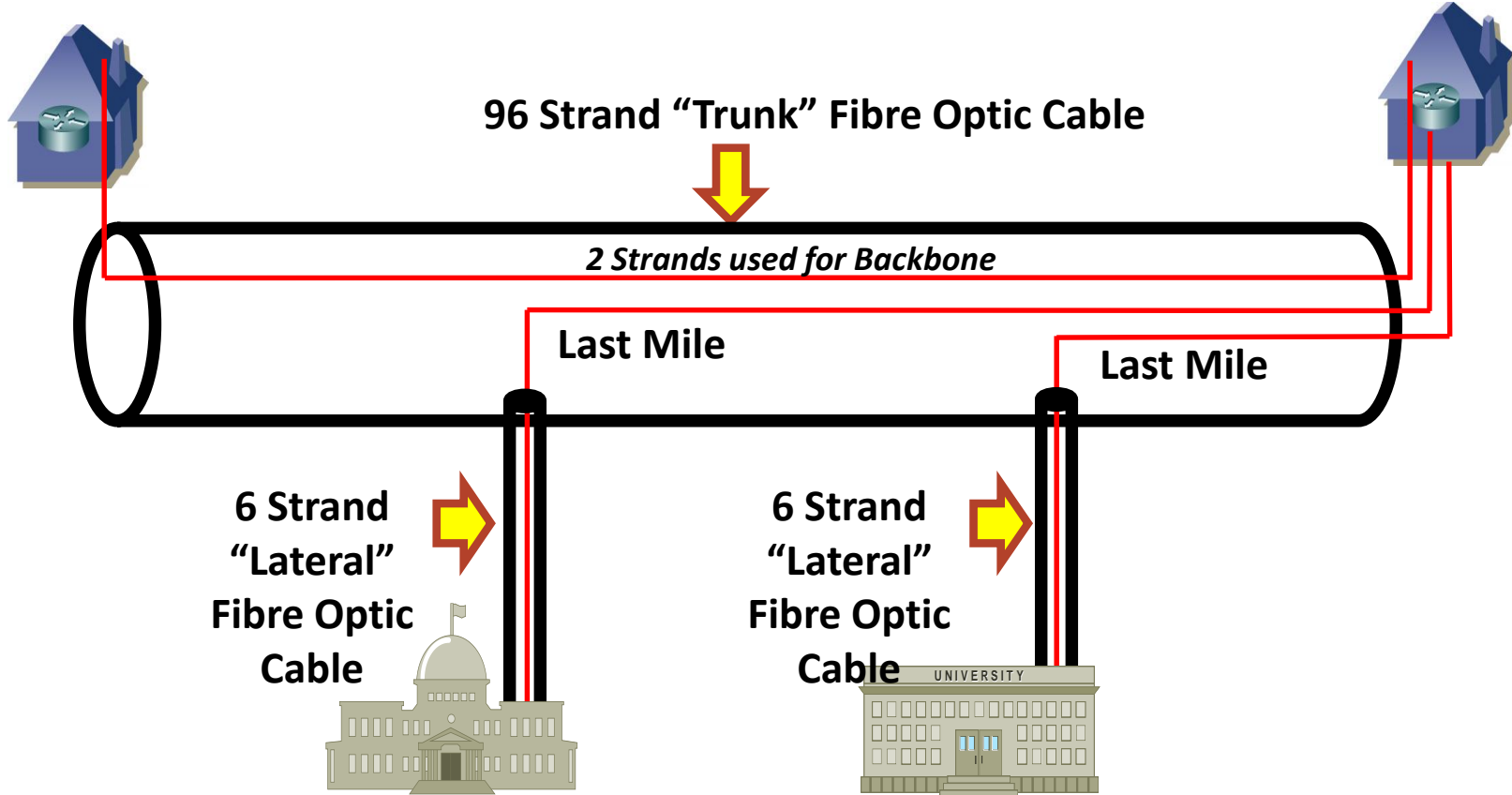
SouthWestern Integrated Fibre Technology

SOLVING THE LAST MILE PROBLEM

What is "Last Mile?"

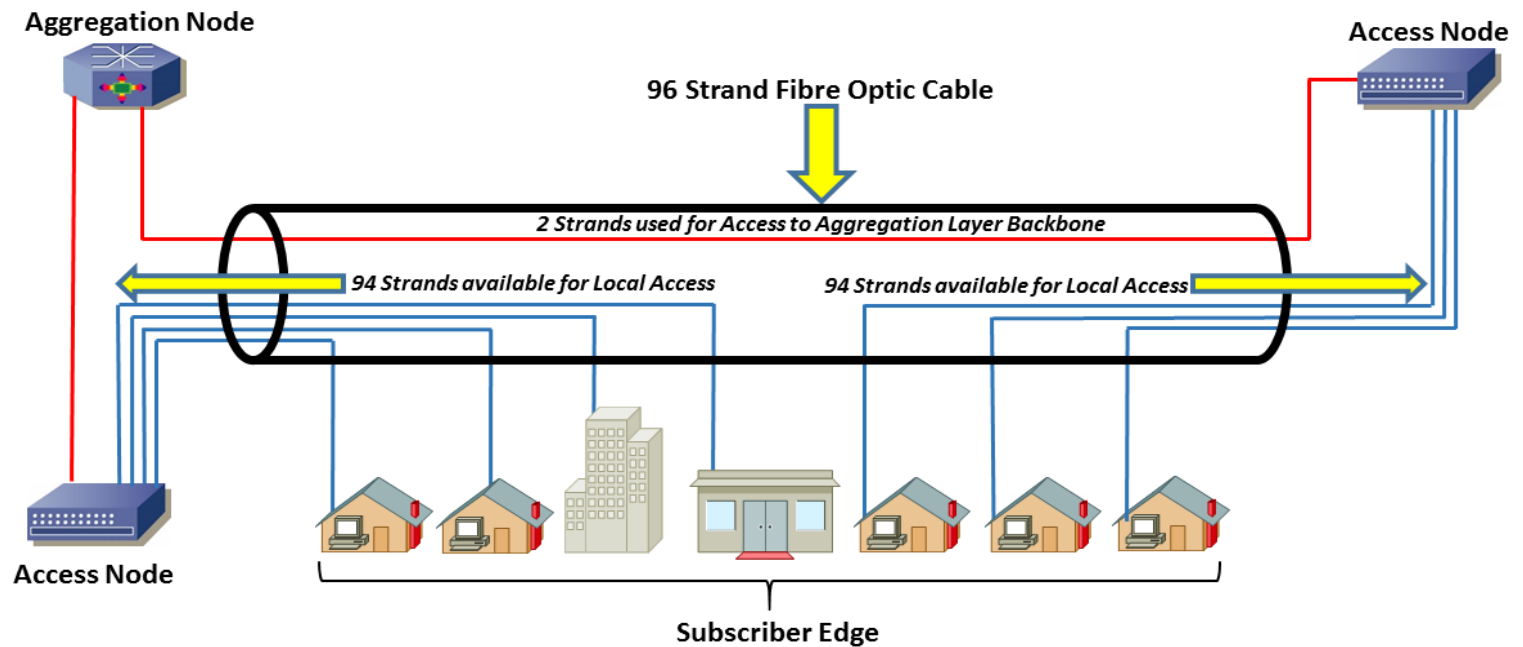
Point of Presence (PoP)
Central Office

Point of Presence (PoP)
Central Office



SWIFT's Contribution to Reducing Lateral Distances

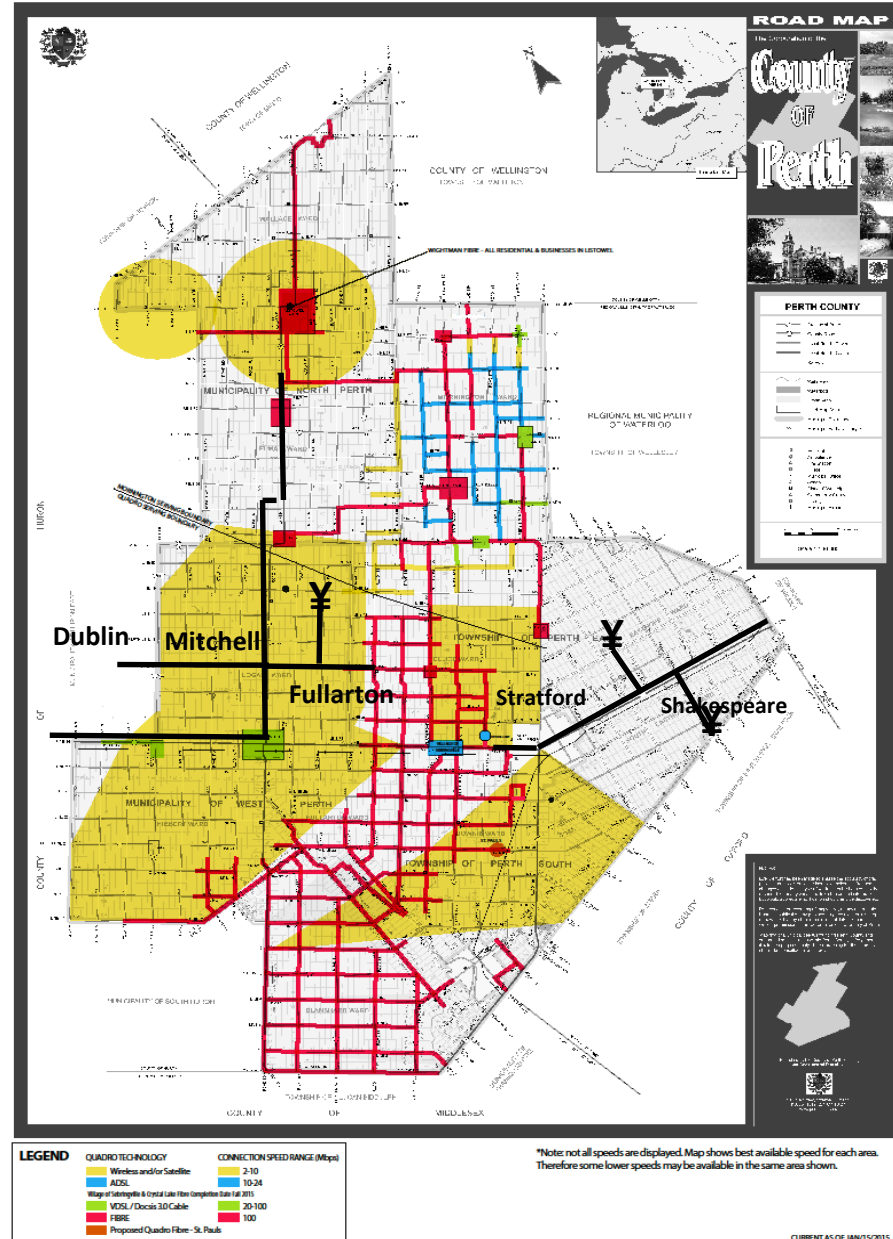
- Residual capacity from 500 km of backbone cable construction
- Residual capacity from 2,200 km of aggregation network cable construction



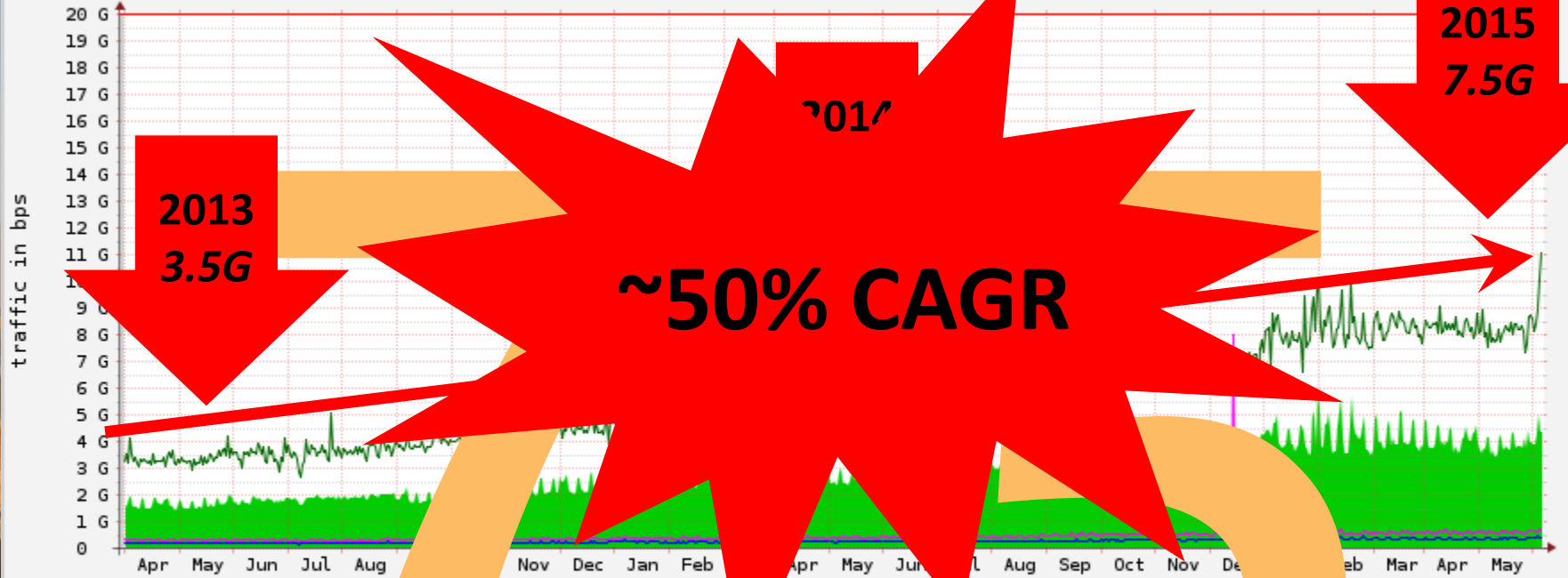
The SWIFT Effect

- 120 km fibre build for core and aggregation
- Mitchell, Dublin, Fullarton, Shakespeare now have Points of Presence
- Substantial residual capacity exists to support further last mile build out
- Barrier to last mile investment has been substantially reduced
- Rural Schools connected (plus other MUSH)
- Over 2000 MUSH sector sites

BROADBAND CONNECTION SPEEDS IN PERTH COUNTY



Internet Usage: combined



■ Peak inbound traffic
■ Peak outgoing traffic
■ 100% Bandwidth (20 Gbps)

Max In: 11.05 Gbps (55%)
Max Out: 8.02 Gbps (40%)

■ Incoming traffic
■ Outgoing traffic

2.80 Gbps (14%)
266.52 Mbps (1%)

Cur In: 4.32 Gbps (22%)
Cur Out: 395.38 Mbps (2%)

Jun 3 12:30:00 2015

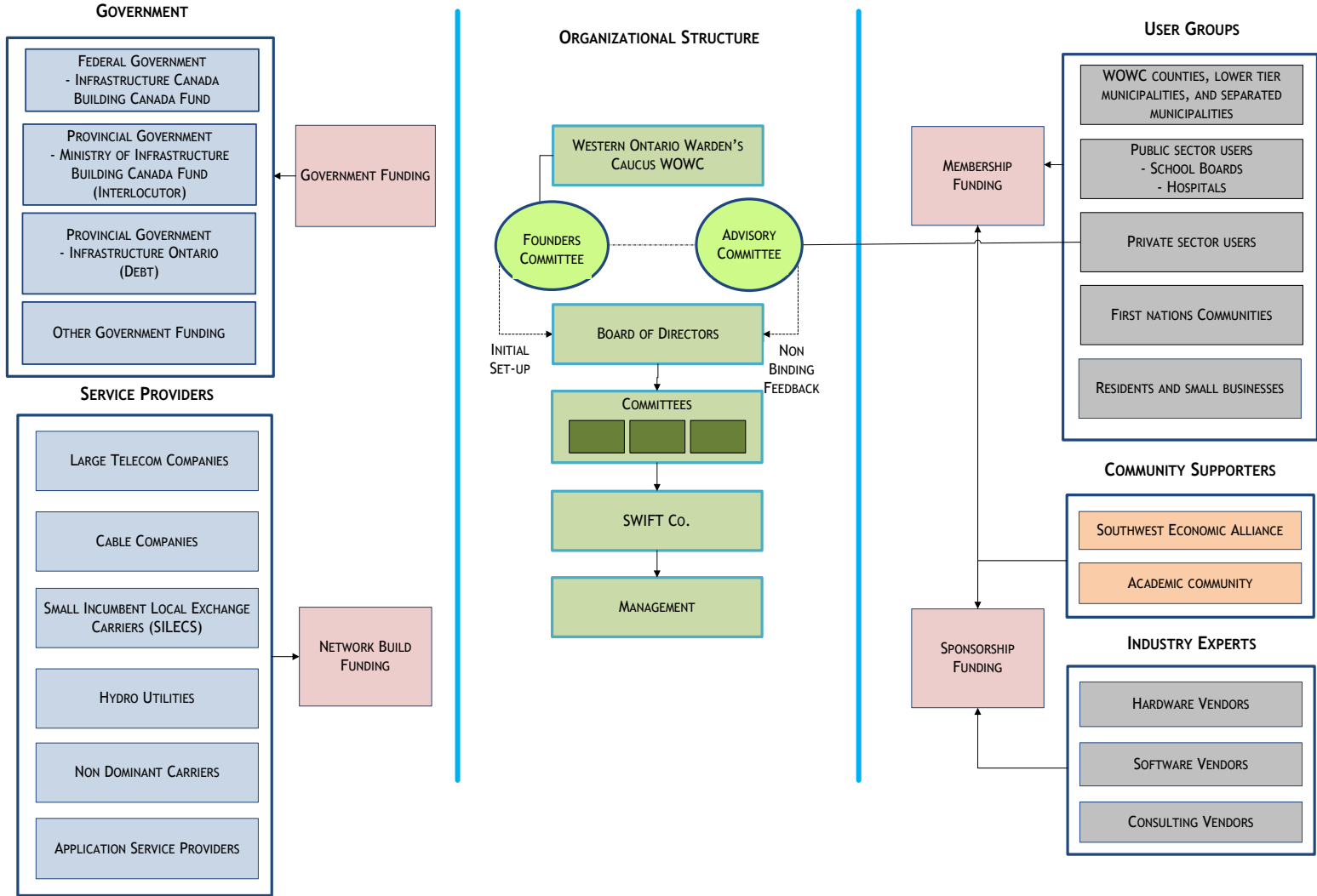
ROUTER / TOB / USER

2013 Study with a 10-year Dataset

50% > 75GiB

| | Predicted Range (GiB) | |
|--------------|-----------------------|--------------|
| | Mean | Median |
| October 2013 | 43.14-44.89 | 20.79-22.29 |
| October 2014 | 59.53-61.94 | 28.69-33.00 |
| October 2015 | 82.15-85.48 | 39.59-48.83 |
| October 2016 | 113.36-117.96 | 54.63-72.27 |
| October 2017 | 156.44-162.79 | 75.39-106.96 |

Organization structure





Broadband Development Fund (BDF)

- \$281 M* does not give everyone access to fibre – need ongoing funding/subsidy
- SWIFT partner provider pays a small (~3.5%) percentage of revenue back to SWIFT for each connection
- Funds are allocated by SWIFT board periodically to continue to subsidize providers until all of SWO has access to fibre based broadband

* \$4B-\$7B to fibre everyone in SWO and Niagara



Residents – Families, Seniors, Students

1. Cut down on travel expenses with better connected healthcare services.
2. Go to school anywhere in the world with access to online education programs.
3. Government services, taxes, permits, and licenses will all be available at home. No more line-ups.
4. Gain access to endless forms of entertainment providers.
5. Shop online for products you just can't find locally.
6. Collaborate on ideas and causes, make a difference around the world.
7. Be ready for the Internet of Things, when everything is controlled from a smart device.



Small and Medium Sized Businesses

1. Improve communications with suppliers and customers.
2. Connect your remote offices and centralize your business applications.
3. Utilize low-cost and robust cloud-based apps to streamline day-to-day business.
4. Be prepared for the Internet of Things to ensure your business survives the new era of technology.
5. Accomplish more with fewer resources, and level the playing field with your bigger competitors.
6. Increase your profit margins and see a shorter return on investment paybacks.



Large Businesses

1. Having highly available and low latency connectivity with your offices and customers around the globe supports high-frequency, secure transactions.
2. Outsource data management and enterprise applications to the cloud with confidence.
3. Become future proof by embracing Big Data.
4. Focus on your core business, which leads to improved products and services, as well as customer satisfaction.
5. Reduce operating costs and increase productivity.
6. See more attractive profit margins and a shorter return on investment paybacks.
7. Strengthen the global presence and competitiveness of your local operation.