

# Staff Report



---

To	General Committee
Subject	Stopping Prohibited – Innisfil Street – St. John Vianney Catholic School
Date	June 11, 2025
Ward	8
From	S. Rose, Manager of Traffic & ROWA Services
Executive Member Approval	M. Banfield, RPP, Executive Director of Development Services
CAO Approval	M. Prowse, Chief Administrative Officer
Staff Report #	DEV025-25

---

## Recommendation(s):

1. That Traffic By-law 2020-107, Schedule '1', "No Parking Anytime" be amended by removing the following:

<u>"Innisfil Street</u>	North side from Marshall Street to Adelaide Street extended"
-------------------------	--

2. That Traffic By-law 2020-107, Schedule '4', "Stopping Prohibited" be amended by adding the following:

<u>"Innisfil Street</u>	Both sides between Baldwin Lane and Adelaide Street south leg 8:00 a.m. to 5:00 p.m. except Saturdays, Sundays excluding Statutory Holidays"
-------------------------	--

3. That Traffic By-law 2020-107, Schedule '1', "No Parking Anytime" be amended by adding the following:

<u>"Innisfil Street</u>	North side from Marshall Street to Adelaide Street south leg"
-------------------------	---

<u>"Innisfil Street</u>	East side from Baldwin Lane to Adelaide Street north leg"
-------------------------	---

<u>"Innisfil Street</u>	West side from Baldwin Lane to Adelaide Street north leg"
-------------------------	---

---

## Executive Summary:

**Development Services received an inquiry from the Ward Councillor to investigate the feasibility of implementing a “No Stopping 8:00 a.m. to 5:00 p.m. except Saturdays, Sundays excluding Statutory Holidays” on both sides of Innisfil Street, in front of St. John Vianney Catholic School, and report back to General Committee.**

Innisfil Street is classified as a two-lane local roadway with a sidewalk on the east side in front of St. John Vianney Catholic School. **Innisfil Street is a designated Community Safety Zone with a 40km/h posted speed limit.**

**Within the study area, “No Parking Anytime” is implemented on both sides of Innisfil Street, from Marshall Street to Baldwin Lane.** All streets adjacent to St. John Vianney Catholic School have parking or stopping restrictions in place. Outside of these restrictions, parking is permitted.

**Staff consulted with the principal of St. John Vianney Catholic School regarding potential safety concerns when vehicles park on both sides of Innisfil Street during drop-off and pick-up times.** Temporary parking in this area requires children and parents to cross the road between stopped and parked cars creating operational and safety concerns for both pedestrians and motorists. The principal confirmed that both parking lots off Baldwin Lane and Innisfil Street are available for use by parents and staff.

## Key Findings:

Staff performed preliminary site investigations around St. John Vianney Catholic School arrival and dismissal times. Staff observed vehicles parking on both sides of the street in the “No Parking” area for drop-offs and pickups. **Children and parents were observed crossing the street from parked vehicles creating operational and safety concerns for both pedestrian and motorist.**

**Prohibiting stopping on both sides of Innisfil Street will prevent parents from stopping for drop-offs and pick-ups and eliminate children from crossing the road between parked cars.** Both parking lots located off Baldwin Lane and Innisfil Street are recommended for staff and parents for drop off and pick up. Please refer to Appendix A.

## Financial Implications:

The cost associated with installing the proposed parking signage is approximately \$1,000 which can be accommodated in the 2025 Operating Budget.

## Alternatives:

The following alternative is available for consideration by General Committee:

**Alternative #1 – General Committee could maintain the existing parking restrictions of “No Parking Anytime” on both sides of Innisfil Street between Baldwin Lane and Adelaide Street.** This alternative is not recommended as it creates a conflict between motorists and pedestrians during school arrival and dismissal times.

**Strategic Plan Alignment:**

Affordable Place to Live		
Community Safety	X	This recommendation will restrict vehicles from stopping directly in front of the school and eliminate children and parents from crossing the road between parked cars.
Thriving Community		
Infrastructure Investments		
Responsible Governance		

**Additional Background Information and Analysis:**

Not Applicable

**Consultation and Engagement:**

Staff consulted with the principal of St. John Vianney Catholic School regarding potential safety concerns when vehicles park on both sides of Innisfil Street during drop-off and pick-up times.

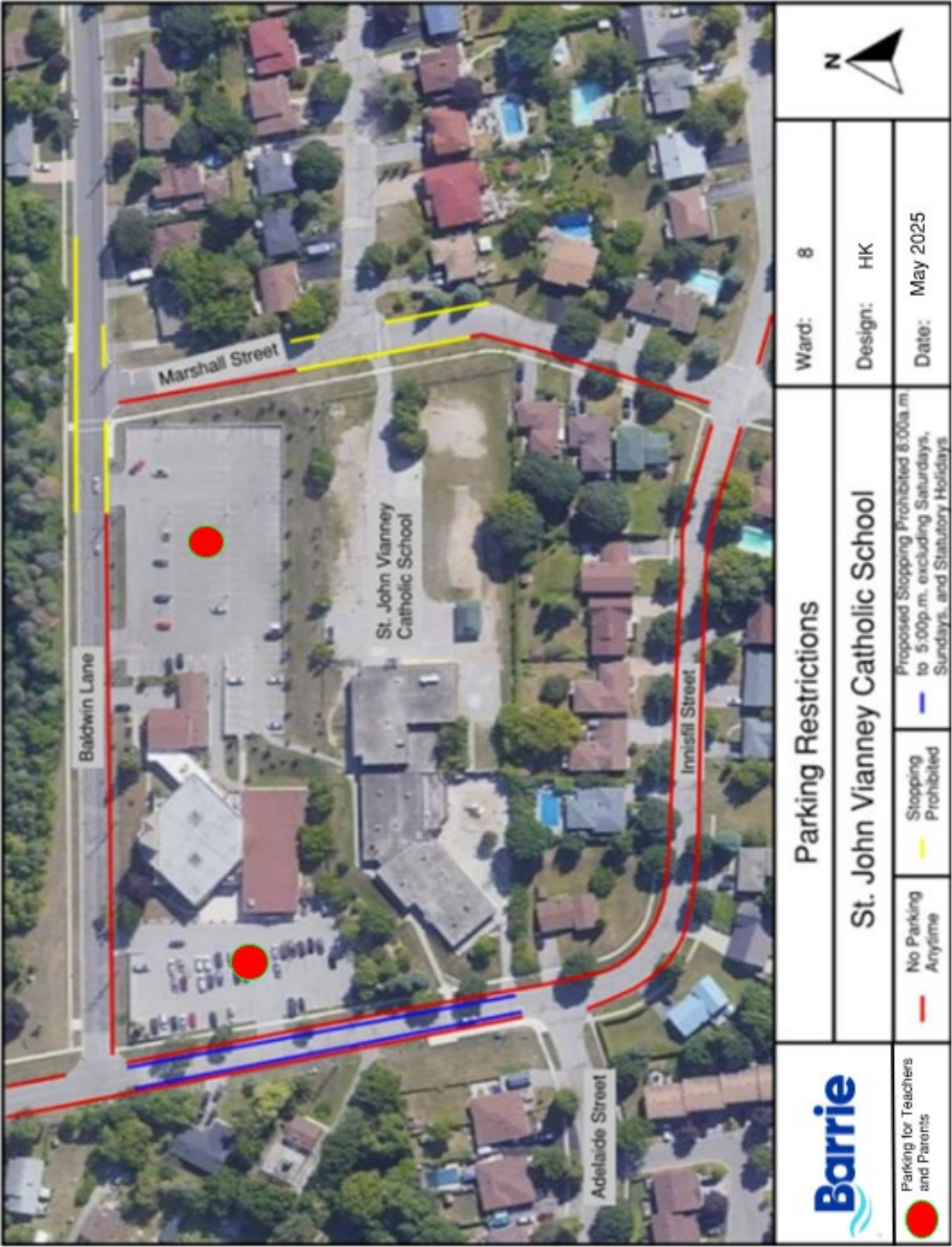
**Environmental and Climate Change Impact Matters:**

There are no environmental and/or climate change impact matters related to the recommendation.

**Appendix:**

Appendix A – Parking Restrictions

Appendix A – Parking Restrictions



**Report Author:**

Hafsa Kamil, Transportation Operations Technologist, Development Services

**File #:**

SR01

**Pending # (if applicable):**

Not Applicable