

**TO:** GENERAL COMMITTEE

**SUBJECT:** PARKING PROHIBITION ON COLLEGE CRESCENT, COOK STREET & NELSON STREET

**WARD:** 1

**PREPARED BY AND KEY CONTACT:** JUSTIN MACDONALD, C.E.T.  
TRANSPORTATION TECHNOLOGIST (EXT. 5178)

**SUBMITTED BY:** D. FRIARY  
DIRECTOR OF ROADS, PARK, and FLEET

**GENERAL MANAGER APPROVAL:** R. J. FORWARD, MBA, M.Sc., P. Eng.  
GENERAL MANAGER OF INFRASTRUCTURE & GROWTH MANAGEMENT

**CHIEF ADMINISTRATIVE OFFICER APPROVAL:** C. LADD  
CHIEF ADMINISTRATIVE OFFICER

**RECOMMENDED MOTION**

1. That By-law 80-138 Schedule "A", "No Parking Anytime" be amended by adding the following:

<u>Column 1</u>	<u>Column 2</u>
"College Crescent	Northerly portion of College Crescent on the south side from Nelson Street to a point approximately 65 metres west of Lonsdale Place."
"College Crescent	Southerly portion of College Crescent on the west and south side between East Gate and Nelson Street."
"College Crescent	West side from East Gate to a point 178 metres north."

2. That By-law 80-138 Schedule "B", "No Parking in Specified Places Where Signs on Display at Stated Times" be amended by deleting the following:

<u>Column 1</u>	<u>Column 2</u>	<u>Column 3</u>
"College Crescent	Odd house numbered side	1 <sup>st</sup> of the month to the 15 <sup>th</sup> of the month."
"College Crescent	Even house numbered side	16 <sup>th</sup> of the month to the end of the month."

3. That By-law 80-138 Schedule "A", "No Parking Anytime" be amended by deleting the following:

<u>Column 1</u>	<u>Column 2</u>
"Cook Street	Both sides from Georgian College entrance southerly 90 metres"

And add the following:

<u>Column 1</u>	<u>Column 2</u>
"Cook Street	West side from Georgian College Entrance southerly 90 metres"

4. That By-law 80-138 Schedule "B", "No Parking in Specified Places Where Signs on Display at Stated Times" be amended by deleting the following:

<u>Column 1</u>	<u>Column 2</u>	<u>Column 3</u>
"Cook Street from 90 metres southerly of Georgian College entrance to Grove Street	Both sides	8:00 a.m. to 5:00 p.m., excluding Saturdays, Sundays, and Statutory Holidays."

And add the following:

<u>Column 1</u>	<u>Column 2</u>	<u>Column 3</u>
"Cook Street from 90 metres southerly of Georgian College entrance to Grove Street	West side	8:00 a.m. to 5:00 p.m., excluding Saturdays, Sundays, and Statutory Holidays."
Cook Street from the Georgian College entrance to Grove Street	East side	8:00 a.m. to 5:00 p.m., excluding Saturdays, Sundays, and Statutory Holidays."

5. That By-law 80-138 Schedule "B", "No Parking in Specified Places Where Signs on Display at Stated Times" be amended by deleting the following:

<u>Column 1</u>	<u>Column 2</u>	<u>Column 3</u>
"Nelson Street between Corbett Drive and the north limit	Both sides	8:00 a.m. to 5:00 p.m., Monday to Friday."

And add the following:

<u>Column 1</u>	<u>Column 2</u>	<u>Column 3</u>
"Nelson Street between Corbett Drive and the north limit	Both sides	8:00 a.m. to 5:00 p.m., Monday to Friday, excluding Saturdays, Sundays, and Statutory Holidays."

**PURPOSE & BACKGROUND**

**COLLEGE CRESCENT**

6. This Staff Report is to provide a follow-up to the viability of the Parking Pilot Project that was conducted on College Crescent. The pilot project, which was implemented in November 2014, alternated parking from one side of the roadway to the other based on the days of the month, as indicated below:

<u>Column 1</u>	<u>Column 2</u>	<u>Column 3</u>
“College Crescent	Odd house numbered side	1 <sup>st</sup> of the month to the 15 <sup>th</sup> of the month.”
“College Crescent	Even house numbered side	16 <sup>th</sup> of the month to the end of the month.”

7. College Crescent is a two-lane local roadway with a pavement width of 8.5 metres, and sidewalks on both sides, located within Ward 1. Please refer to Appendix “A”.
8. Previously, on-street parking was permitted on the north leg of College Crescent on the north side from Nelson Street to a point 65 metres west of Lonsdale Place.
9. Previously, on-street parking was permitted on the south leg of College Crescent on the east and north side from a point 65 metres west of Lonsdale Place south to Nelson Street.
10. Overnight on-street parking is prohibited from December 1<sup>st</sup> to March 31<sup>st</sup>, between 12:01 a.m. and 7:00 a.m. for the purpose of snow clearing.

**COOK STREET**

11. Staff have received a request from area residents located along the northern portion of Cook Street in the “No Parking Anytime” zone to review the feasibility of allowing some on-street parking during evenings, weekends, and statutory holidays.
12. Cook Street is a two-lane local roadway with a pavement width of 8.5 metres, and sidewalks on both sides, located within Ward 1. Please refer to Appendix “B”.
13. Currently, on-street parking is prohibited anytime on both sides of Cook Street from the Georgian College entrance to a point 90 metres south thereof.
14. Parking is also prohibited on both sides of Cook Street from a point 90 metres south of the Georgian College entrance to Grove Street from 8:00 a.m. to 5:00 p.m. Monday to Friday, excluding Saturday, Sunday, and statutory holidays.

**NELSON STREET**

15. Staff have received a request from area residents located along Nelson Street to review the feasibility of allowing some on-street parking during statutory holidays.
16. Nelson Street is a two-lane local roadway with a pavement width of 8.5 metres, and sidewalks on both sides, located within Ward 1. Please refer to Appendix “C”.

17. Currently, on-street parking is prohibited on both sides of Nelson Street from the north limit to Corbett Street from 8:00 a.m. to 5:00 p.m., Monday to Friday.

**ANALYSIS**

**COLLEGE CRESCENT**

18. Staff performed parking observations on College Crescent prior to the pilot project being implemented, which noted vehicles parked along the north side of College Crescent. These vehicles were not causing any operational or safety concerns, as parking along the south side of College Crescent is prohibited. College Crescent still functioned as a two-lane roadway and traffic was able to flow freely.
19. Staff completed additional observations on College Crescent during the pilot project and noted vehicles parking on both sides of the roadway during the transition period as drivers found this confusing.
20. Staff received multiple concerns from residents regarding the need for a “grace period” from Municipal By-law Enforcement during the transition period. Residents had difficulty switching their vehicles over in the early morning before enforcement began to patrol College Crescent and felt it was un-reasonable to require the vehicles to be moved that early.
21. Staff noted a single household with a defective gate and fencing which allowed direct access to Georgian College. Students were observed parking in the vicinity and using the gate as a short cut to access Georgian College. Councillor Ainsworth worked directly with the homeowner to have the gate and fence fixed and closed.
22. Staff’s observations once the gate and fence were closed noticed the parking concentration in that area has subsided.
23. A Parking Questionnaire was prepared and mailed to 110 properties on College Crescent approximately one (1) year after the pilot parking project was implemented. Results of the Parking Questionnaire are as follows:

<b>COLLEGE CRESCENT ON-STREET PARKING SURVEY</b>	<b>RESPONSES RECEIVED</b>	<b>PERCENTAGE OF RESPONSES</b>
The current on-street parking pilot project is more effective in reducing parking congestion and improves the operation and safety of College Crescent.	5	36%
The previous No Parking regulations on College Crescent were sufficient in providing on-street parking while maintaining sufficient on-street parking and suitable operations of College Crescent.	9	64%
<b>TOTAL (out of 110)</b>	<b>14</b>	<b>12%</b>

24. Respondents expressed great concern with regard to vehicles parking close to residential driveways which causes operational and safety concerns when trying to enter and exit their driveways. Currently, By-law 80-138 has a general provision which prohibits vehicles from parking within 1.5 metres of a residential driveway, which is enforced on a complaint basis.

25. Previously, on-street parking along College Crescent was limited to one side of the roadway, which provides sufficient roadway width for two-way travel and does not negatively impact the operation or safety of the roadway for pedestrians and motorists.
26. The door to door survey conducted by Councillor Ainsworth resulted in favour of returning the on-street parking regulation to the previous parking prohibition.
27. Based on survey results and staff review, staff recommend that By-law 80-138 Schedule "A", "No Parking Anytime" be amended by adding the following:

<u>Column 1</u>	<u>Column 2</u>
"College Crescent	Northerly portion of College Crescent on the south side from Nelson Street to a point approximately 65 metres west of Lonsdale Place."
"College Crescent	Southerly portion of College Crescent on the west and south side between East Gate and Nelson Street."
"College Crescent	West side from East Gate to a point 178 metres north."

28. Staff recommend that By-law 80-138 Schedule "B", "No Parking in Specified Places Where Signs on Display at Stated Times" be amended by deleting the following:

<u>Column 1</u>	<u>Column 2</u>
"College Crescent	Odd house numbered side 1 <sup>st</sup> of the month to the 15 <sup>th</sup> of the month."
"College Crescent	Even house numbered side 16 <sup>th</sup> of the month to the end of the month."

**COOK STREET**

29. A Parking Questionnaire was prepared and mailed to 10 properties on Cook Street. Results of the Parking Questionnaire are as follows:

<b>COOK STREET ON-STREET PARKING SURVEY</b>	<b>RESPONSES RECEIVED</b>	<b>PERCENTAGE OF RESPONSES</b>
Leave current parking in place on Cook Street. No Parking Anytime on both sides from the Georgian College entrance to a point 90 metres south.	4	80%
Implement the following parking amendment on Cook Street.  I. No Parking on the east side 8:00 am to 5:00 pm, Monday to Friday, excluding Statutory Holidays  II. No Parking Anytime on the west side from the Georgian College entrance to a point 90 metres south.	1	20%
<b>TOTAL (out of 10)</b>	<b>5</b>	<b>50%</b>

30. Staff reviewed the parking on Cook Street and determined there is a need to permit evening, weekend, and statutory holidays parking on Cook Street along the northern portion of the roadway.
31. Residents were in favour of leaving the current no parking in place as there were concerns regarding congestion near the Georgian College entrance. This entrance is used by students to access the school facilities for class, gym, etc. There is also a daycare facility located to the north east of the Georgian College entrance.
32. Staff recommend that By-law 80-138 Schedule "A", "No Parking Anytime" be amended by deleting the following:

<u>Column 1</u>	<u>Column 2</u>
"Cook Street	Both sides from Georgian College Entrance southerly 90 metres"

And add the following:

<u>Column 1</u>	<u>Column 2</u>
"Cook Street	West side from Georgian College entrance southerly 90 metres"

33. Staff recommend that By-law 80-138 Schedule "B", "No Parking in Specified Places Where Signs on Display at Stated Times" be amended by deleting the following:

<u>Column 1</u>	<u>Column 2</u>	<u>Column 3</u>
"Cook Street from 90 metres southerly of Georgian College entrance to Grove Street	Both sides	8:00 a.m. to 5:00 p.m., excluding Saturdays, Sundays, and Statutory Holidays."

And add the following:

<u>Column 1</u>	<u>Column 2</u>	<u>Column 3</u>
"Cook Street from 90 metres southerly of Georgian College entrance to Grove Street	West side	8:00 a.m. to 5:00 p.m., excluding Saturdays, Sundays, and Statutory Holidays."
Cook Street from the Georgian College entrance to Grove Street	East side	8:00 a.m. to 5:00 p.m., excluding Saturdays, Sundays, and Statutory Holidays."

34. The proposed recommendation will still prohibit on-street parking on the west side of Cook Street to ensure sufficient operation of the Georgian College entrance and still permit evening, weekend, and statutory holidays parking for area residents.

**NELSON STREET**

35. A Parking Questionnaire was prepared and mailed to 10 properties on Nelson Street. Results of the Parking Questionnaire are as follows:

<b>NELSON STREET ON-STREET PARKING SURVEY</b>	<b>RESPONSES RECEIVED</b>	<b>PERCENTAGE OF RESPONSES</b>
Leave current parking in place on Nelson Street. No Parking on both sides 8:00 am to 5:00 pm, Monday to Friday.	1	13%
Implement the following parking amendment on Nelson Street.  I. No Parking on the both sides 8:00 am to 5:00 pm, Monday to Friday, excluding Saturdays, Sundays, and Statutory Holidays	7	87%
<b>TOTAL (out of 10)</b>	<b>8</b>	<b>80%</b>

36. Staff recommend that By-law 80-138 Schedule "B", "No Parking in Specified Places Where Signs on Display at Stated Times" be amended by deleting the following:

<u>Column 1</u>	<u>Column 2</u>	<u>Column 3</u>
"Nelson Street between Corbett Drive and the north limit	Both sides	8:00 a.m. to 5:00 p.m., Monday to Friday."

And add the following:

<u>Column 1</u>	<u>Column 2</u>	<u>Column 3</u>
"Nelson Street between Corbett Drive and the north limit	Both sides	8:00 a.m. to 5:00 p.m., Monday to Friday, excluding Saturdays, Sundays, and Statutory Holidays."

37. The proposed recommendation will still prohibit on-street parking during school hours which will prevent Georgian College students from parking for long durations and causing congestion, but will allow area residents to park during evenings, weekends, and statutory holidays.
38. Barrie Police Service, Barrie Fire and Emergency Service, and Municipal Law Enforcement do not oppose the recommended motion.

**ENVIRONMENTAL MATTERS**

39. There are no environmental matters related to the recommendation.

### **ALTERNATIVES**

40. Three (3) alternatives are available for consideration by General Committee.

**Alternative #1** General Committee could decide to maintain the current parking pilot project on College Crescent.

This alternative is not recommended as the parking pilot project causes confusion for area residents; as well, both the staff survey and Councillor Ainsworth's survey of residents supported returning parking to the previous regulations.

**Alternative #2** General Committee could decide to maintain the current no parking anytime on the northern portion of Cook Street.

This alternative is not recommended as Cook Street is a local roadway and there is a need for evening, weekend, and statutory holidays parking for area residents.

**Alternative #3** General Committee could decide to maintain the current parking regulations on Nelson Street.

This alternative is not recommended as Nelson Street is a local roadway and there is a need for evening, weekend, and statutory holidays parking for area residents.

### **FINANCIAL**

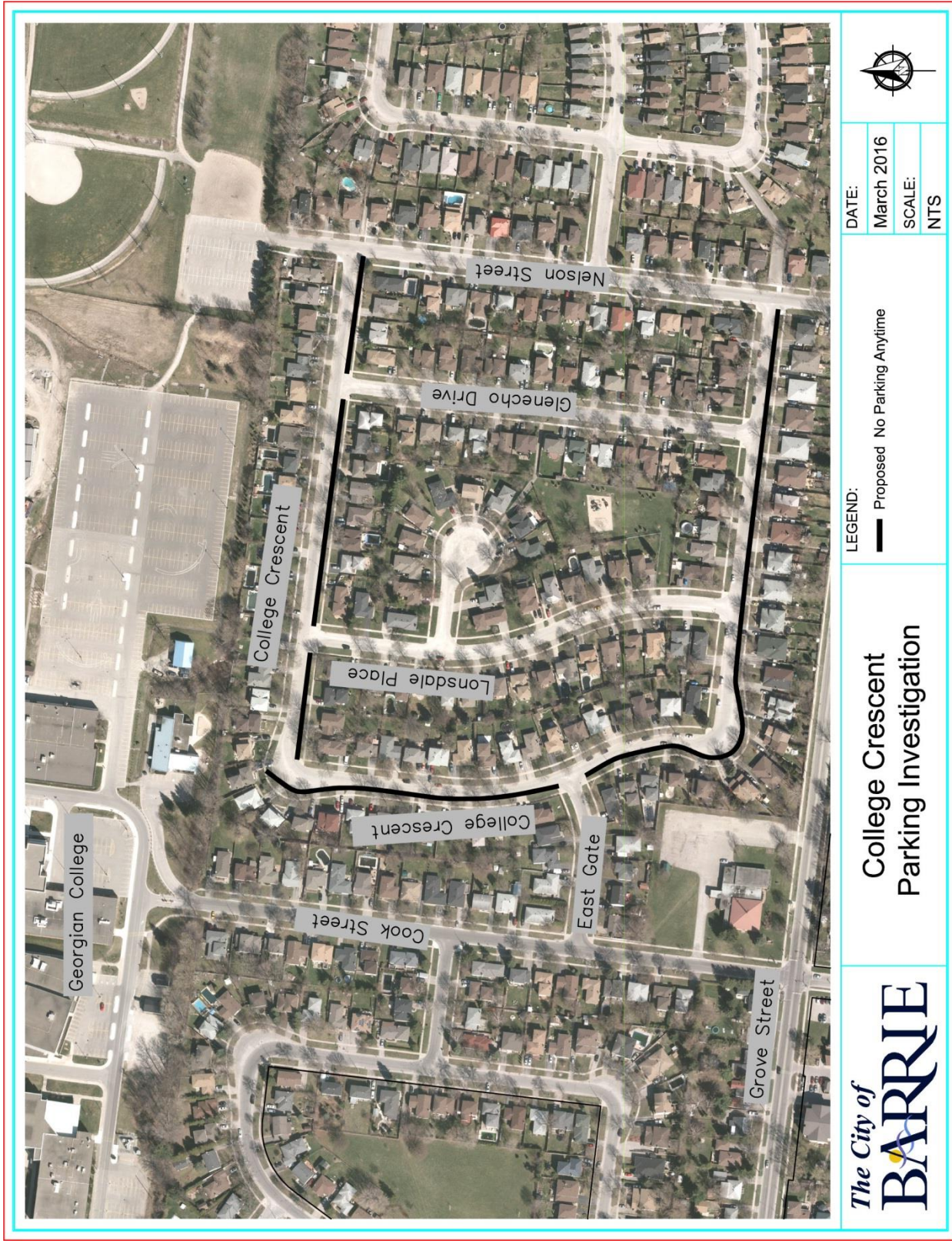
12. The cost of implementing the proposed parking regulations is approximately \$1,600 which can be accommodated in the 2016 Business Plan.

### **LINKAGE TO COUNCIL STRATEGIC PRIORITIES**

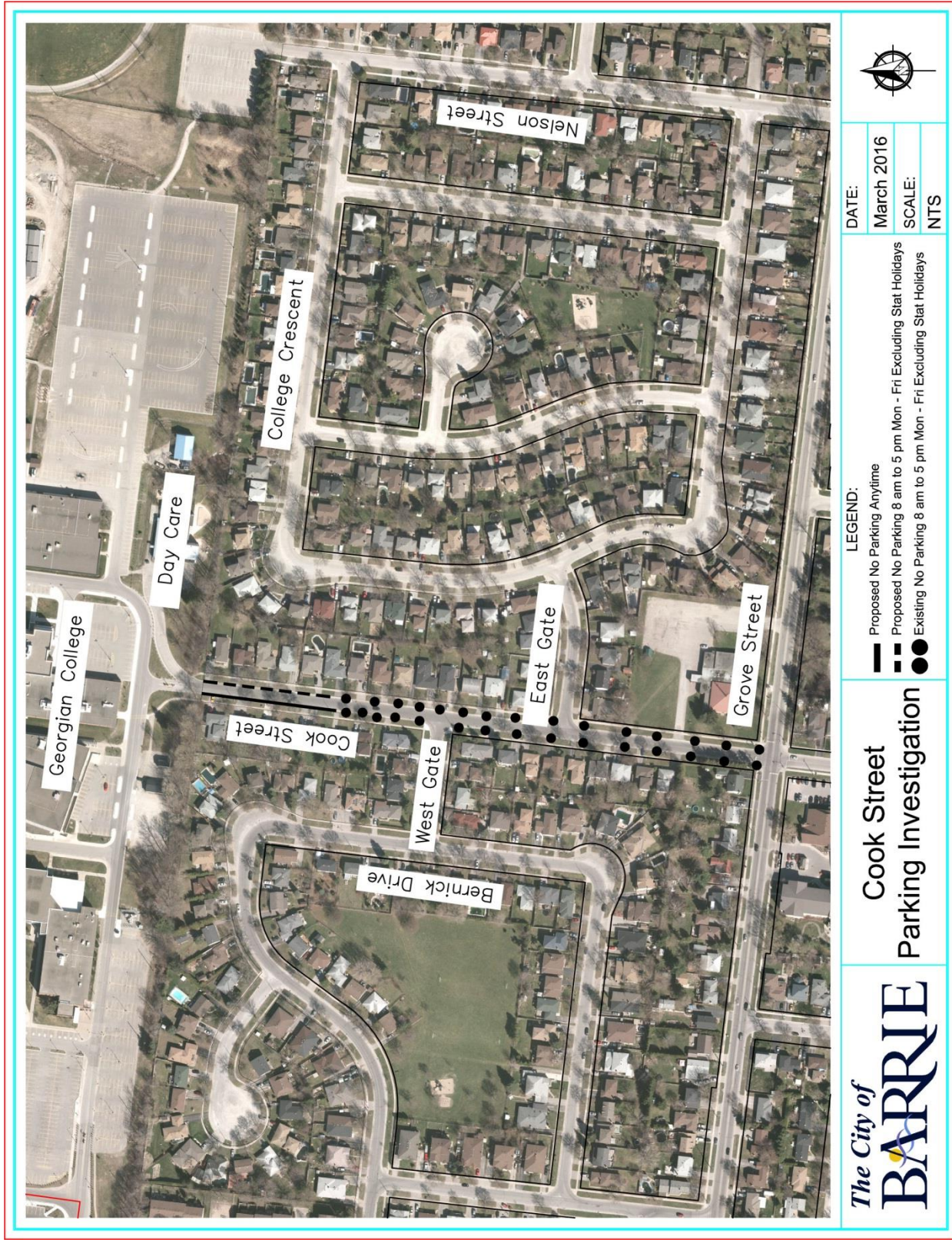
41. The recommendations included in this Staff Report are related to well-planned transportation to improve roadway safety as identified in the 2014-2018 Strategic Plan.



**APPENDIX "A"**



**APPENDIX "B"**



**APPENDIX "C"**

