

SOCIAL SERVICES FACILITIES

PUBLIC MEETING

Date: March 7, 2016

Contact: Kathy Brislin MCIP, RPP
Senior Policy Planner
ext. 4440
kathy.brislin@barrie.ca

The City of
BARRIE



1. Background
2. Existing Zoning Provisions Crisis Care
3. Draft Zoning provisions Social Services Facilities
 - Proposed Definition
 - Proposed affected zones
 - Proposed Standards
4. Next Steps

Background

- Model and Vision for Social Services



Current Zoning Provisions for Crisis Care Facilities

Crisis Care Facility Definition

Minimum Distance Separation 300m

Parking Standards - 1 space/2 persons accommodated

Zones permitted: C1, C2, I, RM2, RA1, RA2

Proposed changes

Proposed Definition

Social Services Facility shall mean a facility, which provides a variety of social support services including counseling services and which may provide recreational facilities, educational and training facilities, place of assembly, temporary lodging and serve meals, and offer day-care services.

Additional Zones Permitted

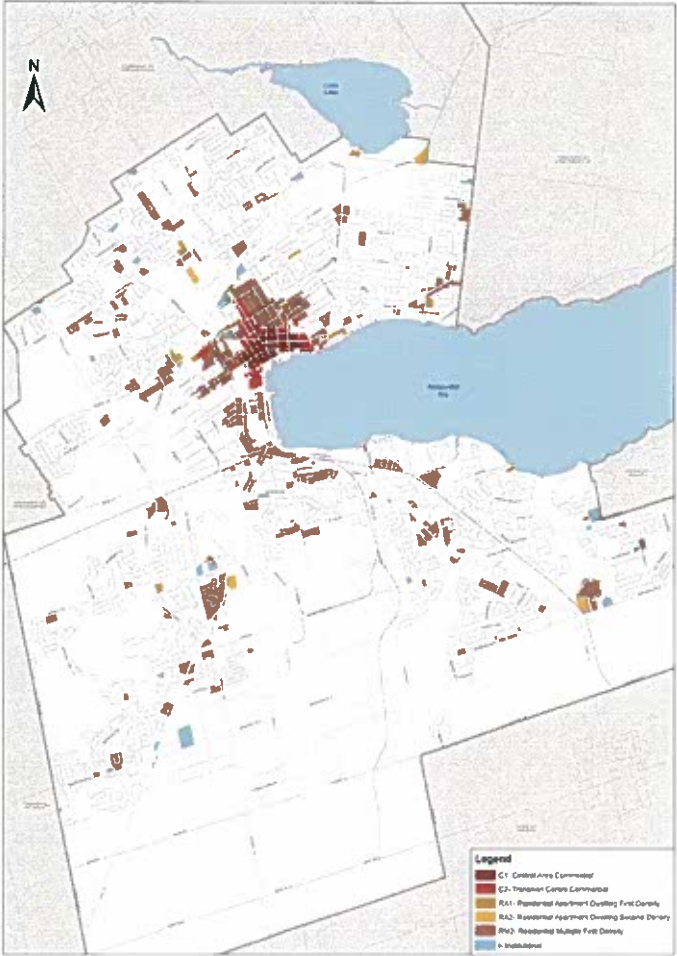
Minimum Distance Separation in Residential Zones

Parking

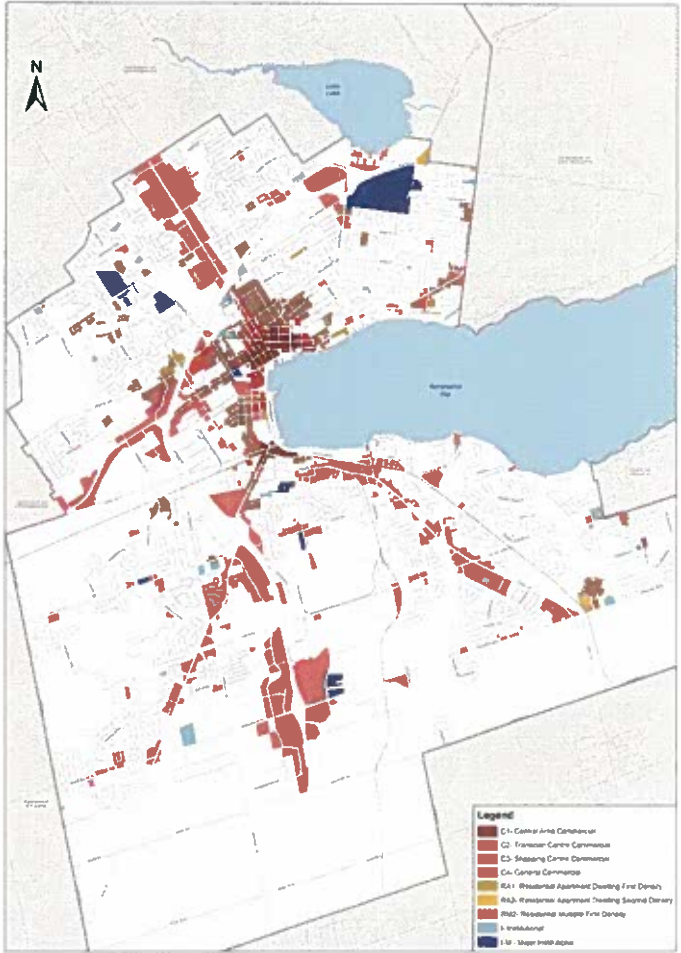


COMPARISON MAPS

Existing Crisis Care Facilities



Proposed Social Services Facilities



Next Steps

- Staff Report to General Committee.