



Heritage Park

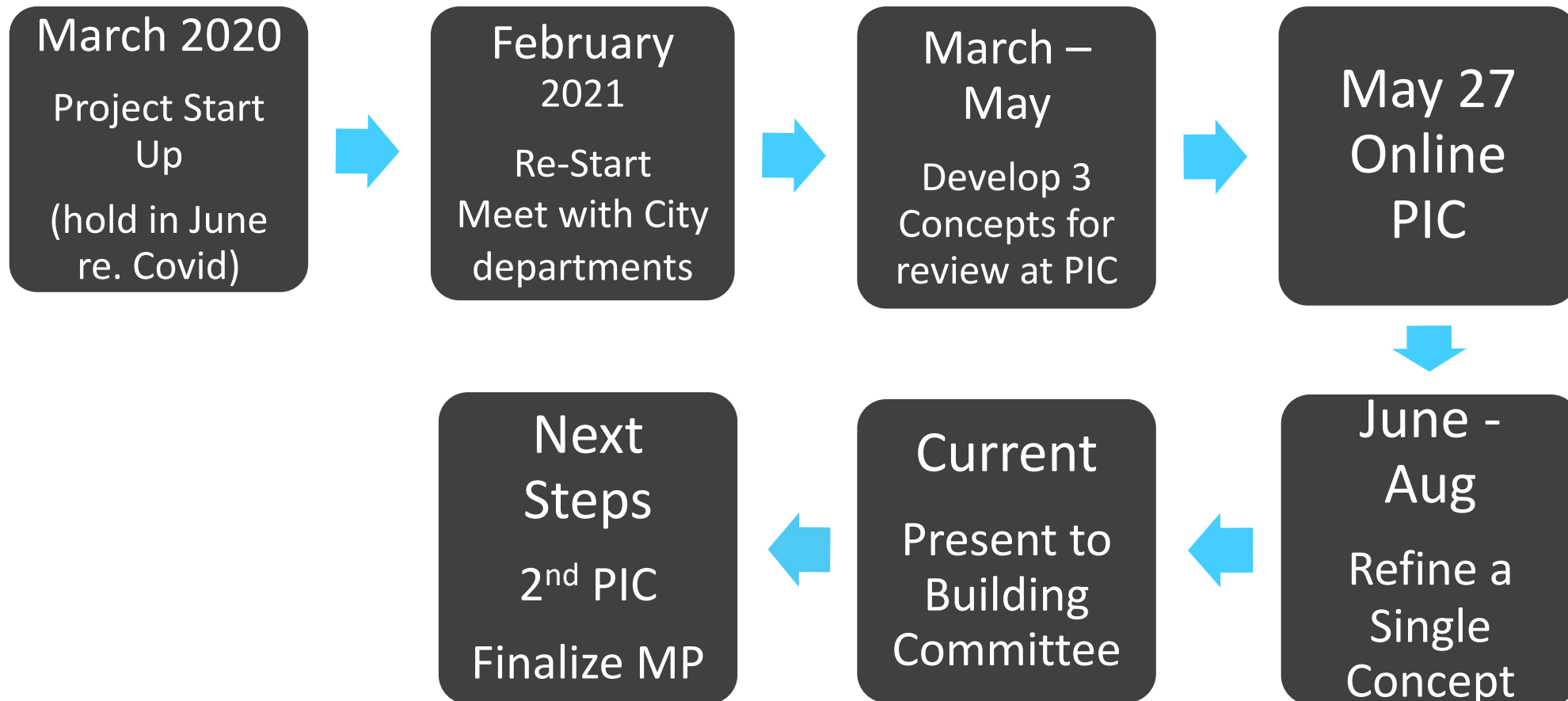
Master Plan Update to Community Building Committee

Parks Planning
October 2021

Purpose

To provide City Building Committee members with an update on the process and community engagement to date resulting from three concepts and to solicit feedback on the draft master plan before proceeding to the second community engagement event in advance of a final report to Council.

Project History



The Site

6 Simcoe Street

This is the first masterplan for Heritage Park in almost 30 years, following its original construction in the early 1990s.



Project Goals

- Design for ages 8-80 so that all are included
- Social inclusion – opportunities for all regardless of background
- Consider how the project can assist with climate change adaptation
- Create a contextually appropriate public space in a densifying urban environment
- Provide a public space that is culturally significant and of its time
- More significant connection and access to Kempenfelt Bay
- Design for use in all 4 seasons – build Barrie as a winter city
- Make necessary infrastructure upgrades during construction

3 Concepts for Public Review

- Developed 3 concepts based on increasing levels of investment – Refresh, Rehab + Rethink
- The concepts shared common elements with each building on the other adding amenities and possibilities

Refresh



Rehab



Rethink



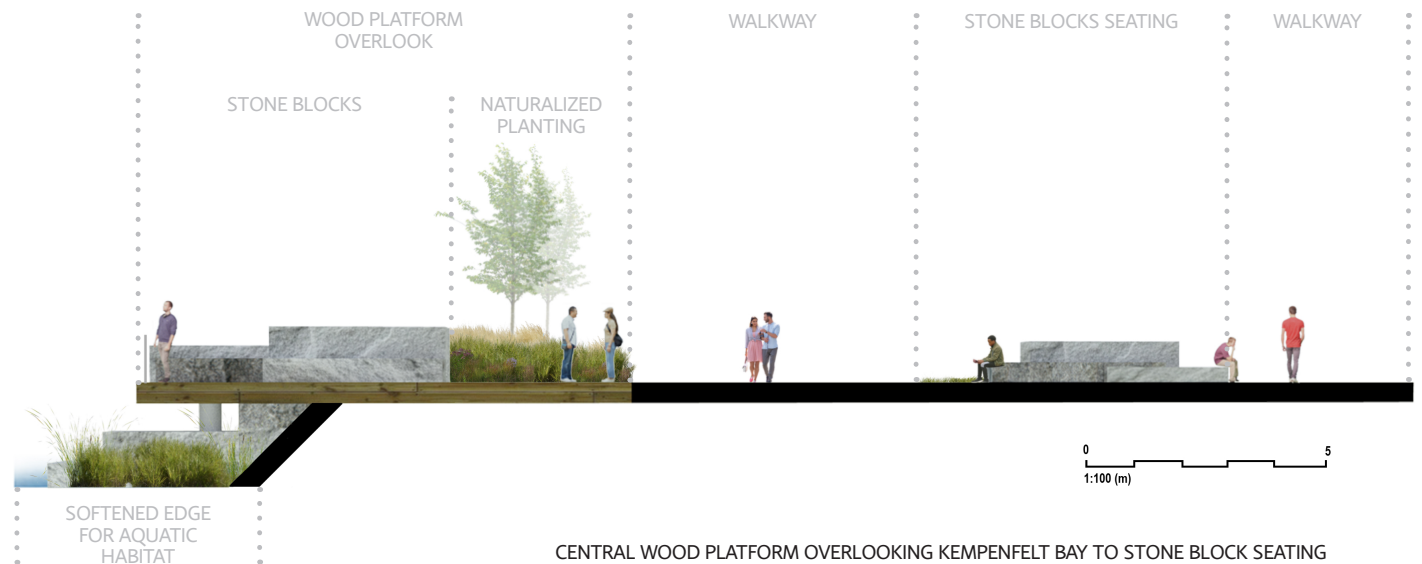
3 Concepts for Public Review

On May 27, SHIFT and City Staff hosted an online PIC:

- 2 Sessions (2-4pm and 6-8pm) with 33 and 27 unique viewer ID's.
- Following PIC, concepts were posted online along with a survey for 3 weeks (May 27th – June 14th).
- Buildingbarrie.ca site had 633 visits and 193 downloads of the concepts.
- 21 comments received during PIC (10 + 11 respectively).
- 226 surveys were completed and 5 emails received

What We Heard

Overall positive response to the revitalization of Heritage Park with resounding support for the Rethink concept, with main desires from public for design elements of **trees and gardens, updated water feature, access to the Bay and shade.**



Current Masterplan Concept



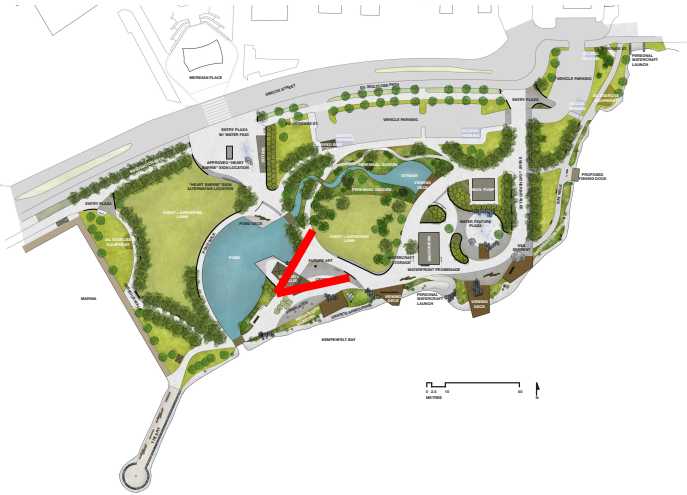
A revitalized orientation to enhance access to Kempenfelt Bay, with a multi-functional path network and expanded programming support across the park.

New shade structures, plazas, and reorganized lawns bring focus and definition to passive use and event areas. These spaces are well-connected via accessible and programmable paths. The relocated Heart Barrie Landmark Sign in the Entry Plaza has a water backdrop to the Pond and Kempenfelt Bay.



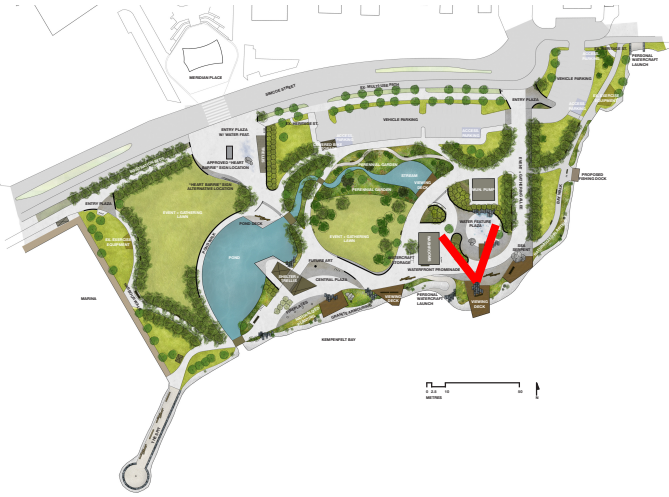


A new water feature brings the existing “splash pad” up to a contemporary standard of safety and use, while also considering it as part of a suite of plaza spaces, bringing multifunctionality and accessibility to the space.



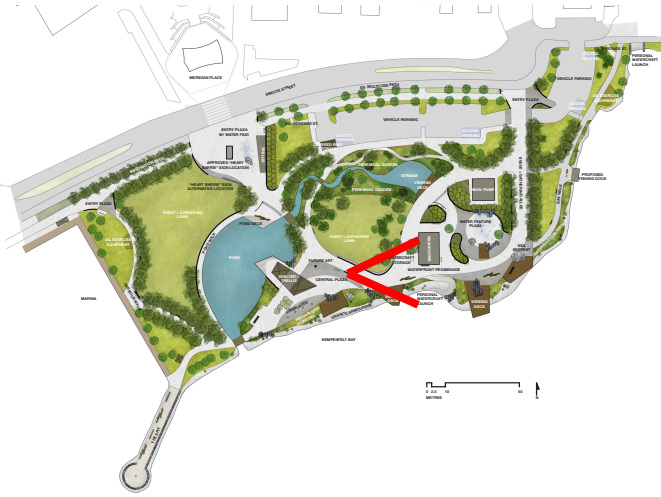
Perspective 1: Looking northeast from beneath new shade structure, featuring a public art focal point, seating areas, event lawn, and naturalized garden in the background.





Perspective 2: Looking north into the reimagined water feature, with new ways to engage with water, while functioning as a plaza for gathering with seating and shade.





Perspective 3: Looking east towards the Sea Serpent and washrooms, a widened accessible path, a watercraft launch/storage area, diverse types of seating, and ecologically enhanced planting at the shoreline.

Revitalizing Waterfronts

Trillium Park

Toronto, ON

Raised grade 1.5m,
bridge, stone work, shoreline
stabilization, washroom,
shade structure, 1200 trees,
28000 shrubs



Images: Industryous Photography, claudecormier.ca

Breakwater Park

Kingston, ON

Pathways, 'beach', public art, 'dock/
deck', bridge, shoreline reinforcement



Next Steps

- PIC # 2 –**November 25, 2021**, register for Zoom Meeting on [buildingbarrie.ca/Heritage Park](https://buildingbarrie.ca/HeritagePark)
- Finalize masterplan document and staff report – **December**
- Final to Council – **February 2022**

Questions?

