

Cumming Drive Permanent Traffic Calming

PRESENTED BY

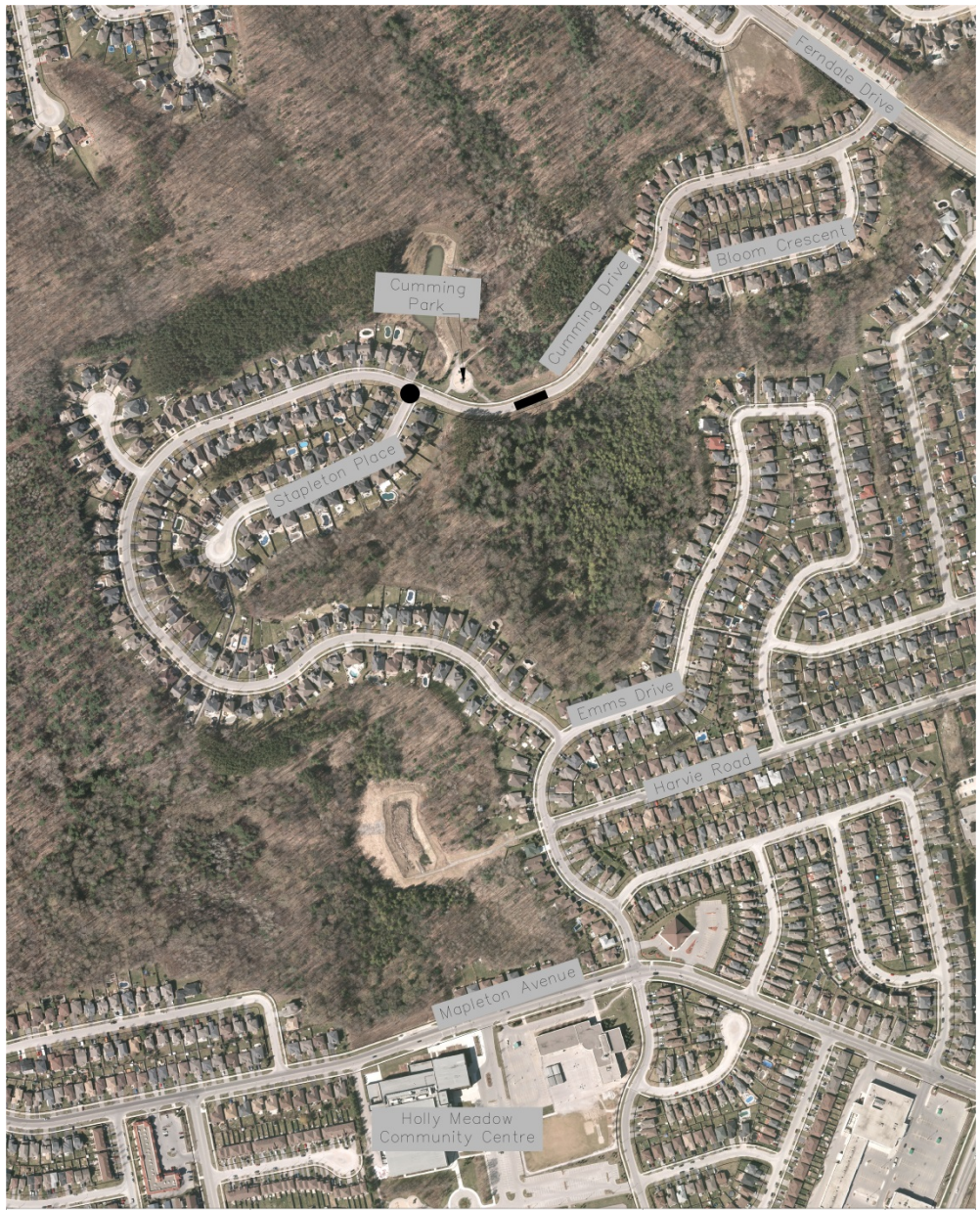
Dave Friary

Roads, Parks and Fleet

Thursday, May-12-16

The City of
BARRIE





Legend:

- Raised Intersection
- Curb Extension



Historical Studies

Speed Studies:

- 2007 avg speed 58 km/hr
- 2008 avg speed 54 km/hr
- 2012 avg speed 52 km/hr
- 2013 avg speed 52 km/hr

All-way Stop Studies:

- 2008 not warranted, not supported by resident survey
- 2013 not warranted, not supported by resident survey

Sightline Study:

- 2013 (reconfirmed 2016) sightlines do not warrant all-way

Historical Studies cont'd

Origin/Destination Studies (cut-through)

- December 2012
 - 50% of the traffic on Cumming was “cutting through”
 - Without traffic calming in place
- July 2013
 - 20% of the traffic on Cumming was “cutting through”
 - With traffic calming in place

Temporary Traffic Calming Measures

- 2010-2014 speed cushions on Cumming
- 2015 bollard curb bump out