

# Corporate Asset Management

---

Kelly Oakley, P. Eng.

General Committee-December 7, 2022



# Agenda

---

CAM Department Overview

Why Asset Management?

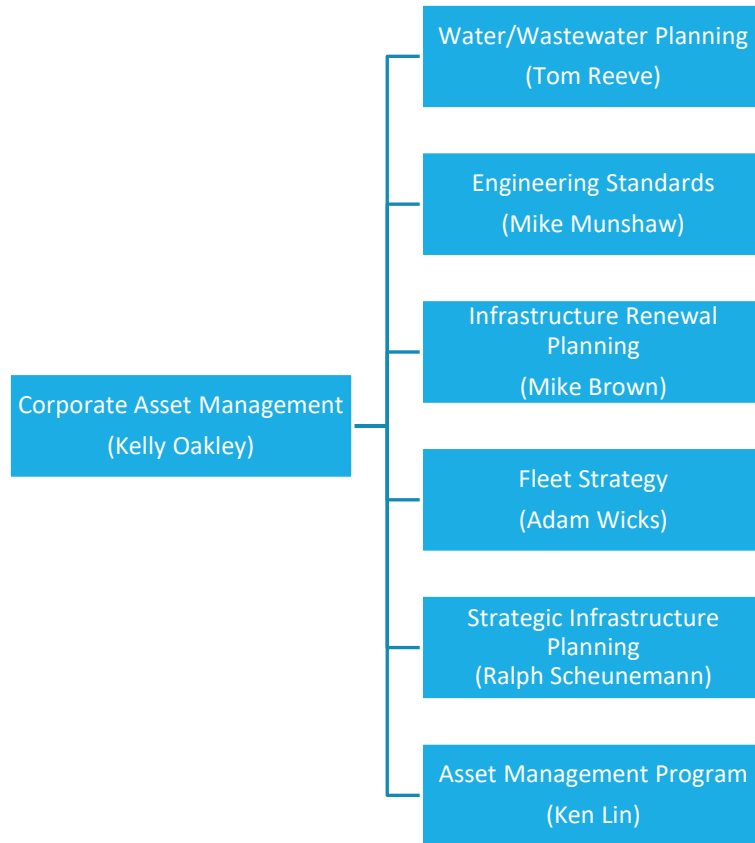
Infrastructure Renewal Planning

Planning for Growth

Fleet Transformation

Key Takeaways

# CAM Department Overview

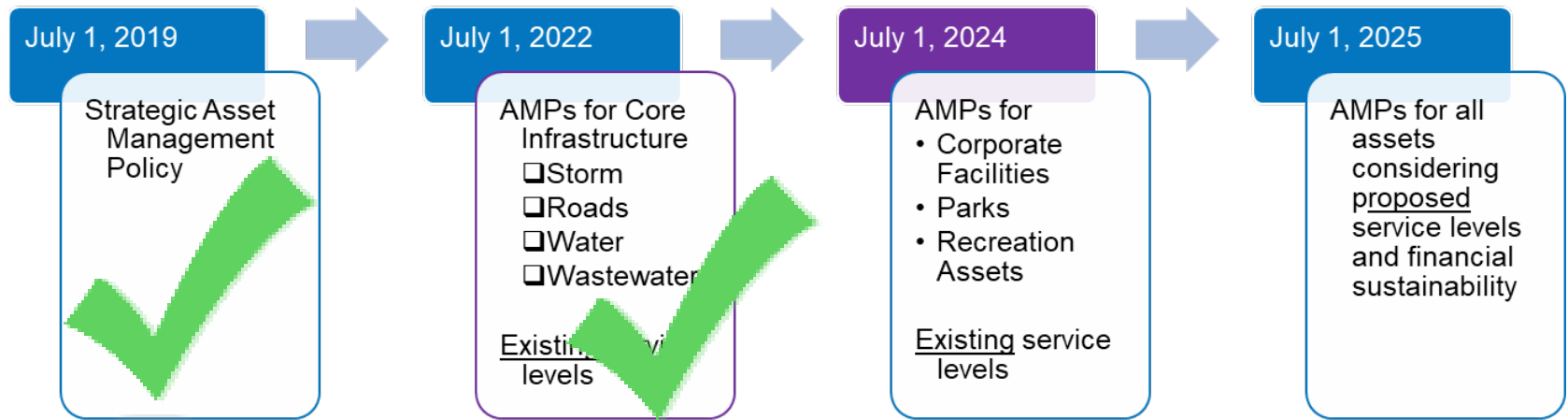


- CAM coordinates the advancement of asset management initiatives across the City.
- Our team establishes infrastructure standards, and plans for the renewal and growth of infrastructure and fleet

# Advancing Asset Management

Asset Management is a proactive approach that considers both immediate and long term asset maintenance, renewal and expansion.

Tools, data, and planning help us make informed decisions about where and when to spend our capital and operating dollars, and ways to optimize our investment.

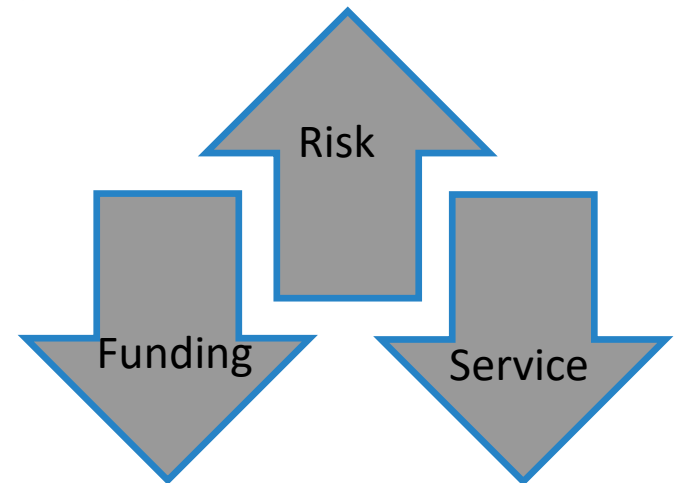


# The Infrastructure Investment Gap

**Infrastructure Investment Gap** - the difference between the funding the City invests each year through our budgets, and the amount that is needed to look after what we own and ensure we can build what is needed to grow.

The results of underinvesting in assets are reduced service levels and more risk.

- more water main breaks
- parks or rinks out of service
- flooding
- poor road conditions
- expensive emergency repairs

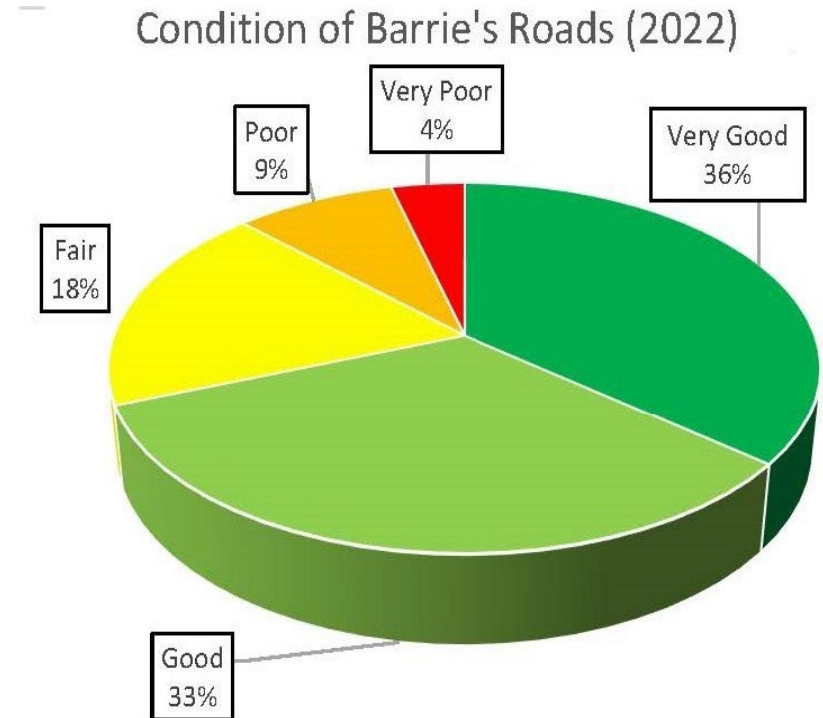


# Infrastructure Renewal Planning – Looking after what we own

The City owns over \$1 billion each of transportation, water, wastewater and stormwater assets.

Using data about condition, age, risk, we develop and prioritize capital projects for inclusion in the capital plan.

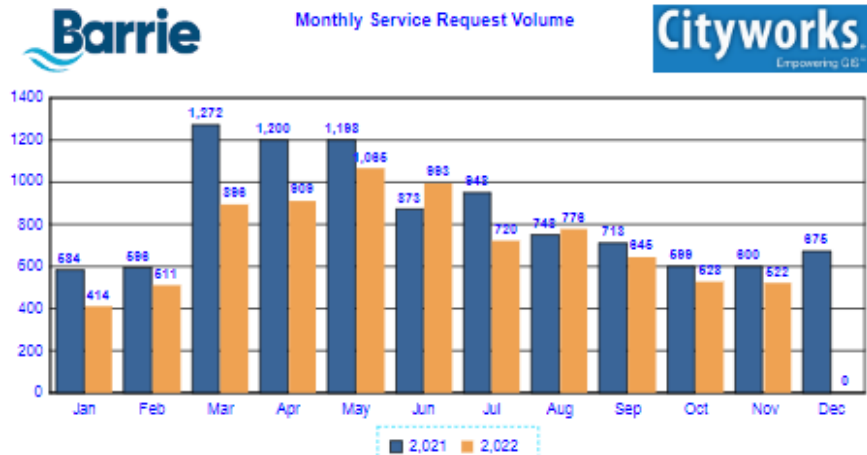
We use a number of strategies to ensure we are doing the right thing to the right asset at the right time.



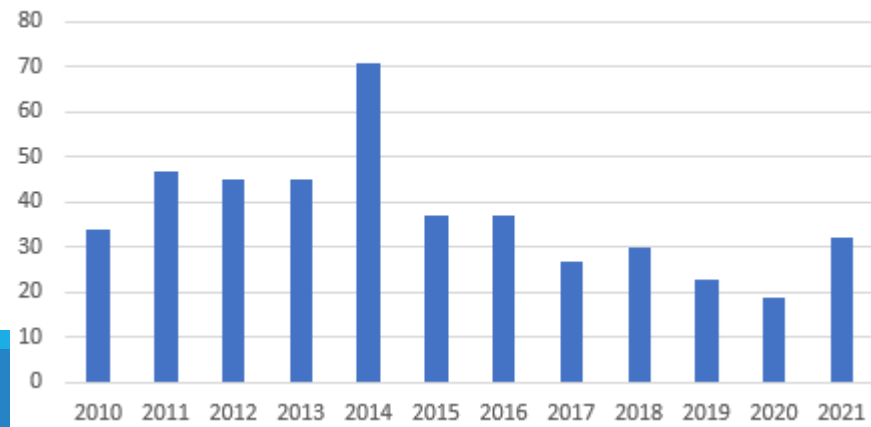
# AM in Practice – Computerized Maintenance Management Systems

The City uses Computerized Maintenance Management Systems to plan and track work against our assets.

- Cityworks – all water assets, roads, sewers, ponds and parks
- Archibus – facilities
- Megamation – wastewater treatment plant
- CFA Win – fleet



Number of Watermain Breaks per Year



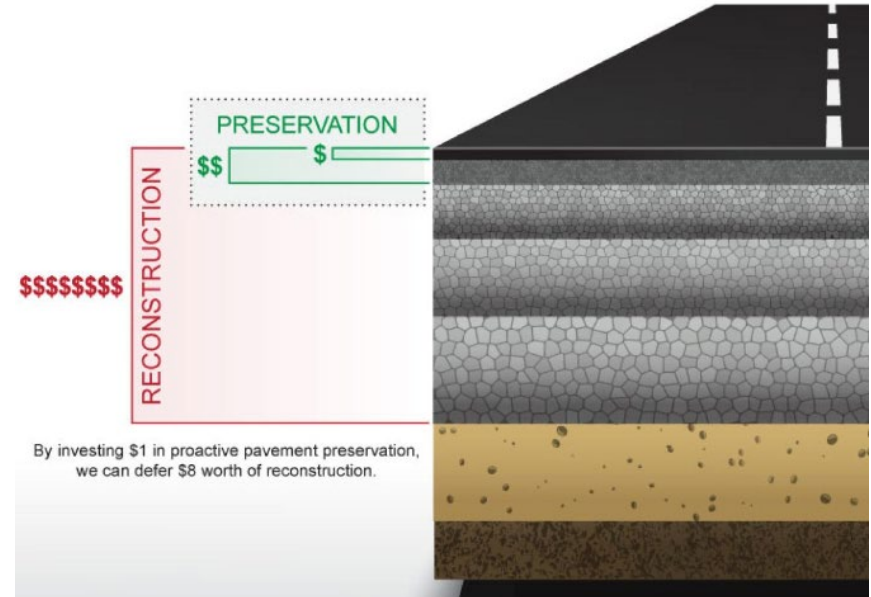
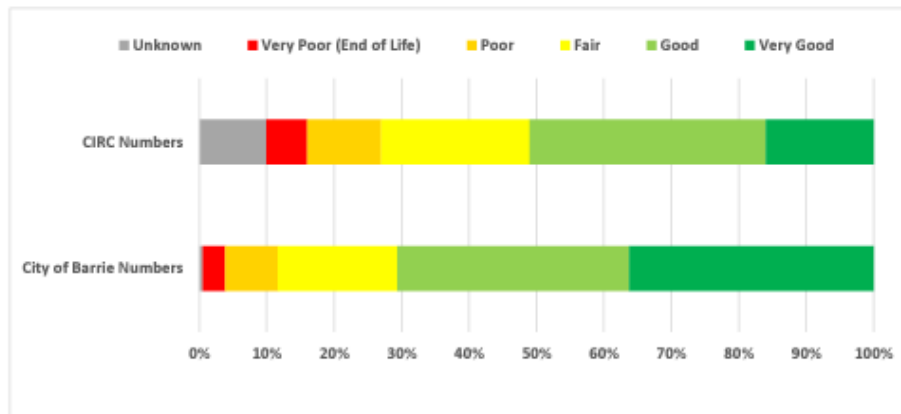
# AM in Practice – Pavement Management

The City regularly collects data on the condition of the City's pavement.

The City's average pavement condition index is 77 out of 100.

Being proactive can save money and keep roads in better condition.

**Figure 11 - Barrie Transportation Asset Condition vs. National Average**



More information is available at:

[www.barrie.ca/PavementManagement](http://www.barrie.ca/PavementManagement)

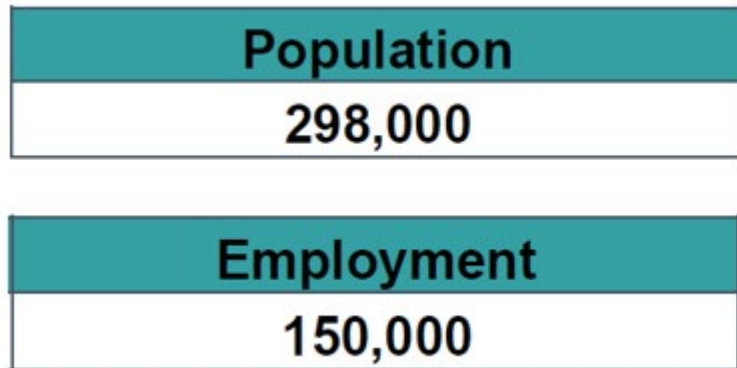


# Infrastructure to Service Growth – Master Plans & Modelling

Master plans determine the infrastructure that is needed for Barrie to grow.

Growth projects make up over 40% of the City’s capital plan.

Models provide tools for staff and developers to run scenarios and choose the best infrastructure solutions.



City of Barrie Growth, 2021 to 2051



# Fleet Strategy

---

The City owns 400+ vehicles and pieces of equipment at varying stages of their lifecycles; most are diesel/gas powered.

In order to better plan for our fleet, we are upgrading our fleet management system.

Climate change requires us to rethink the types of energy that we use; and we are developing a plan to convert the City's fleet to electric.

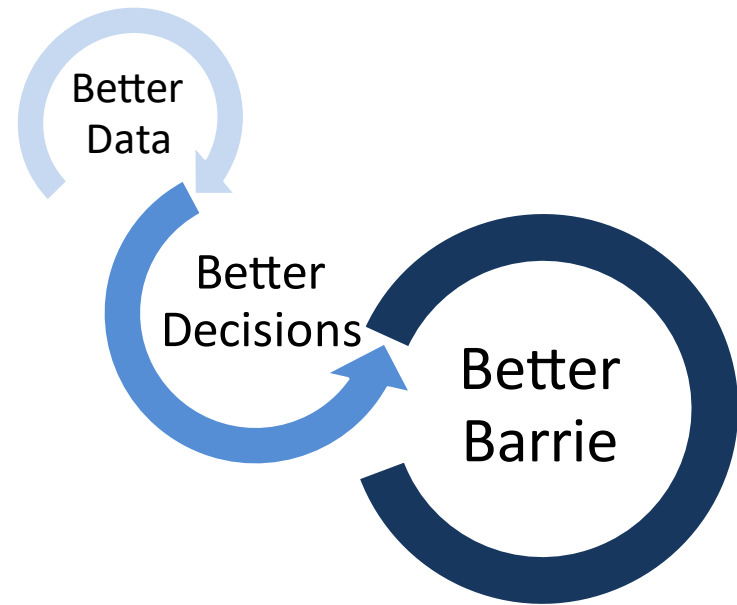


Electric ice resurfacers are now in use at East Bayfield CC

# Key Takeaways

---

- Asset management is a journey
- Addressing the infrastructure gap by being proactive
  - Preventative and planned maintenance costs less than emergency repairs
- Data is king!
  - Tools and technology help us manage data, and better data leads to better decisions
- It's all about balance
  - We must look after what we own as we also plan for growth
- We are all doing asset management



# Thank you!

---