



TO: INFRASTRUCTURE AND COMMUNITY INVESTMENT COMMITTEE

SUBJECT: BARRIE ALLANDALE TRANSIT TERMINAL PUBLIC ART COMMISSION

WARD: 8

PREPARED BY AND KEY CONTACT: C. RYAN, PUBLIC ART COORDINATOR, EXT. 5293

SUBMITTED BY: S. SCHLICHTER, DIRECTOR OF ECONOMIC AND CREATIVE DEVELOPMENT

NOTED: R. PEWS, P.ENG., DIRECTOR OF CORPORATE FACILITIES

GENERAL MANAGER APPROVAL: B. ARANIYASUNDARAN, P.ENG., PMP, GENERAL MANAGER OF INFRASTRUCTURE AND GROWTH MANAGEMENT

CHIEF ADMINISTRATIVE OFFICER APPROVAL: M. PROWSE, CHIEF ADMINISTRATIVE OFFICER

RECOMMENDED MOTION

1. That the artwork, Exhale, by Studio F Minus, as shown in Appendix “A” to the Report to the Infrastructure and Community Investment Committee dated January 24, 2024, concerning the Barrie Allandale Transit Terminal Public Art Commission for the public art commission, be approved as the selected artwork for the proposed Barrie Allandale Transit Terminal (Corporate Project #FC1206).
2. That the Mayor and City Clerk be authorized to execute agreements relevant to the installation satisfactory to the Director of Legal Services, the Director of Economic and Creative Development and the Director of Corporate Facilities.

PURPOSE & BACKGROUND

3. The purpose of the Report is to notify Council of the results of the juried Barrie Allandale Transit Terminal Public Art Competition facilitated by the Public Art Coordinator. Please see the attached Appendix “A” attached to Report to Infrastructure and Community Investment Committee dated January 24, 2024 for the winning submission, *Exhale*, by Studio F Minus.
4. The City of Barrie approved a Public Art Policy in 2012 which was amended in 2021. As per Section 5: Roles and Governance the public art policy states: *Barrie City Council approves the final acceptance of all permanent public artworks commissioned by or donated to the City of Barrie as endorsed by the Barrie Public Art Committee, as well as annual budgets for the maintenance and cleaning of the City’s public art collection.*
5. The Role of the Public Art Coordinator in this project was to act as a subject matter expert and support the Corporate Facilities team by facilitating the selection process for the final artwork.
6. On July 4, 2023, City staff conducted a public call for prospective artists through a Request for Expressions of Interest. Forty-six submissions were received.

7. The Public Art Coordinator facilitated a jury of three third-party stakeholders representing the MacLaren Art Centre, Art@RVH and a locally based professional public artist, who reviewed the forty-six submissions from artists across Canada. Four artists or artist teams were selected to enter into Stage Two of the competition. Those artists then submitted their technical proposal and conceptual design of proposed artworks to be reviewed by a re-selected jury. The Stage Two jury included representatives from the Allandale Neighbourhood Association, Diamond Schmitt Architects Incorporated, the lead consultant of the project, and a Public Art Curator.
8. The winning artist team, Brad Hindson and Michael Simon, known as Studio F Minus, are based in Toronto. They have completed public art projects in British Columbia, Alberta, and Ontario. Key public art installations include *Composition for Wind*, Toronto, ON, *Reflections* in Pickering, ON, *Marigold* in Edmonton, AB, and *United Nations Peacekeeper's Monument* in Peterborough, ON.

ANALYSIS

9. The Request for Expressions of Interest included a design brief and artwork goals that resulted from a public survey conducted in February 2023. Some primary themes emerged, such as references to the Allandale neighbourhood, including but not limited to, railway heritage and Indigenous history. The design brief also required the piece to be durable with respect to the elements, and for maintenance requirements to be minimized. The selected concept by Studio F Minus meets all the criteria of the design brief, including the available budget.
10. The location of the artwork in the outdoor plaza at the Barrie Allandale Transit Terminal was pre-determined by the site design. The location for the commissioned piece was included in the design brief so that the artwork was designed specifically for this site.
11. The full proposal for the winning concept was reviewed by the Stage Two jury, which includes representatives from the Allandale Neighbourhood Association, a Public Art Curator, and the project consultant from Diamond Schmitt Architects Incorporated. There was a recognition that the height of the art piece may impact the lines of sight to the main building signage and upon further review may require an increase in height to ensure there is no impacts to view signage from Essa Road or the plaza. Studio F Minus advised that an increase in height, at no additional cost can be accommodated and their proposal can be adjusted during the art piece design finalization and engineered drawings phase.
12. The winning submission speaks to “memories of breath, steam and campfire smoke” as described by the artists. Studio F Minus’ concept addresses the intended site as a place of arrival, whether it is your home, vacation destination or rest stop along a journey. *Exhale* announces that you have arrived and can finally take a deep breath and let everything else go.
13. The piece will be a monumental shimmering, kinetic cloud sculpture. Proposed at 6.8 m high and subject to adjustment as noted above, it will be made of approximately 240 individual mirror finished stainless steel paddles connected to a stainless-steel armature, perched atop two painted structural steel poles. The paddles will rotate and respond to wind while also reflecting the colour of sky at different times of day. The shadows cast by the artwork extend the reach of it and animate the plaza over the course of the day. Studio F Minus advised that reflections will not affect the adjacent roadway and will ensure the final design meets safety requirements.
14. The advanced planning for this artwork will allow for installation to coincide with construction and no additional site disruption is required. If approved, the artwork will be installed in 2025 as part of the construction project scope.
15. The planned installation of this artwork aligns with the unveiling of the Public Art Strategy and Culture Master Plan Update that will commence in 2024.

ENVIRONMENTAL AND CLIMATE CHANGE IMPACT MATTERS

16. The following environmental and climate change impacts matters have been considered in the development of the recommendation:
- a) The selected placement of artwork at the Barrie Allandale Transit Terminal site is an area sized and incorporated into the design for the intent of installing public art.
 - b) The artist will undertake all installation activities in accordance with City and regional environmental and permitting authorities, including Metrolinx.

ALTERNATIVES

17. The following alternatives are available for consideration by General Committee:

Alternative #1

General Committee could deny the proposed recommendation and disapprove of the selected piece.

This alternative is not recommended as it would require Staff to relaunch the call for submissions and convene a new jury, delaying the project by six months or more and no longer aligning with construction schedule.

Alternative #2

General Committee could choose to defer the installation of any public art on the site at this time.

This alternative while available for Council's consideration is not recommended. As per the City of Barrie Official Plan 2051, section 3.2.4.9 Public Art states: *The City will promote the provision of public art in publicly accessible areas. Public art is encouraged to be incorporated into buildings, infrastructure, or landscapes to contribute to interesting and memorable places for residents and visitors alike. Nevertheless, should Council choose this option, staff recommend proceeding with the installation of a structural base as part of the Transit Hub construction project that will allow the future installation of a public art piece on site. This will minimize future disruption to a busy operational transit hub site.*

FINANCIAL

18. Funding for the public art commission at the Barrie Allandale Transit Terminal was approved within Corporate Project #FC1206. \$100,000 of the installation budget is funded by the Investing In Canada Infrastructure Program (ICIP) and \$50,000 is covered by the approved project budget. There are no new financial implications for the Corporation resulting from the proposed recommendation. An additional ten percent of the total budget is dedicated to maintenance of the work and will be held in the public art reserve which was funded by the project budget.

LINKAGE TO 2022-2026 STRATEGIC PLAN

19. The recommendations included in this Staff Report support the following goal identified in the 2022-2026 City Council Strategic Plan:
- Thriving Community – foster growth in arts and culture
 - Community Safety – support neighbourhood safety and crime prevention
 - Infrastructure Investments - support active transportation and pedestrian connections
20. Public art is a key component of placemaking, public space animation, civic pride, and strong neighbourhoods. The Barrie Allandale Transit Terminal will be a hub for our local community and visitors alike. The addition of *Exhale* will serve as a welcoming landmark for all who encounter it.
21. The City of Barrie's public art collection has grown and evolved in recent years. The inclusion of *Exhale*, a contemporary sculpture unique to our community and its history, will enhance the tourism draw and add to the progressive reputation of our public art collection and projects.

APPENDIX "A"

Winning Design Submission by Studio F Minus

EXHALE:

MEMORIES OF BREATH, STEAM
& CAMPFIRE SMOKE

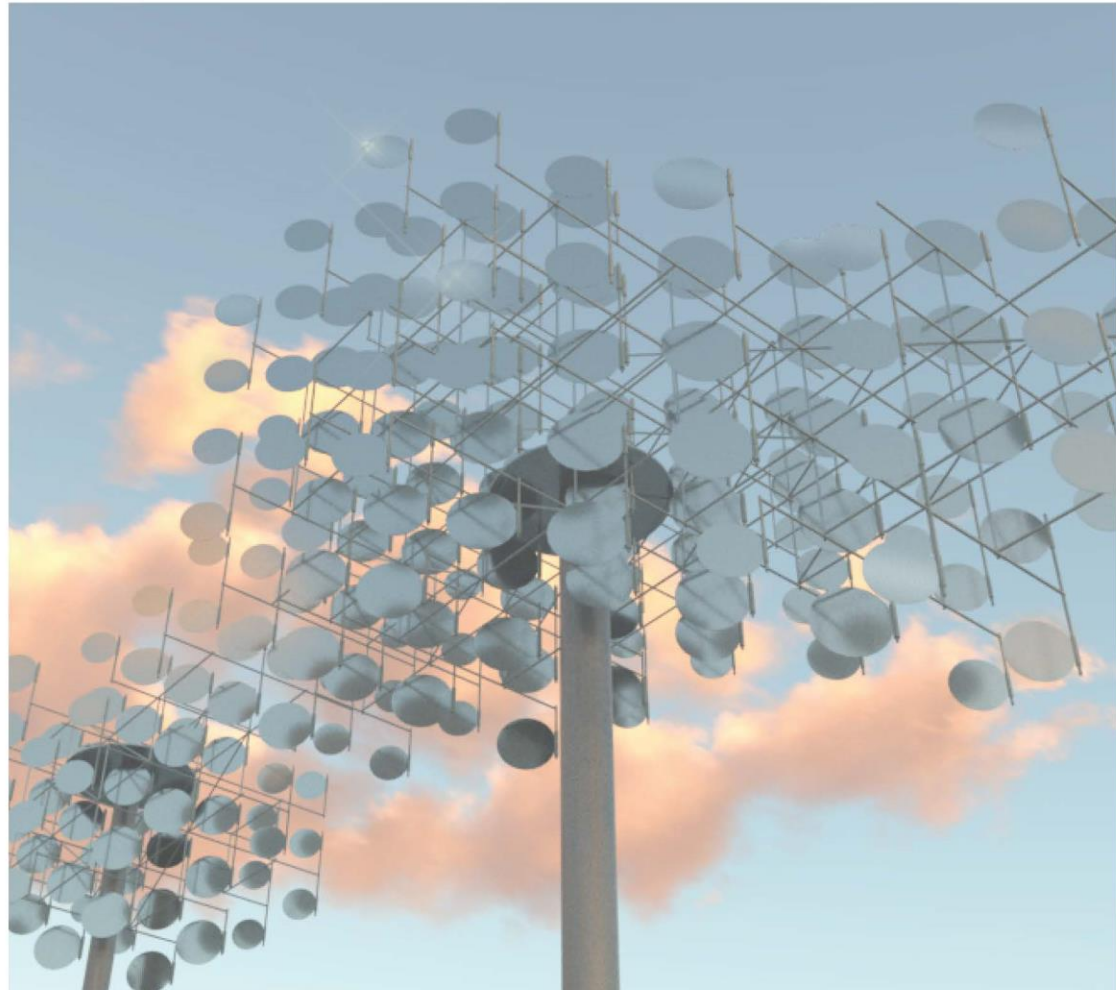
A PUBLIC ART CONCEPT & TECHNICAL PROPOSAL FOR
THE ALLANDALE TRANSIT TERMINAL
BARRIE, ONTARIO

NOVEMBER 29, 2023

STUDIO F MINUS

www.studiofminus.com

brad@studiofminus.com
(416) 799-3932
511 Clinton St. Toronto, ON



CONCEPT

We, Studio F Minus, guarantee that "Exhale", the proposed artwork presented in the pages of this document, is original and does not violate the copyright of any other person.

EXHALE... YOU'VE ARRIVED!

Whether you call the beautiful city of Barrie your home, your vacation destination, or even just a much-needed rest spot along the way, "Exhale", is a monumental, shimmering, kinetic cloud sculpture that announces that you've arrived, and you can finally take a deep clean, cool breath and let everything else go.

Inspired by the long history of the site as a traditional meeting place of indigenous and settlers alike, "Exhale's" elongated flowing form can be interpreted as:

- A breath of cold air expelled during a friendly greeting
or,
- A plume of vapour billowing from the stack of one of the steam engines for which this was an integral stop
or,
- The rising smoke of a campfire stoked to warm weary travellers
or,
- A viewer may interpret the artwork in their own unique way.

In any case, the exciting, contemporary form announces to visitors, commuters, and residents that the new Allandale Transit Hub, and by extension the city of Barrie, is a welcoming and exciting place to be.





DESIGN

Upon approaching the new transit building, whether by GO, local bus, or car, from Essa Road or on foot or bicycle from the multi-use path, “Exhale” will serve as an undeniably eye-catching landmark.

Hovering roughly 3.5m above the plaza at its lowest point, and floating to 6.8m at its loftiest, this 8.4m long (hypotenuse of the 6m x 6m art zone) glistening cloud will stand as a vibrant, proud point of arrival.

In our art practice we love to play with the common expectations and experiences of natural phenomenon, like sunlight, wind, and everyday materials. “Exhale” effectively turns the generally held view of stainless steel as a tough, heavy, neutral-coloured, industrial material on its head by bringing it to life with movement and colour via these natural elements.

How we perceive this sculpture, its colour, opacity, even its form, shifts constantly, from season to season, day to day, hour to hour, even moment to moment, providing novel experiences for the most regular commuter and a mesmerizing reason for return trips for tourists.

The sculpture does this by conceptually mimicking the way light reflects and refracts through the tiny molecules in a cloud of breath, smoke, or steam. “Exhale” is composed of more than two hundred and forty mirror polished stainless-steel paddles (or molecules). There are two sizes of these paddle, the larger ones make up the majority and are concentrated towards the centre of the cloud’s mass while the smaller paddles are arranged around the edges where the cloud begins to visually dissolve.

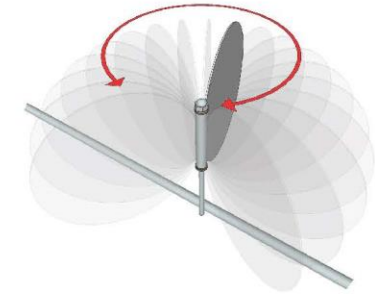
LIGHT & WIND

Because of the sculpture's reflective quality and the low angled point of view of the observer, the typically silver-grey metal instead appears bright blue on a sunny summer day, pink and purple in the early morning, orange and red in during the fall sunsets, or even star filled on a clear night.

In addition to its chameleon-like colour changing, the sculpture is also animated by air movement.

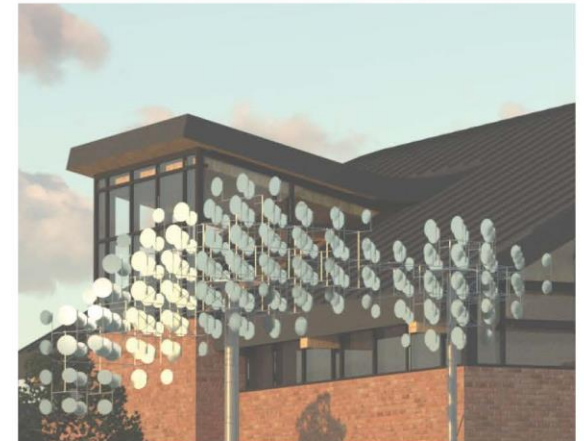
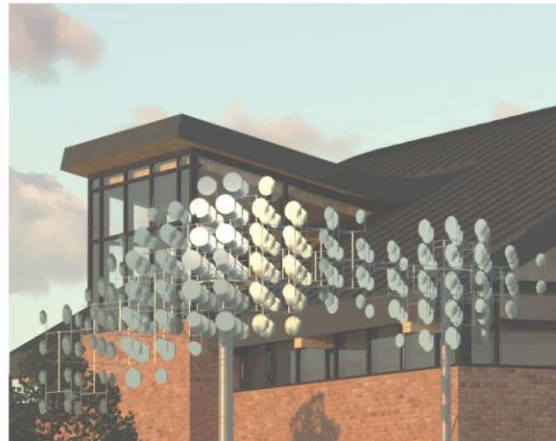
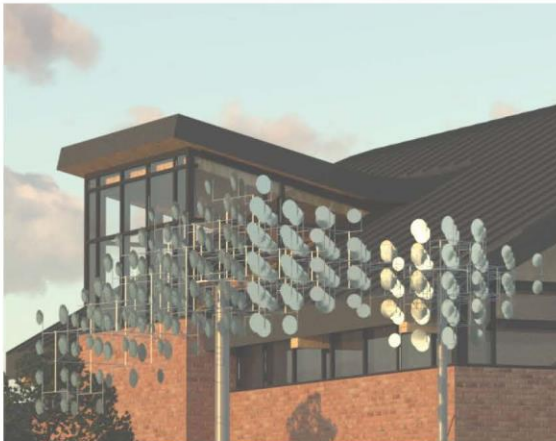
On a calm day the paddles flutter silently in the lightest breeze, like leaves on a tree. In more turbulent weather, they become more animated as sudden gusts flow through them like a tidal wave, or a shift in wind direction rotates all the paddles as a group so that the cloud almost disappears completely.

The effects of wind and light are not independent, the combination of the two phenomena combine to cause subtle sparkles of light across the sculpture like those on the surface of a rippling lake.



WIND PADDLE ROTATION

The paddles rotate freely and quietly in response to even the lightest wind.



The three images above depict a gust of wind blowing through the sculpture, creating a shimmering wave of sky tones.

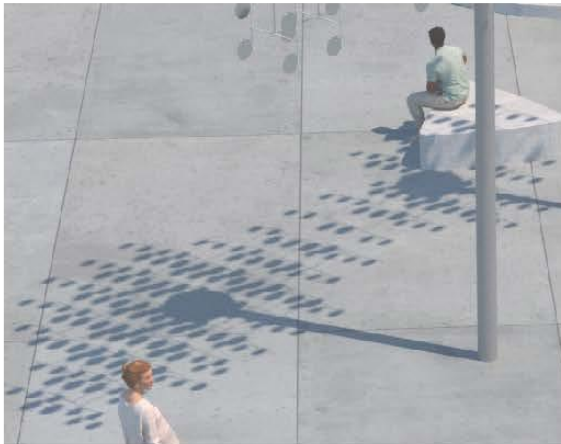
SHADOW & TIME

This animated dialogue between wind, light and sculpture will also project down to the surface of the plaza, where the shadows and dappled light will dance on the paving and seating areas below – resulting in a lovely place to sit, and take a moment, reflect and Exhale.

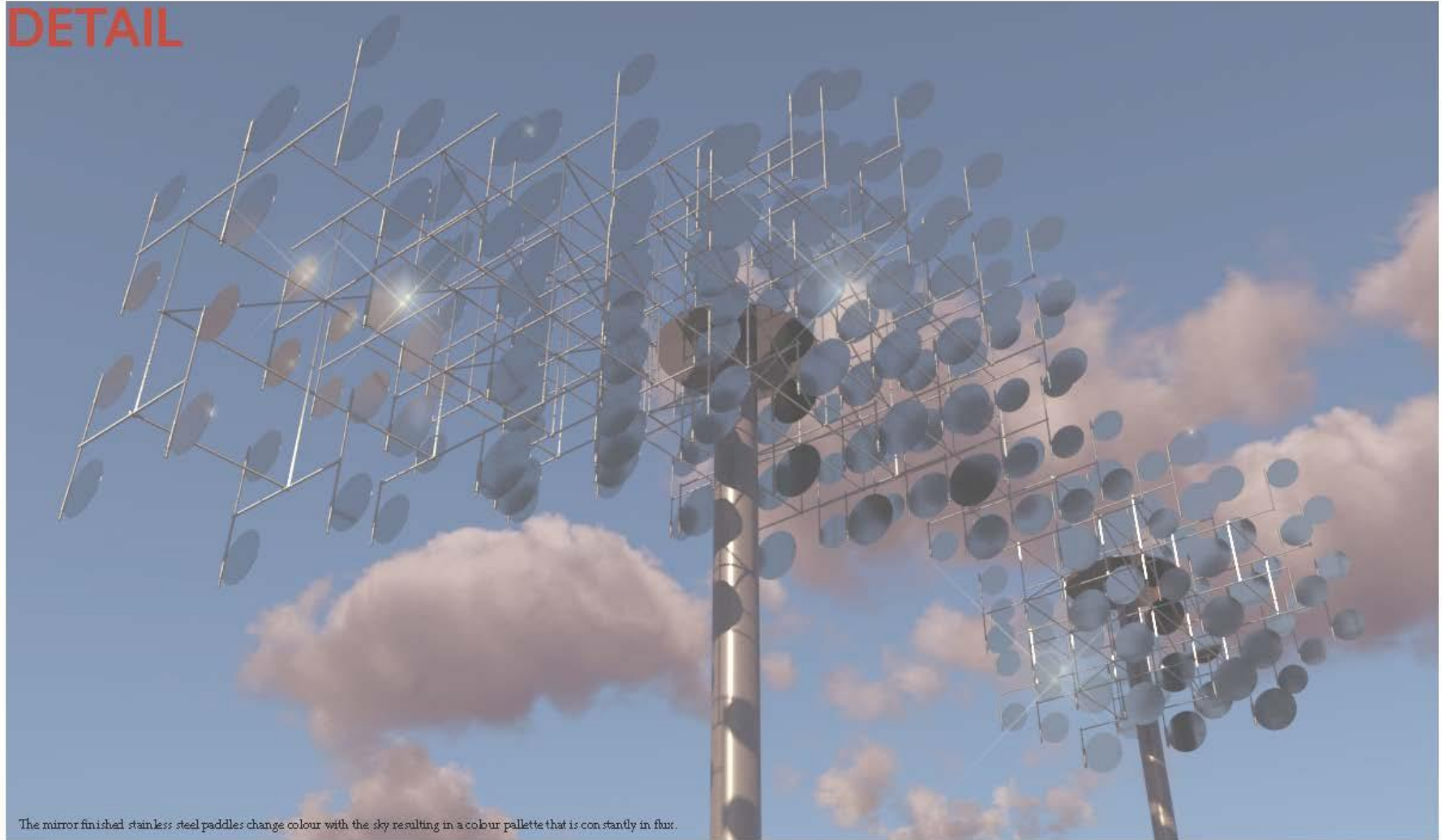
In summary, we are very excited to propose “Exhale” for installation alongside the new Allandale Transit Hub.

“Exhale” will be a strong addition to Barrie’s substantial portfolio of public art, as it references the collection’s embrace of monumentally scaled work and pallet of robust materials, while simultaneously pushing the expectations of those traditional qualities in a way that results in a sculpture that is light, airy, and whimsical.

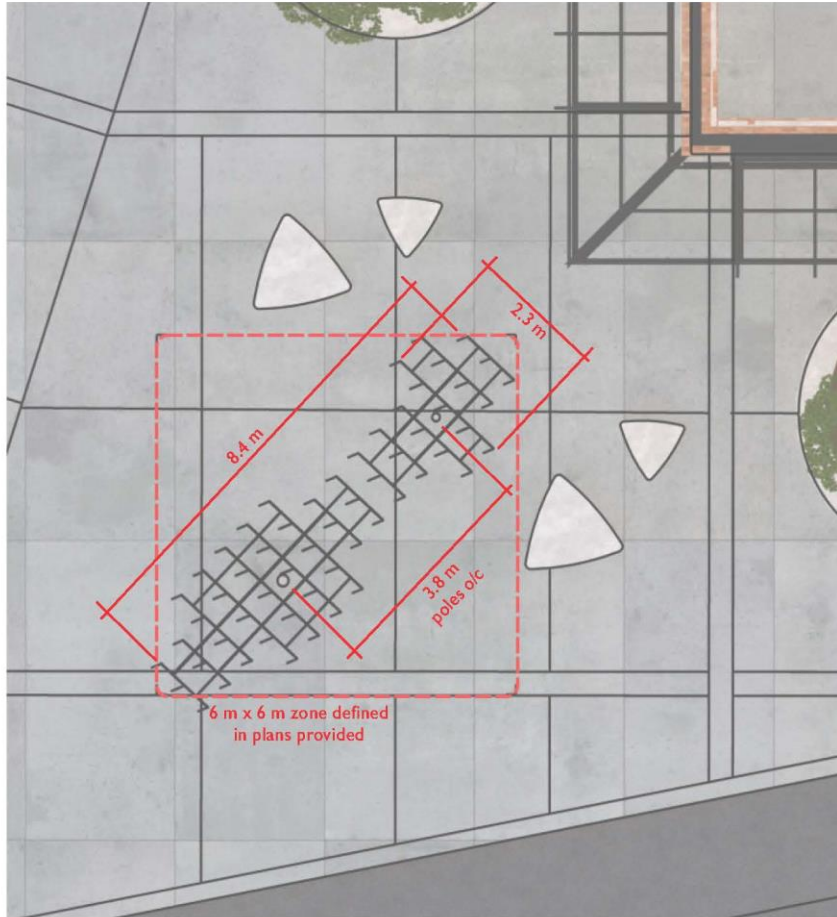
We feel it will quickly become a character landmark for Barrie, as it celebrates the city’s welcoming character and history to visitors and residence alike.



Graphic shadows extend the reach of the art work down onto plaza, animating it over the course of the day and creating dappled shade over the seating areas.



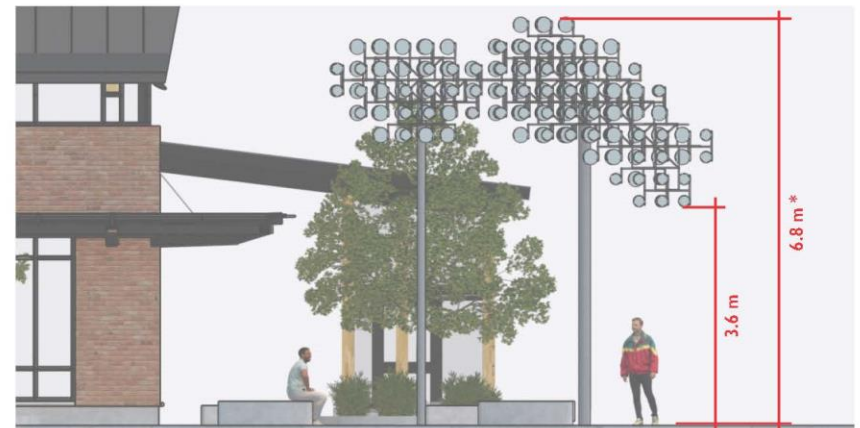
PLAN & ELEVATIONS



PLAN



SOUTH ELEVATION



WEST ELEVATION

*NOTE: The height of the sculpture can be adjusted to fit within to 6m limit if preferred.

MATERIALS & FABRICATION

“Exhale” is made up of roughly two hundred and forty individual, mirror-polished, stainless-steel, weather-vane-like paddles. All the paddles are connected to a brushed-finish stainless-steel armature, perched atop two painted, structural steel poles, which in turn are anchored to reinforced concrete piers.

The entire sculpture is virtually maintenance free, both because its almost completely out of reach for graffiti and tampering and because of its mindful detailing. The paddles consist of only three simple parts: 1. A round stainless-steel disk welded to a brushed stainless-steel tube 2. A pair of outdoor rated, extremely long wearing, silent, dry sleeve bushings, pressed into either end of the stainless tube and 3. Stainless-steel spindles, welded to the grid structure, that allow the bushings to rotate effortlessly.

Unlike traditional bearings, these dry bushings don’t require maintenance and they can’t seize or squeak. Although they have been qualified by the manufacturer for decades of continual use, and tested in our past work “Composition for Wind”, in the case that they ever do need replacement they can be simply pressed out and replaced without detriment or substantial down time to the rest of the sculpture.

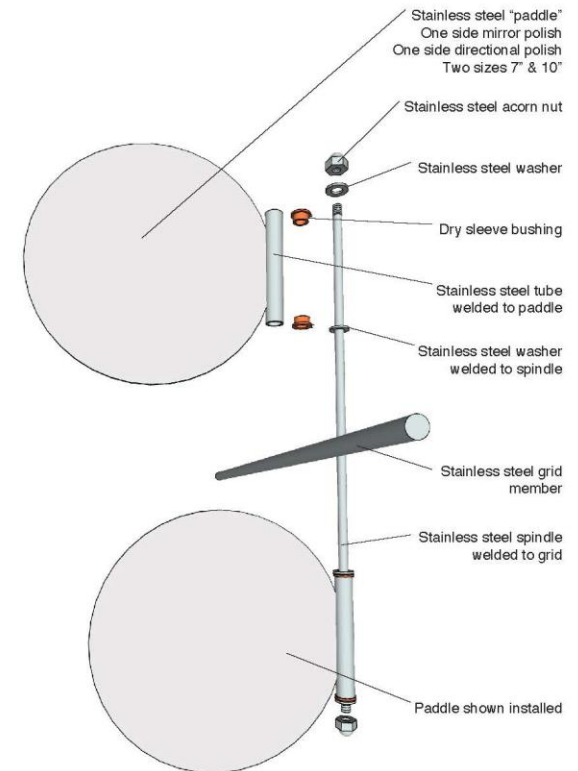
Stainless steel, chosen here primarily for its reflective properties, has the great added benefit of excellent durability. Both brushed and mirror polished finishes are commonly used outdoors without issue, and in this application, objects with these finishes will be well out of reach.

The poles will be finished in the most durable, colour stable, graffiti resistant, two-part epoxy paint produced by PPG. We have used this product on many outdoor sculptures with excellent results.

With exception of the laser cutting of the stainless steel disks, the majority of the fabrication and finishing of “Exhale” will be completed by Studio F Minus in our studio.



This is an example of the mirror polished stainless steel surface. Seen here on “Reflections” a memorial piece by SFM.



TYPICAL WIND “PADDLE” DETAIL

TECHNICAL & MAINTENANCE



“Composition for Wind” is a pastel painted, wind sculpture by SFM. It has been operating without issue since installation over two years ago.

ENGINEERING

Given the large scale and foundation requirements of this art work, SFM will be enlisting the services of Blackwell Engineering, whose structural review and input on our work over the years has resulted in a portfolio of structurally sound, trouble-free outdoor public sculptures.

INSTALLATION

The installation of the artwork will be straightforward. The most site intensive stage will be the excavation for, and pouring of, the two reinforced concrete pile foundations. SFM will coordinate this with Blackwell Engineering and the team early on, such that they are in place before the pouring of the plaza.

The poles and the completed artwork will be transported by flatbed truck to site on purpose-built pallets, craned into place and fastened down with concealed/tamperproof hardware. SFM will coordinate all the necessary equipment and the required safety measures including hording or fencing as necessary.

MAINTENANCE

Having installed sculptures using these materials and methods before, we can confidently say that maintenance of this artwork will be minimal, benefiting from an annual hose down if required.

The mirror polished stainless steel is very robust even in situations where it is directly accessible to the public, often used in place of glass mirror in public washrooms. Here it is far out of reach.

We used the same dry sleeve bearings on our previous project “Composition For Wind” which has been operating non-stop without fail or issue through all kinds of weather since its installation in 2021.

The extremely durable high gloss painted finish on the poles resists dirt build up, corrosion from salt and other snow melt products, UV exposure, and most graffiti mediums can be removed with soap or mild solvents. In the case severe vandalism to either of the poles, resulting in deep gouges or scratches, the epoxy paint finish, unlike powder coat, is easily touched up on site.

