

Laying the Foundation for Tomorrow's Infrastructure

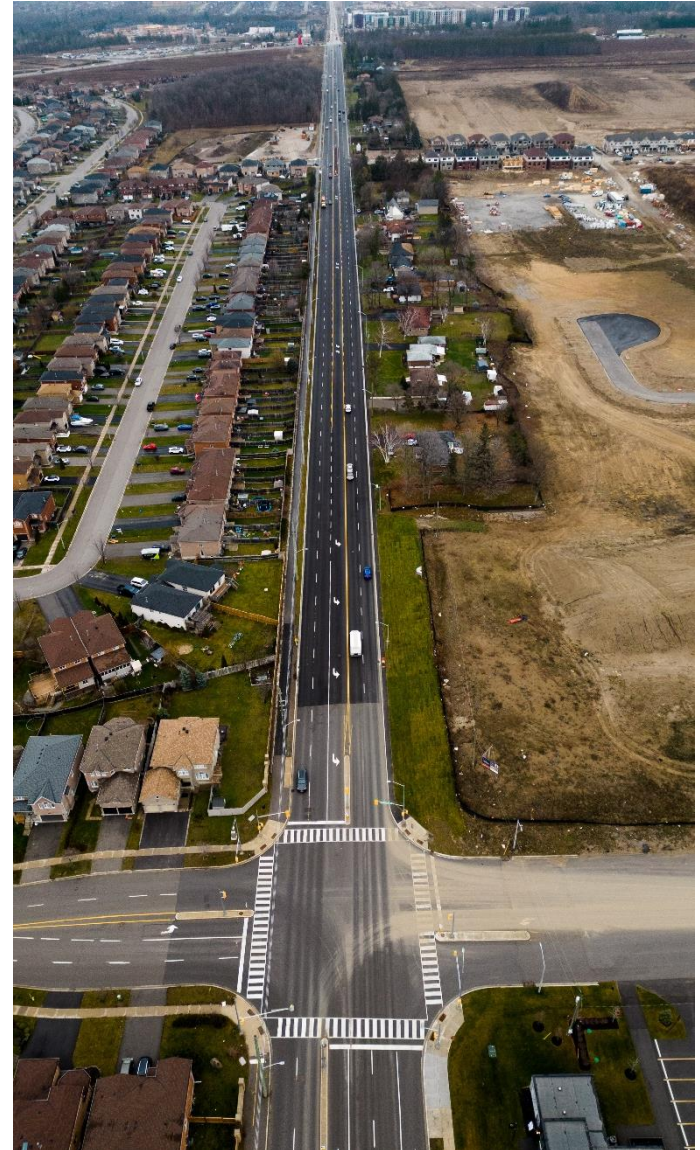
2051 Infrastructure Master Plans



Barrie is Growing

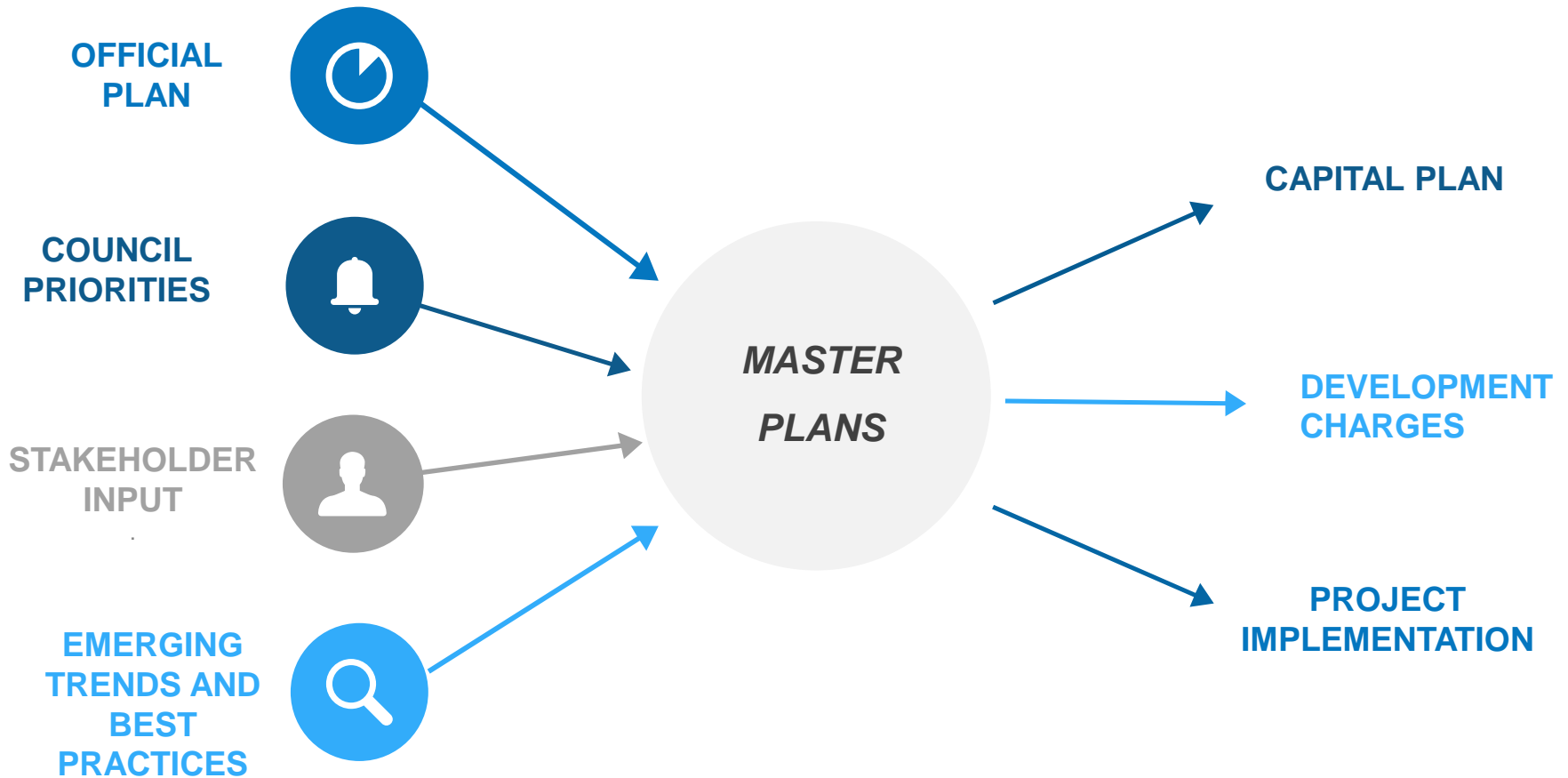
To service growth we need to provide municipal infrastructure:

- ❑ Transportation – Roads, sidewalks, bike lanes, trails.
- ❑ Water – watermains, reservoirs, wells, supply capacity
- ❑ Wastewater – sewers, pump stations, treatment capacity
- ❑ Drainage – ponds, channels, sewers and low impact development (LIDs)



MASTER PLANS

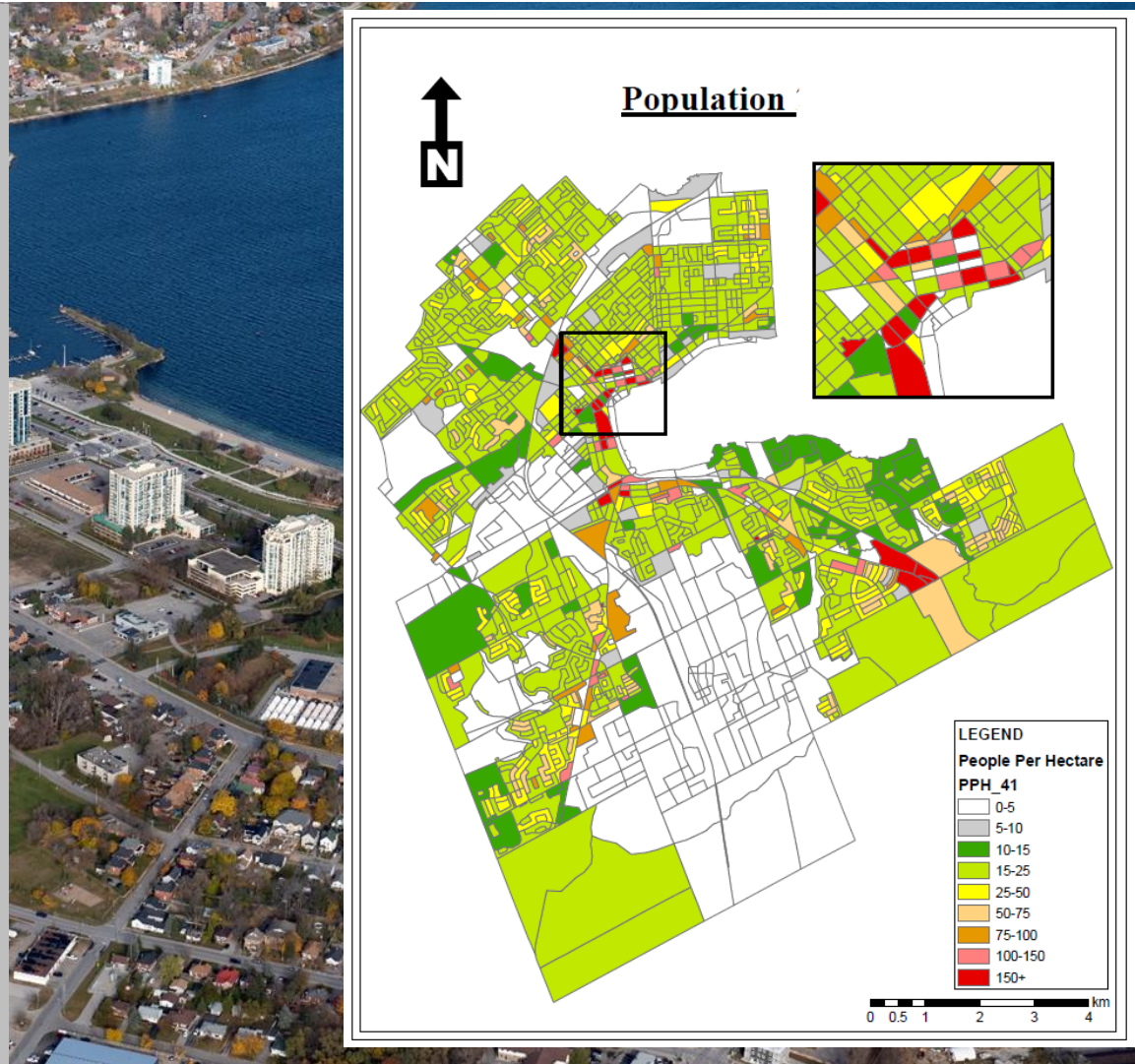
ENSURING ALIGNMENT BETWEEN PLANNING VISION AND ENGINEERING PRINCIPLES



GROWTH PROJECTIONS

 **Population:**
Barrie's growth projections take the City to 298,000 by 2051.

 **Employment:**
To accompany the population growth, the City is expected to grow from 74,000 to 150,000 jobs by 2051.



MASTER PLAN STUDY PROCESS

1

Understand the Existing System

2

Determine the Level of Service

3

Model Growth Scenarios

4

Determine the Required Infrastructure



City's Core Infrastructure



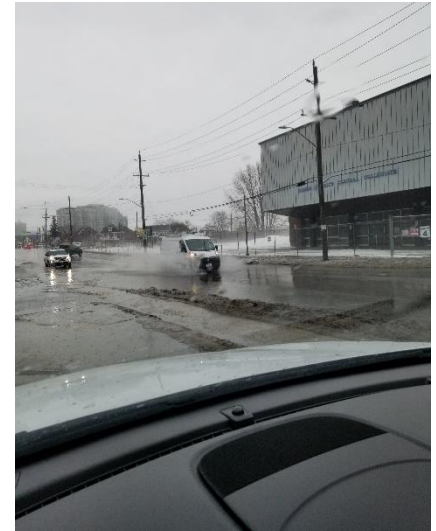
Water



Wastewater



Transportation



Drainage



CONSULTATION AND ENGAGEMENT

ONLINE TOOLS

- Social media, [BuildingBarrie.ca](https://www.buildingbarrie.ca), online surveys, interactive tools and contact lists.

PUBLIC INFORMATION CENTRES

- Five PICs are planned starting in the fall of 2024.

STAKEHOLDER MEETINGS

- Opportunities for stakeholders to have one-on-one meetings with the project teams.

FUTURE COUNCIL PRESENTATIONS

- Staff will frequently update the committee of their progress over the next two years.

CONSULTATION AND ENGAGEMENT

**Emerging Directions
(Q1-Q2 2024)**

WE ARE HERE!

**Vision
(Q3-Q4 2024)**

**Multi-Modal Network
Recommendations
(Q4 2024-Q2 2025)**

**Preferred Scenario and Actions
(Q2-Q4 2025)**

TRANSPORTATION MASTER PLAN

- Online Surveys (first one in next month)
- Pop-ups and visibility at community events.
- Future engagement with Infrastructure and Community Investment Committee.

Master Plans Moving Forward

- **Financial and community planning**
- **Critical infrastructure to support housing and employment**



“Long range planning does not deal with future decisions, but with the future of present decisions.”

Peter F. Drucker

A scenic view of a park with trees, a bench, and a lake under a blue sky. The word "QUESTIONS" is overlaid in a white box in the center of the image.

QUESTIONS