



**Jason Teal, RVH Board of Directors**  
**Janice Skot, RVH President & CEO**

**February 10, 2020**



# Thank you City of Barrie





# RVH's history – 123 years



1897

2019





# Our people – Our patients



474,000  
patient  
visits

15,300  
surgeries

89,000  
emergency  
visits

82,600  
cancer  
visits

\$366 million  
annual  
budget

2,500  
employees

2,000  
births

750  
volunteers

440  
physicians



Royal Victoria  
Regional Health Centre

2018-2019





# New regional programs



Child and youth mental health program has cared for 2,200 young people



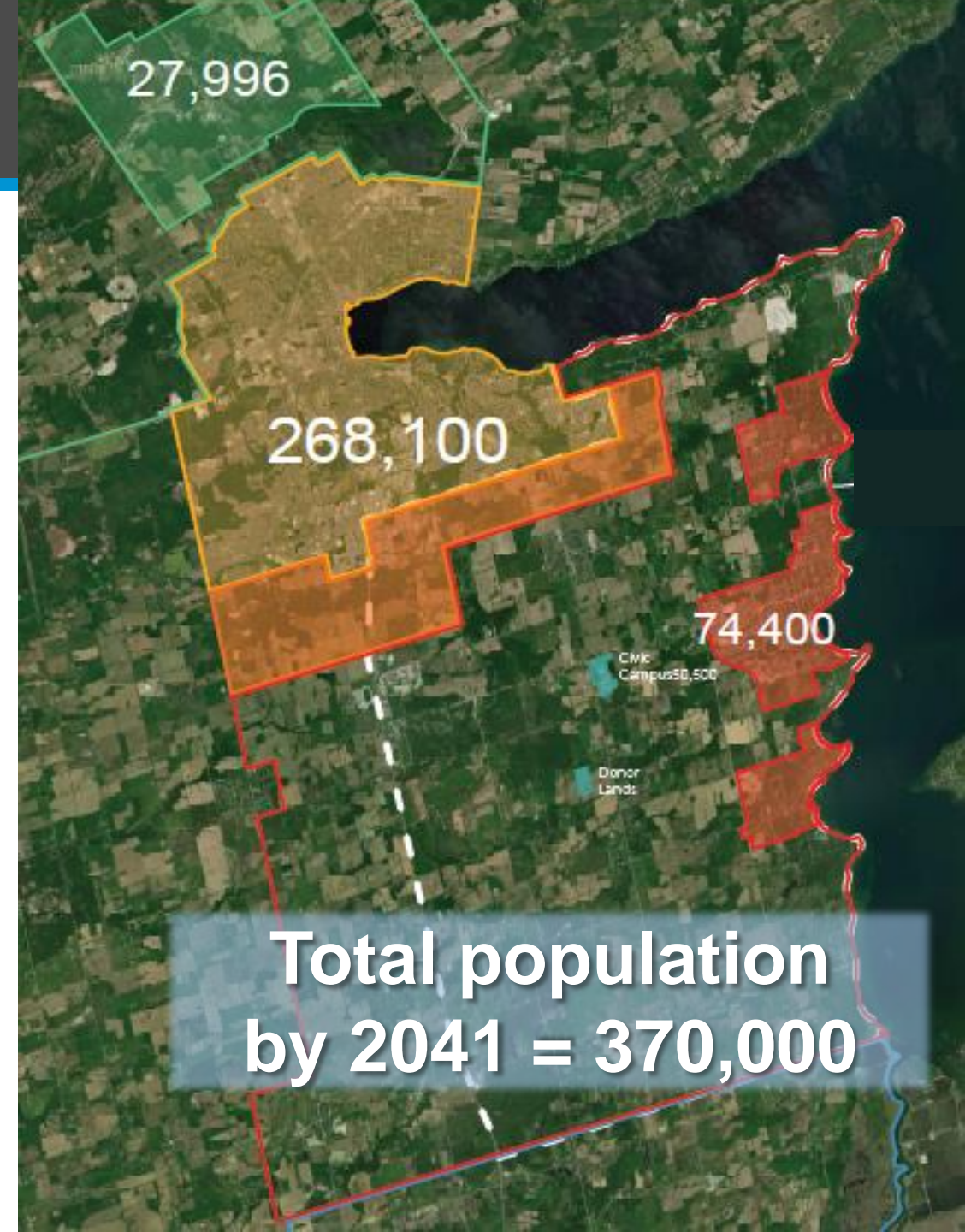
Regional advanced heart program has performed over 3,400 procedures



# Population growth

**Population of Barrie, Springwater and south Simcoe County will almost double by 2041.**

**The total population will equal London, ON.**





# Aging population



**Within 25 years, Simcoe County will have 107,000+ more seniors representing 27% of the population**



# Population health



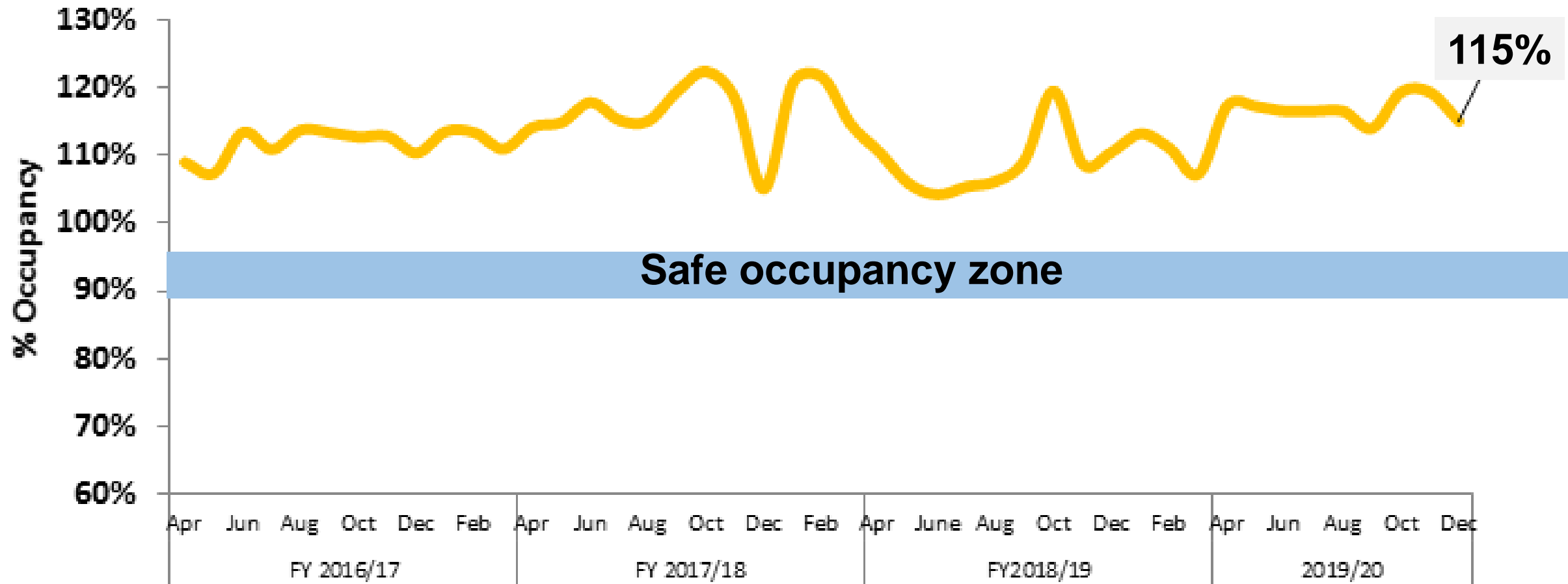
- **North Simcoe Muskoka residents have higher risk factors than rest of Ontario**
- **45% of North Simcoe Muskoka residents have 1 chronic disease**
- **20% have multiple chronic diseases**



# Hallway medicine



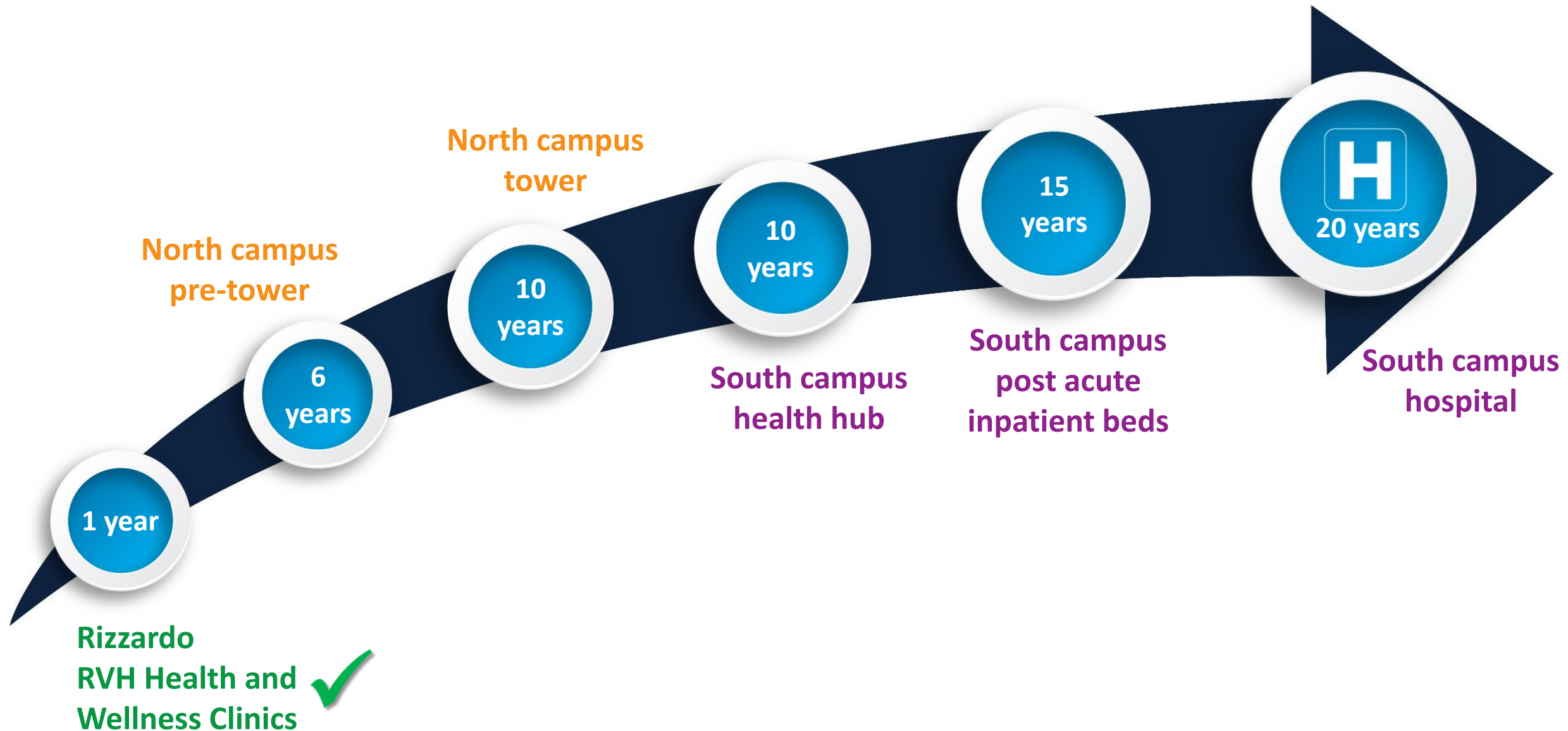
## Medicine bed occupancy



**In 2019, 3,000+ patients received care in hallways, temporary surge units, Emergency Department, makeshift care spaces & unbudgeted 'unconventional' spaces**

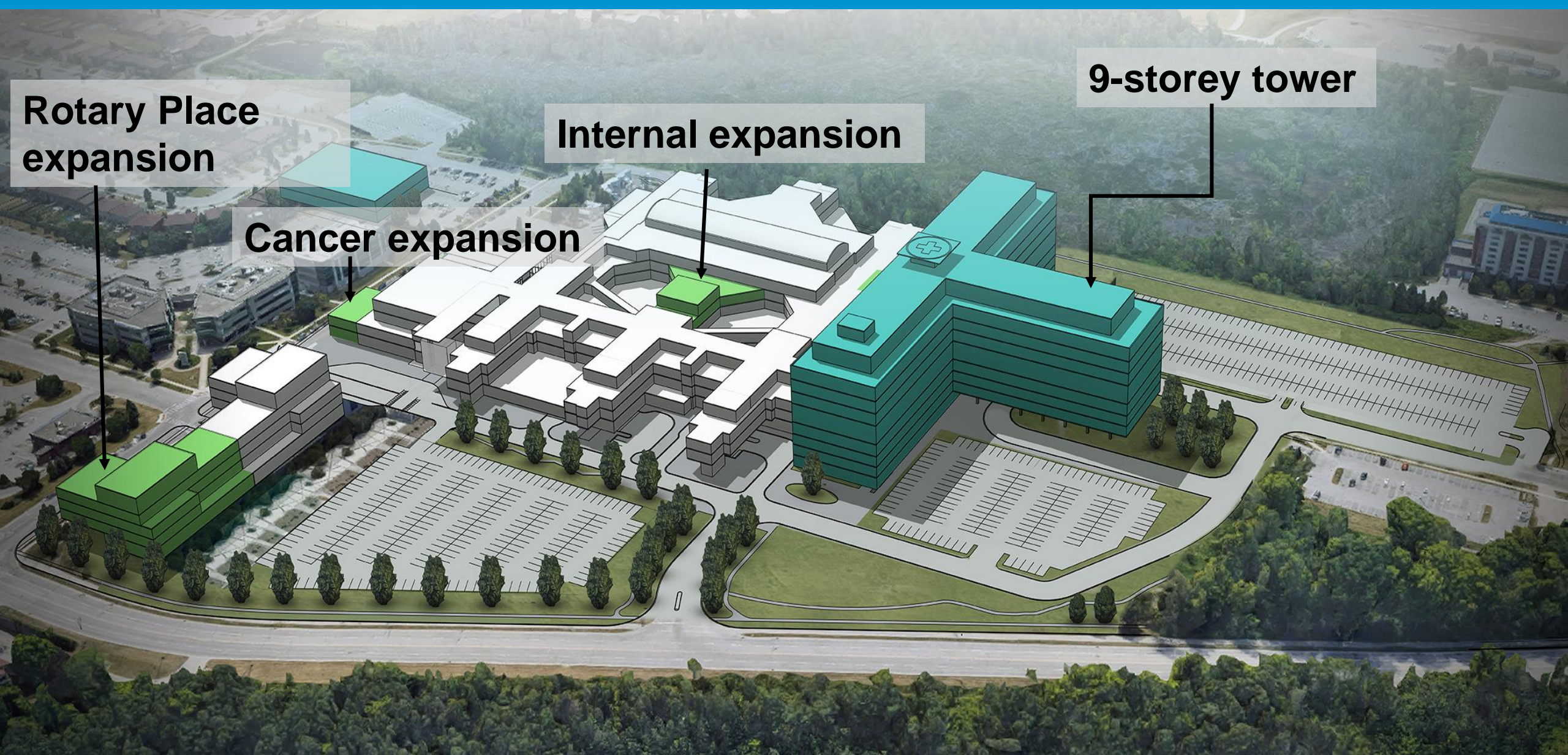


# Two campus, integrated model



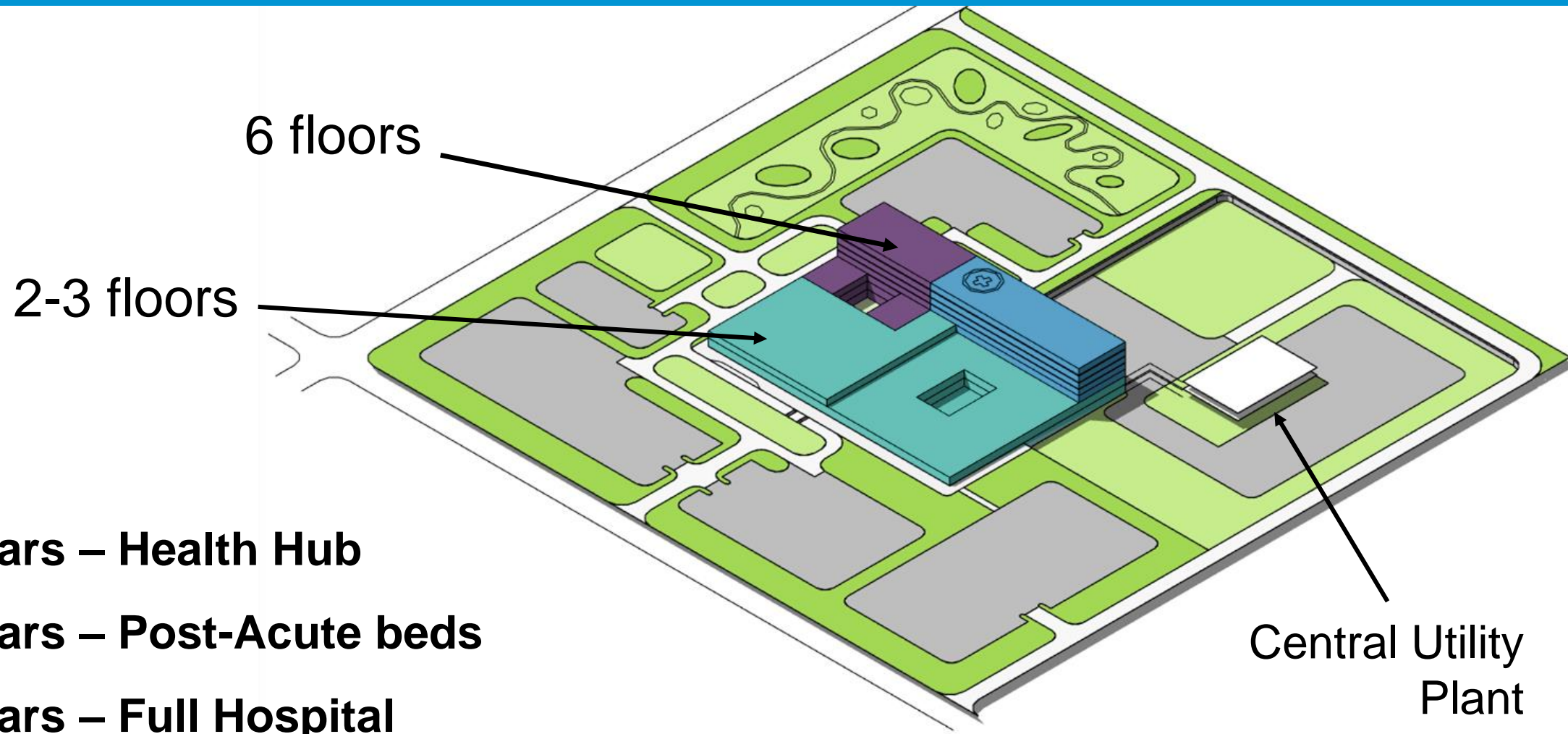


# North campus





# South campus

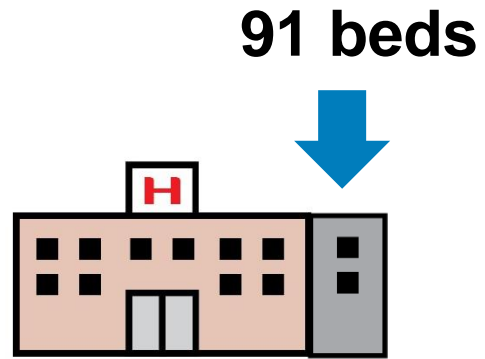




# North campus and south campus beds

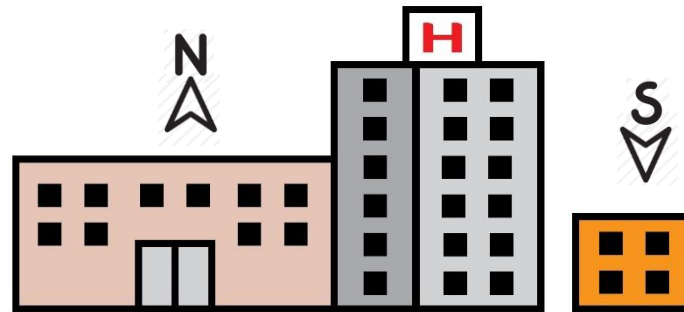


2026



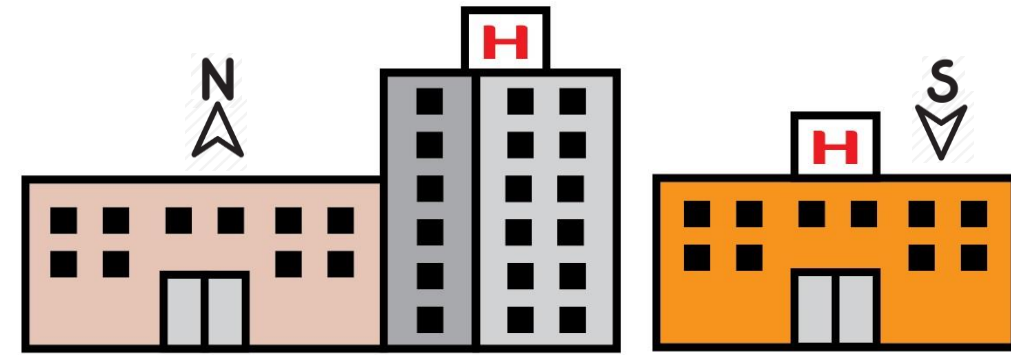
472 beds

2030



626 beds

2040



943 beds



# South campus site search area



**Zone 1:** Highway 400 corridor

**Zone 2:** South Barrie / North Stroud

**Zone 3:** South Stroud / Yonge corridor

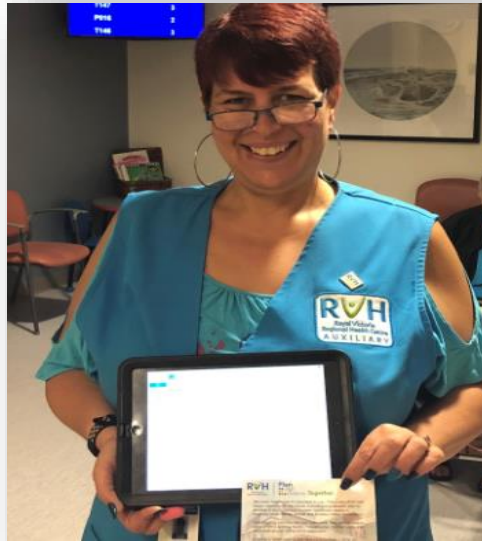
**Zone 4:** South Alcona

**Zone 5:** 6th line and Yonge St.





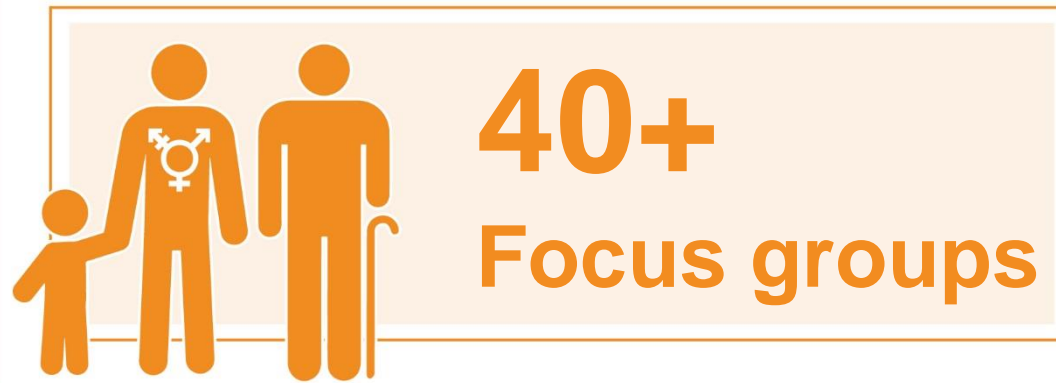
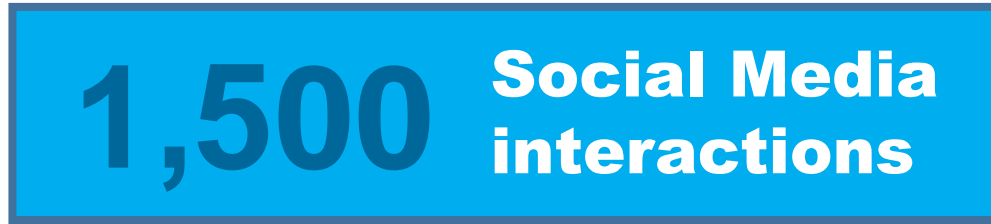
# Community engagement







Plan  
our  
future. **Together.**

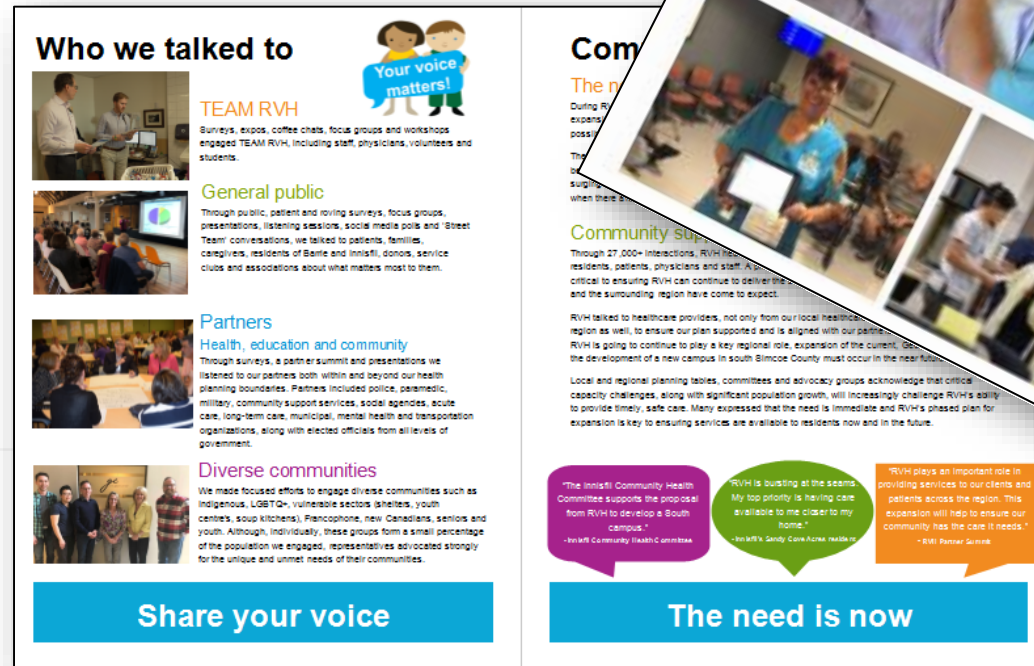


# Community engagement report



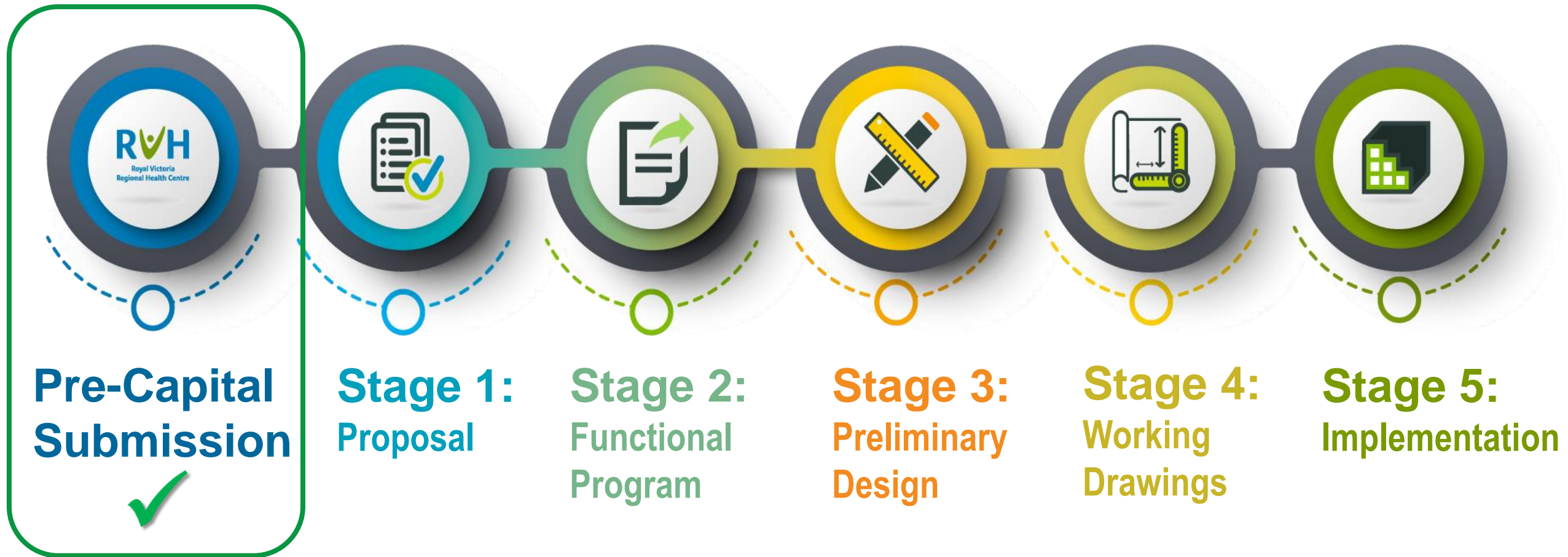
## 16 page report summarizes:

- Consultation process
- Stakeholders engaged
- Feedback themes
- Comments
- Consultation scope





# Provincial capital planning process



# Annual economic impact



**\$161 million** spin-off in 2018-'19



**\$194 million** spin-off in 2027-'28



**\$259 million** spin-off in 2037-'38





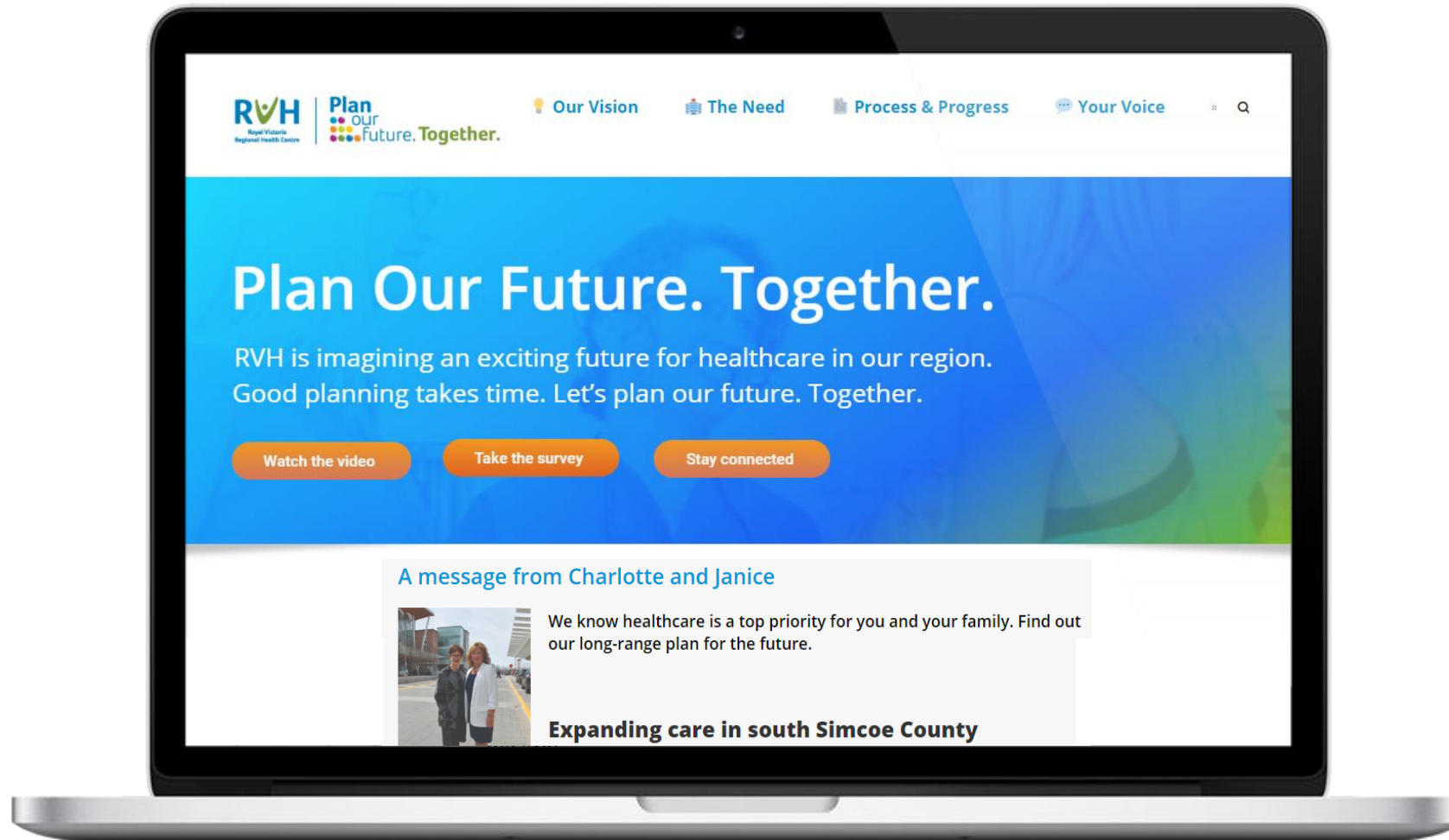
# Construction economic impact



- **2012 expansion required 1.7 million person hours of construction work**
- **80% of the trades people were local – as were many of the suppliers**









# Questions?

