



# PUBLIC MEETING

June 8th, 2020



BARRIE LAKESHORE DEVELOPMENTS

-

51, 53, 55 & 75 BRADFORD STREET AND 20 CHECKLEY STREET, BARRIE, ONTARIO

TURNER  
FLEISCHER



# Context Map





# Downtown Height Map



The proposed development reflects the growing trend of intensification along Barrie Waterfront and within the City Centre to support the intent of the Provincial Policy Statements and Growth Plan.

The transitional heights along lakeshore to Bradford Streets will bring in unique community uses, animated streetscapes, and active frontages to the Barrie community and Barrie skyline.



# Barrie Central Development - View Looking South Along Bradford Street







**PROPOSED:  
BARRIE LAKESHORE DEVELOPMENTS**



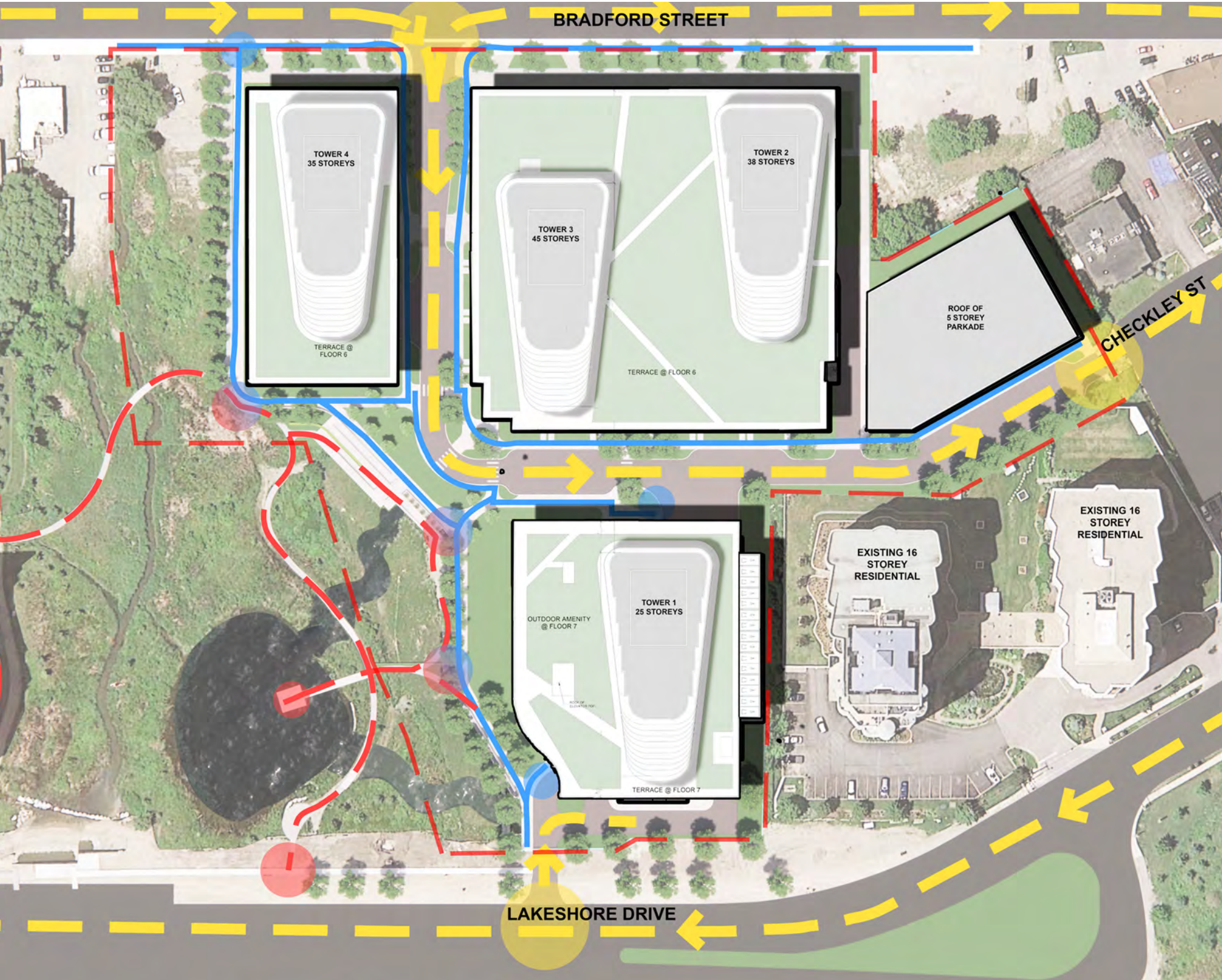
# Site Plan / Roof Plan



The distribution of uses and densities is inspired by its relation to the existing context. The conservation of natural features and neighboring context in relation to the design have been thoroughly examined to enhance the open space, daylighting and views, of the development.



# Site Plan / Pedestrian Access

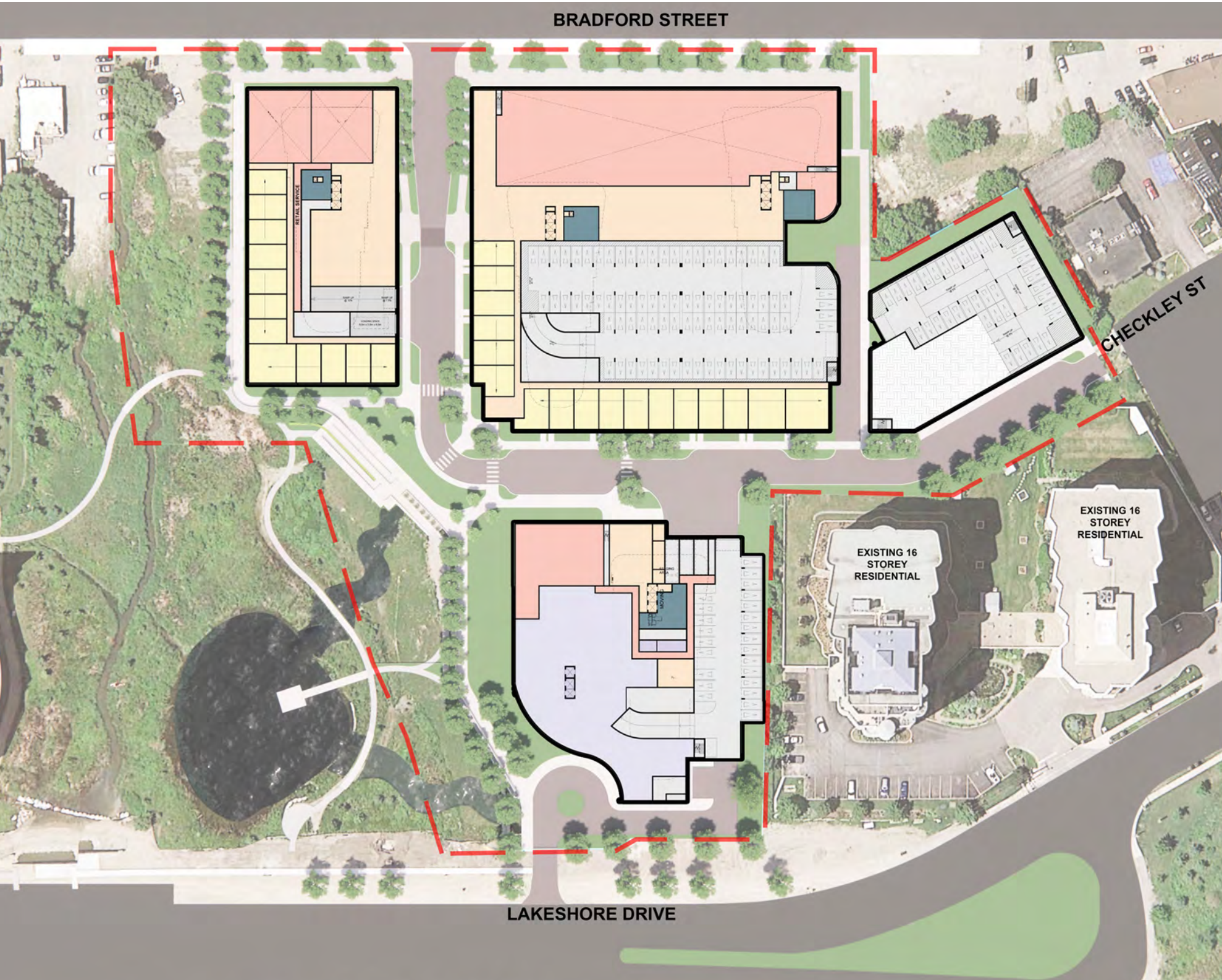


**Legend**

- Green Space Access
- Pedestrian Access
- Roadway Access



# Ground Floor Plan

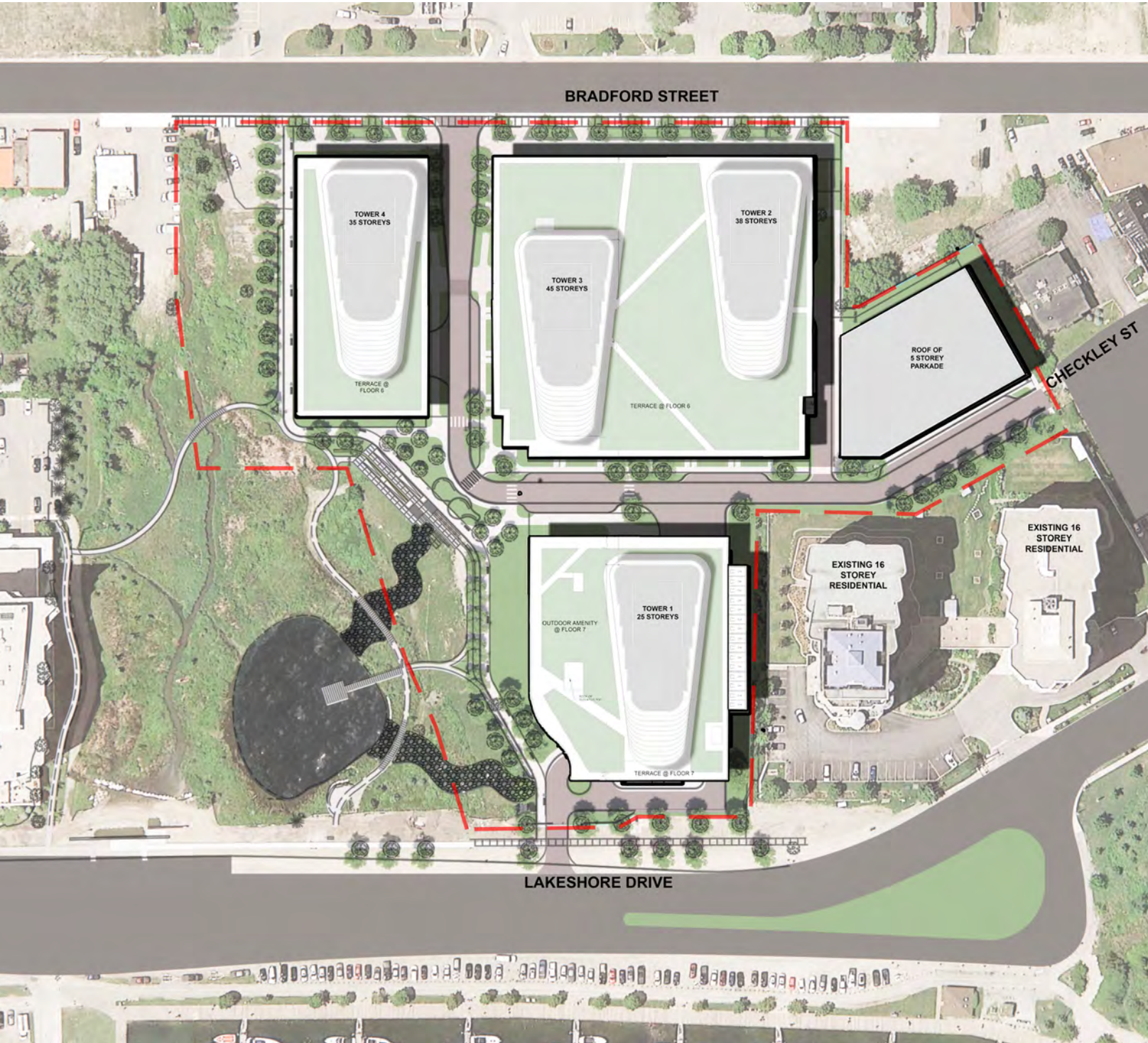


**Legend**

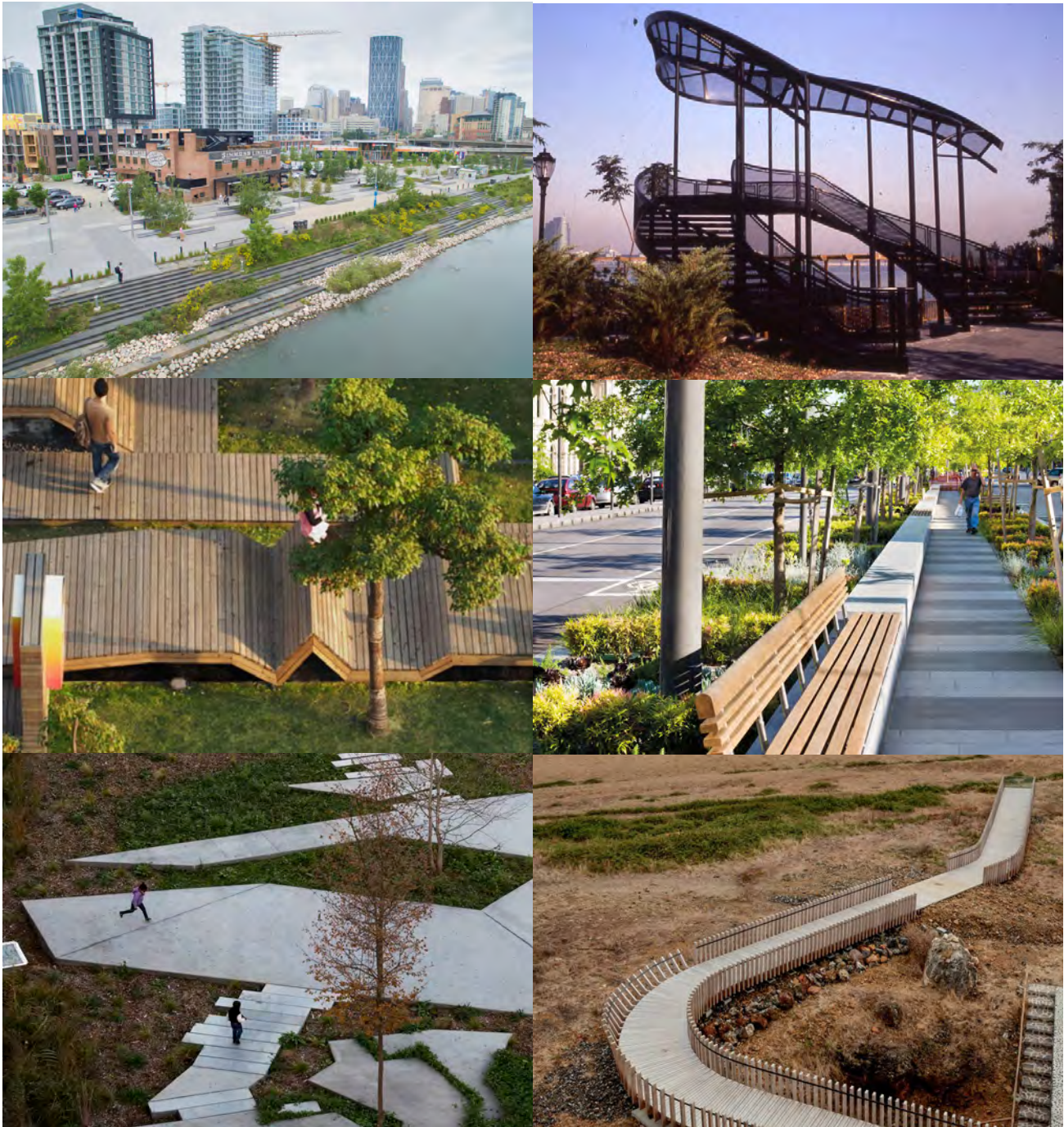
- Retail
- Hotel
- Residential



# Landscape Plan



## PRECEDENTS





# Perspective View Looking West To Park



KEY PLAN





# Perspective View Looking North West from Proposed Green Space



KEY PLAN

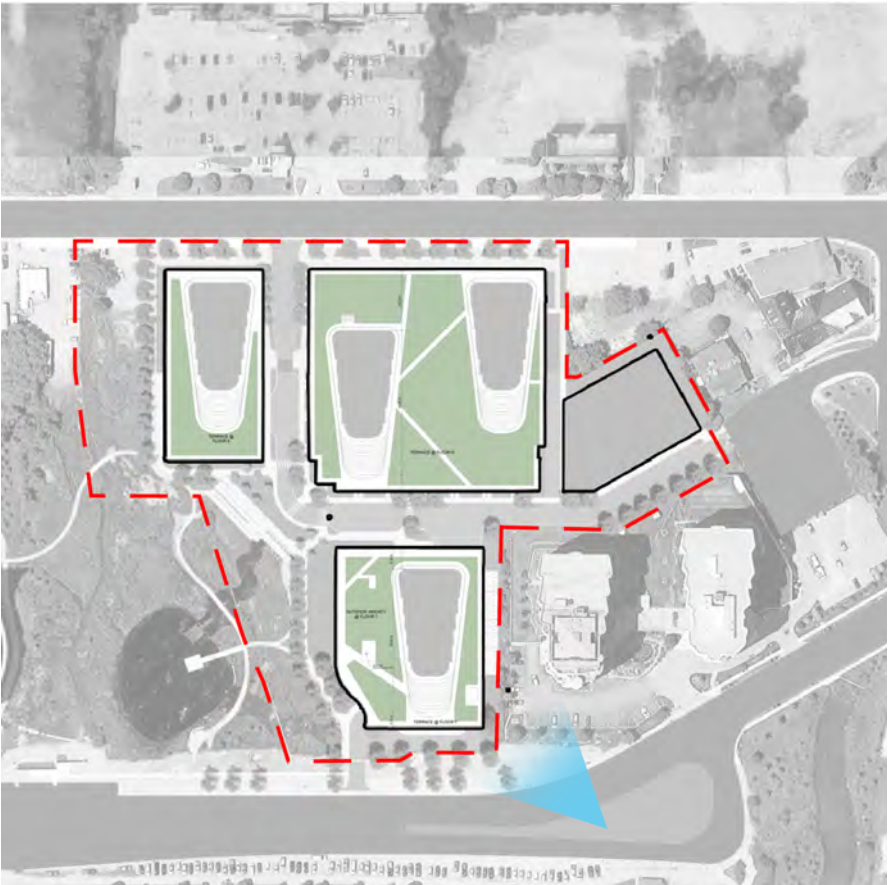




# Perspective View Looking South West from Lakeshore Drive



KEY PLAN





# Perspective View Looking North on Proposed Interior Road



KEY PLAN





# Perspective View Looking North West on Proposed Interior Road



KEY PLAN





# Perspective View Looking North East Along Bradford Street



KEY PLAN







June 8th 2020

BARRIE LAKESHORE DEVELOPMENTS

-

51, 53, 55 & 75 BRADFORD STREET AND 20 CHECKLEY STREET, BARRIE, ONTARIO

TURNER  
FLEISCHER